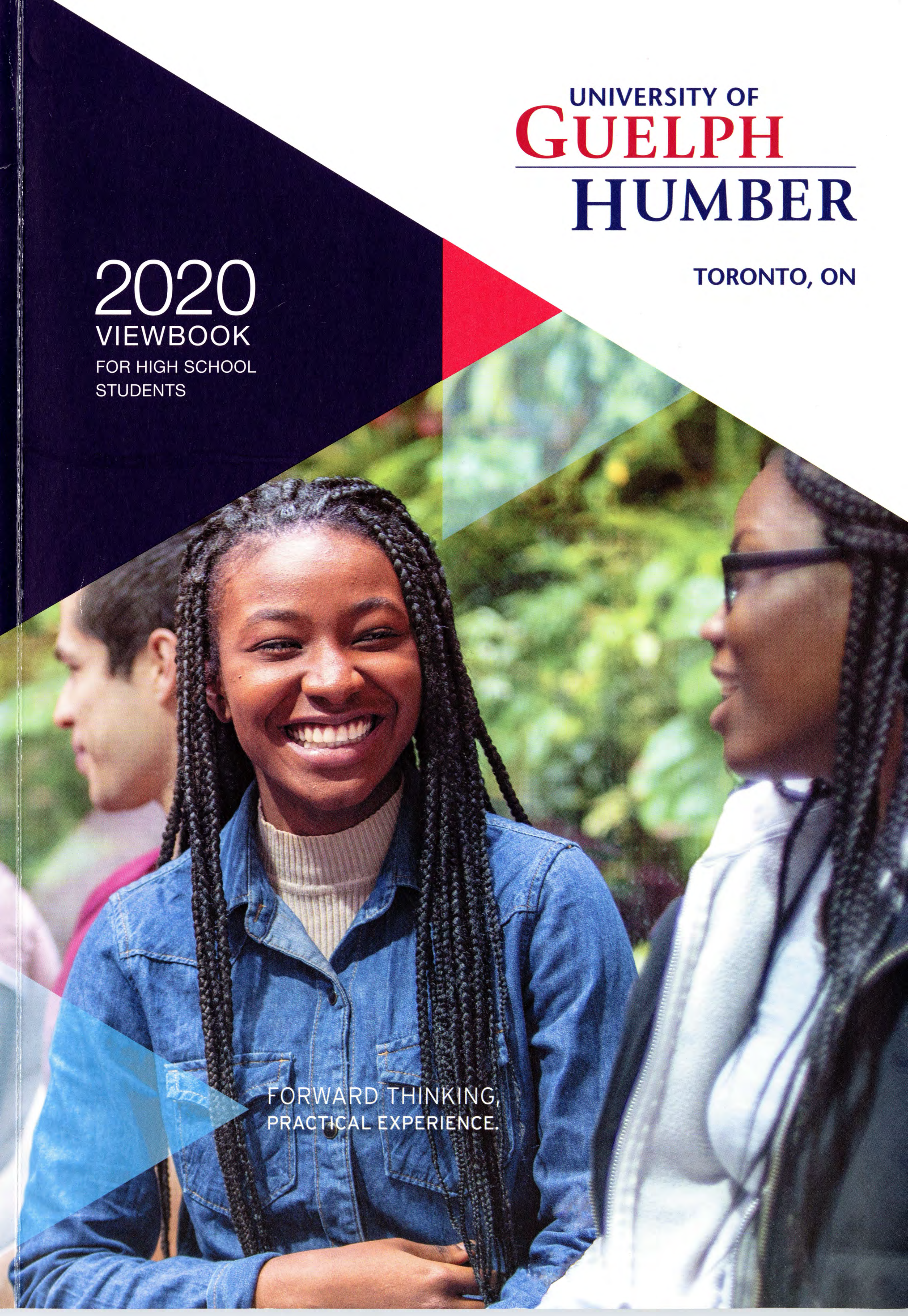


UNIVERSITY OF  
**GUELPH**  
HUMBER


TORONTO, ON

2020  
VIEWBOOK  
FOR HIGH SCHOOL  
STUDENTS

FORWARD THINKING,  
PRACTICAL EXPERIENCE.







## Land Acknowledgement

The University of Guelph-Humber and Humber College are located within the traditional and treaty lands of the Mississaugas of the Credit. Known as Adoobiigok, the “Place of the Black Alders” in the Mississauga language, the region is uniquely situated along the Humber River Watershed, which historically provided an integral connection for Anishinaabe, Haudenosaunee, and Wendat peoples between the Ontario lakeshore and the Lake Simcoe/Georgian Bay regions. Now home to people of numerous nations, Adoobiigok continues to provide a vital source of interconnection for all. We acknowledge and honour the land we are walking on, the moccasin tracks of our ancestors and the footprints of future generations.





## **The University of Guelph-Humber**

is a collaboration between the University of Guelph and Humber College Institute of Technology & Advanced Learning (Humber). Our programs draw from the expertise and knowledge of both renowned institutions.

**Focused programs** + **Workplace experience**

Program plans are focused, so you take courses that provide academic theory and practical learning, with very few electives.

Every honours degree has required work placement hours that are built into the regular course of study.



UNIVERSITY OF  
**GUELPH**  
HUMBER

TORONTO, ON

FORWARD THINKING,  
PRACTICAL EXPERIENCE.

more  
in

4

years

place  
ence



Industry  
connections



Degree +  
diploma!

degree program  
work placement  
built into your  
of study.

Our professors/instructors keep  
one foot in the classroom and one  
in their field to offer you current  
perspectives and knowledge.

Get practical experience and earn  
both a university honours degree and  
diploma in four years of full-time study  
at the **University of Guelph-Humber**.





## INSIDE

- 2 Focused Programs
- 22 Student Experience
- 32 Scholarships & Tuition
- 38 Application & Admission Requirements
- 47 Tours & Events

*“There’s a strong community here that you can be a part of. Your success will be a result of your relationships, academic and hands-on learning, hard work, and many great memories.”*



> Dr. John Walsh  
Vice-Provost

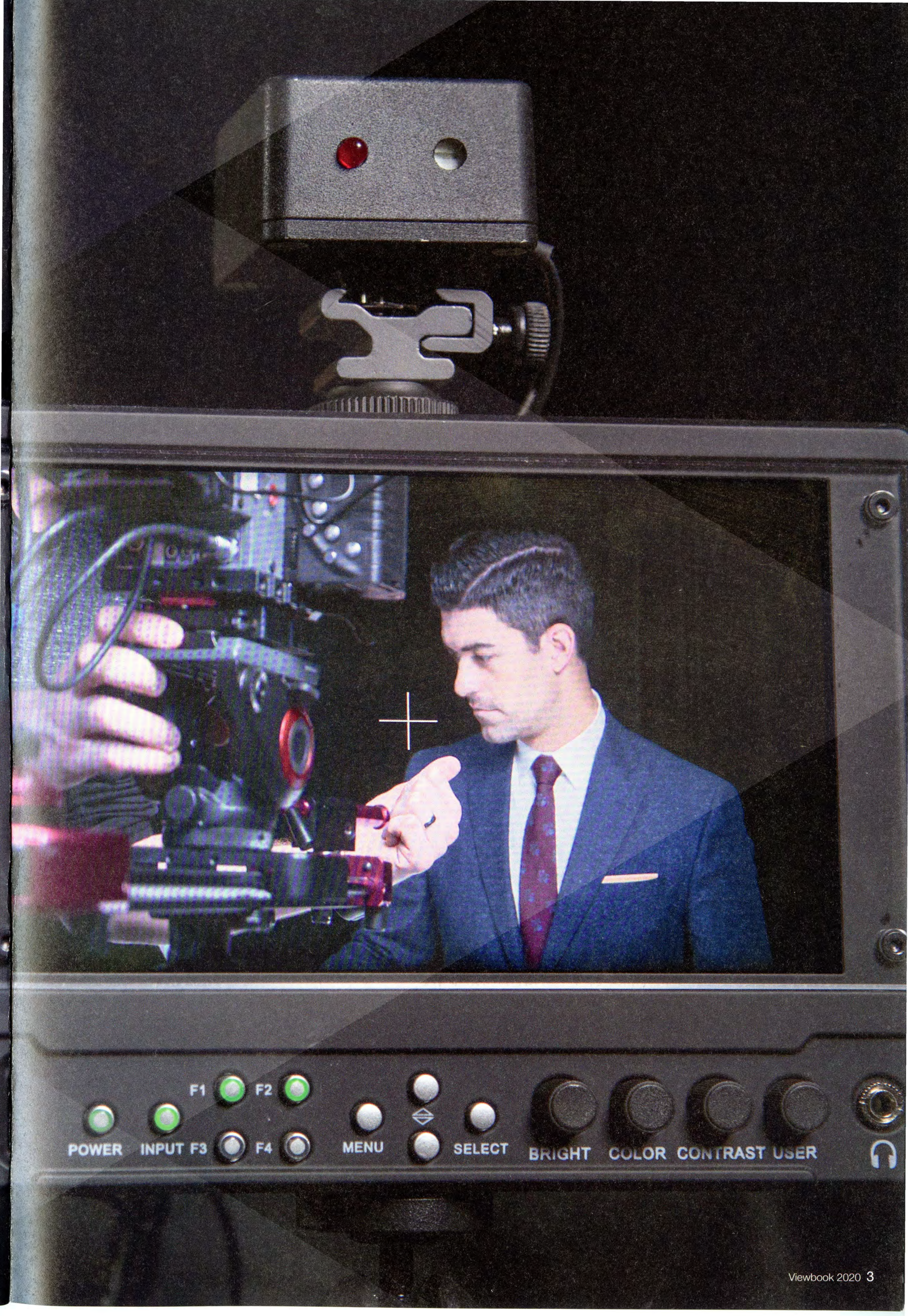


# Focused Programs

more

- + theory and practice
- + credentials
- + courses targeted to your area of study
- + interaction with professors and classmates







Gianluca T.  
Placement with  
Blaney McMurtry LLP

Clare P.  
Placement with Corus  
Entertainment

more

opportunity

### Workplace experience

You will graduate with workplace experience that will guide your career decisions. Every honours degree program has required work placement hours that are built into your regular course of study. It was important 17 years ago when we began, and it's even more important today.

You'll be supported by your Field Placement Coordinator to help with your success.



**100 to 850 hours  
of placement**

### Current expert knowledge

Our professors/instructors keep one foot in the classroom and one in their field to offer you current perspectives and knowledge and connect you to professionals. Examples include:

- > Glenn Barenthin, retired Detective Sergeant
- > Lindsay Barton, Psychotherapist
- > Stephanie Matteis, Digital Journalist
- > Danielle Pomeroy, Social Worker
- > Fabian Rayne, Registered Kinesiologist and Certified Exercise Physiologist





Naba S.  
*Placement with SickKids*

Elyse M.  
*Placement with Adidas*

Michelle V.  
*Placement with Universal Music Canada*

## Research as an undergraduate

If research interests you, get to know the many research opportunities inside and outside of class. Get paid and do research as a Research Assistant with instructors funded by the University's Research Grant Fund. Visit [guelphhumber.ca/futurestudents](http://guelphhumber.ca/futurestudents) to see a list of past research projects.

- > Apply classroom knowledge
- > Develop skills in conducting experiments, research and data collection
- > Contribute to research publications

## Get noticed

Make an impact and get hands-on experience through award competitions and attending conferences. Our alumni will tell you, it's easy to get involved at UofGH, and being involved gets you out in the field meeting professionals, using your skills, honing your talents and earning recognition in the field.

*"My placement was valuable because it gave me the opportunity for real-world experiences. I was able to apply my program knowledge to the organization and network with individuals within the organization, building stronger industry connections."*

> Priya R., Placement with Ignite



**65 to 250**

students are your program cohort — a very small select group!



# Business

Acquire your biggest asset: a firm foundation in global business practices that gives you a competitive advantage.

more  
in

# 4

Earn 2 credentials in 4 years.

**HONOURS BACHELOR  
OF BUSINESS ADMINISTRATION**



**DIPLOMA IN BUSINESS  
ADMINISTRATION**



IN 2018–19, OUR BUSINESS STUDENTS  
EARNED **42 TOP-THREE FINISHES**  
AT EXTERNAL COMPETITIONS!

## Focused academic program

Learn how to market goods, fund a business, lead others, work ethically, think big and collaborate, but above all, focus on your career objectives. Get introduced to a range of different business areas and discover where your interests lie. Our program combines an in-depth knowledge of the business world with the hands-on skills necessary to lead and succeed.

Choose to focus your studies in one of six areas of emphasis or select a variety of courses reflecting a range of interests.

## Areas of emphasis

**Accounting:** Complete the courses you need to pursue your CPA when you graduate.

**Finance:** Learn about banking, insurance, capital projects, investing and portfolio management.

**International Business:** Explore global currencies, trade and industry practices of Asia Pacific, Europe and Latin America.

**Management:** Learn the challenges of running various types of enterprises including for-profit, not-for-profit, small and large businesses.

**Marketing:** Explore how product, price, place and promotion meet consumer needs and achieve company objectives.

**Small Business Management and Entrepreneurship:** Study key strategies for starting and maintaining a successful new venture.

## First-year courses

- > Accounting I
- > Accounting II
- > Business Communications
- > Business Information Systems
- > Business Law
- > Business Statistics
- > Introduction to Organizational Behaviour
- > Macroeconomics
- > Marketing
- > Microeconomics

## Experiential learning

Up to **300 hours** (minimum 100 hours) of workplace experience tailored to your goals.

Past placements include:

- > Arrive Alive Drive Sober
- > BMO Financial Group
- > CIBC
- > EDealer
- > IBM
- > LCBO
- > March of Dimes
- > Metroland Media
- > Metrolinx
- > Remax
- > Rogers Communications
- > Scotiabank
- > St. Joseph Communications
- > Sun Life Financial
- > TD Canada Trust
- > Toronto Hydro
- > Toronto International Film Festival
- > Toronto Transit Commission

## Opportunities

### Practise your business savvy

In our Business Management Simulation course, you run a virtual business over one semester—making business decisions and managing the results.

In Business Analytics, learn the core techniques of data analysis, including data mining, pattern detection, graphic visualization and modelling.

Work as a team in the Event Management courses to develop, implement and manage a special event in our art gallery.

### Put your skills to the test

Join our award-winning teams to represent the University in business competitions against other postsecondary institutions. Solve complex problems, earn valuable experience and network with top national and international companies.





Dilshan J.

Graduated 2019

Currently working as  
a Staff Accountant,  
Ernst & Young (EY)



Senior START Leader

Learning Support Peer

VP of Activities & President,  
Guelph-Humber Accounting Council

Delegate & Mentor, DECA UofGH

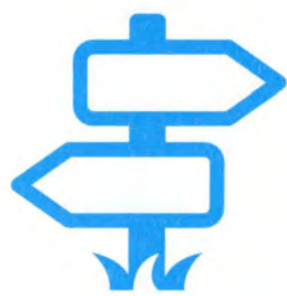
Founder, World Autism Awareness  
Day at UofGH

Student Senator

Business Academic Program  
Representative, Ignite

University of Guelph-Humber  
Student Leadership Scholarships

Michael Nightingale  
Community  
Enrichment Award



## Sample careers and further education

- > Account Executive
- > Accountant (CPA)
- > Brand Manager
- > Data Analyst
- > Financial Analyst
- > Financial Planner
- > Global Logistics Coordinator
- > International Accounts Manager
- > Investment Advisor
- > Management Consultant
- > Manager, Planning Analysis
- > Marketing Coordinator
- > Operations Manager
- > Project Manager
- > Social Media Strategist
- > Tax Specialist
- > Master of Business Administration
- > Law School
- > Master of Accountancy
- > Master of Professional Communications
- > Master of Science in Management
- > Master of Science in Marketing
- > Master of Finance

Note: Some careers and entry into further education may require additional study.

*“My placement at TIFF helped me apply all the knowledge I learned from my classes to actual practice in accounting. Not only did I gain invaluable skills in the field, but I fully experienced what it’s like to work at one of the biggest film festivals in the world. This combined my interest in pursuing a career in accounting and my passion for movies!”*



# Early Childhood Studies

Learn how to support children individually, as well as work with their families, schools and the community.

more  
in  
**4**

Earn 2 credentials in 4 years.

**HONOURS BACHELOR OF APPLIED SCIENCE**



**DIPLOMA IN EARLY CHILDHOOD EDUCATION**



LEARN TO APPLY INCLUSIVE PRACTICES TO MEET THE DIVERSE NEEDS OF CHILDREN, INCLUDING INFANT AND CHILD MENTAL HEALTH AND TRAUMA.

## Focused academic program

Our program focuses on the physical, social, emotional and cognitive development of young children from birth to 12 years and their interaction with the world around them.

Your first year introduces you to the domains of childhood development and theories and foundations of early childhood. In your second year, you learn the basics of human anatomy and physiology; how to create curriculum; observation and research skills; dynamics of relationships; and how biases impact our interactions with children and families.

In your third and fourth years, you learn how to develop curriculum in educational and therapeutic settings. Curriculum includes children with special needs, infant and children's mental health, therapeutic play and interprofessional collaboration. You will learn to assess children's learning; support and educate children in a meaningful way; understand how to create interventions; and know how to work with children in a variety of settings.

You will take a journey of self-awareness, find your own voice and develop a comprehensive set of abilities to deal with diverse circumstances in an empathetic manner.

## First-year courses

- > Children & Play
- > Early & Middle Childhood Development
- > Field Practicum 1
- > Foundations in Early Childhood
- > Health & Safety in Early Childhood Settings
- > Infant & Toddler Development
- > Introductory Psychology: Dynamics
- > Introductory Psychology: Principles
- > Principles of Sociology
- > University Writing Skills for Early Childhood Studies

## Experiential learning

- > Complete **800 hours** of workplace experience
- > Job shadowing will help introduce you to early learning and care settings (Year 1, Winter)
- > Experience an early learning and care setting (Year 2, Winter)

- > Participate in a placement related to inclusion and special needs (Year 3, Fall)
- > Gain knowledge in community-based organizations (Year 3, Winter)
- > Select a year-long setting tailored to your career aspirations and knowledge base (Year 4, Fall/Winter)

Past practicum placements include:

- > Children's mental health centres
- > Community-based/advocacy organizations
- > EarlyON centres
- > Hospital child life units
- > Inclusive learning centres
- > Primary school classrooms
- > Therapeutic environments

*Note: You will be required to complete a Vulnerable Sector Screening, documentation of immunization and a First Aid/CPR certificate prior to placement.*

## Opportunities

### Learn through play

Borrow from our extensive collection of educational and therapeutic materials and toys in the Early Childhood Studies Resource Room to enhance your placements.

### Engage in your learning environment

See first-hand how learning environments can support diversity and inclusion for children with a range of abilities when you use our interactive classroom. It facilitates and enriches learning with Smart Boards, whiteboard walls, specialized seating (pods) and desks, wiggle chairs and integrated technology.

### Community outreach and leadership

Take the opportunity to volunteer to support important social causes or community projects with your peers. Students have served meals to families at Ronald McDonald House, raised funds for Holland Bloorview Kids Rehabilitation Hospital and participated in awareness campaigns for initiatives such as World Down Syndrome Day. In spring 2019, the ECS program launched the Bloom Gala to recognize professional excellence in the field of early childhood studies; nominations are student driven.





Keanna G.

Graduated 2018

Pursuing a Master of Science in Child Life and Pediatric Psychosocial Care

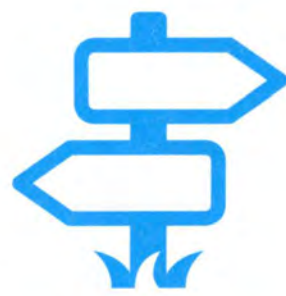


START Leader

Entrance Scholarship

Merit Scholarships

*“My placement gave me a path to success. I made connections with professionals, which helped when applying to my highly competitive graduate program. I developed a competitive resumé due to my experiences in a variety of settings and acquired unique skills necessary for my success within my grad program.”*



### Sample careers and further education

- > Registered Early Childhood Educator
- > Play Therapist
- > Early Intervention Consultant
- > Speech Pathologist
- > Special Needs Resource Consultant
- > Child Care Supervisor/Director/Owner
- > Intensive Behaviour Therapist
- > Children’s Rights Advocate
- > Special Needs Worker
- > Family Support Supervisor
- > Teacher
- > Research & Policy Analyst
- > Master of Education
- > Master of Science in Occupational Therapy
- > Master of Science in Child Life and Pediatric Psychosocial Care
- > Master of Social Work
- > Master of Arts in Child Study & Education
- > Nursing School

*Note: Some careers and entry into further education may require additional study.*





# Family and Community Social Services

more  
in  
**4**

Earn 2 credentials in 4 years.

**HONOURS BACHELOR  
OF APPLIED SCIENCE**



**SOCIAL SERVICE  
WORKER DIPLOMA**

Effect change and make a difference in society in a very meaningful way.



STUDENTS RAVE ABOUT **OUR INSTRUCTORS** WHO WORK AS EXECUTIVE DIRECTORS, CLINICAL SUPERVISORS AND MORE.

## Focused academic program

Explore current social issues and understand the challenges faced by vulnerable populations so you can learn how to deliver impactful services, such as counselling, mediation and crisis intervention.

Courses in your first year focus on understanding human behaviour and issues related to individuals, families and groups. In your second year, you will engage in theoretical and practical studies in counselling, ethical and professional issues, and working with various vulnerable populations.

In your upper years, you will work with diverse groups and learn theory and techniques in family therapy, case management and social work practice. Graduate with important skills in social work—how to listen, how to support someone, understanding boundaries, professionalism, cultural awareness, compassion, global citizenship and self-care.

## First-year courses

- > Child & Adolescent Development
- > Couple & Family Dynamics
- > English I: Reading & Writing Effectively
- > General Elective
- > Interpersonal Communication Skills
- > Introductory Psychology: Dynamics or Principles of Sociology
- > Issues in Advocacy & Social Justice
- > Social Issues & Social Environments
- > Social Work in Canada
- > The Political Process & Social Work

## Experiential learning

Starting in your second year, you will complete more than **850 hours** of supervised workplace experience.

- > Initial exposure to a variety of social issues and the day-to-day operations within a community organization (Year 2, Winter)

- > Continue to learn about agency functions and begin to interact with agency staff, volunteers, clients and the community (Year 3, Fall/Winter)
- > Provide direct client services through individual, family, group and/or community interventions (Year 4, Fall/Winter)

Past placements include:

- > Addiction centres
- > Children's mental health centres
- > Correctional facilities
- > Crisis counselling lines
- > Employment centres
- > Probation and parole centres
- > School settings
- > Seniors' residences
- > Settlement agencies
- > Youth drop-in centres

*Note: You will be required to complete a Vulnerable Sector Screening prior to each placement.*

## Opportunities

### Experiential learning lab

Build strong clinical skills that exceed the industry standard for undergraduate education. Learn basic communication competencies to more in-depth therapeutic interventions for individual, group and family counselling. You will practise interviewing, counselling, crisis intervention, mediation and conflict resolution. By recording the sessions, you can analyze your techniques to help you learn to communicate and support people more effectively.

### Participate in professional development

The See | Change Symposium is an annual student-run event that gives you the opportunity to learn from invited practitioners and researchers in your field.

### Get registered

Apply to be registered with the Ontario College of Social Workers and Social Service Workers as a Social Service Worker in your final semester.





Neve C.

Graduated 2019

Pursuing a Master  
of Social Work



Peer Tutor

Peer Note-taker

FCSS See | Change Symposium  
Speakers Coordinator

Research Assistant

Research Associate, Soka  
Education Research Initiative on  
Global Citizenship

Renewable Scholarships

Family & Community Social  
Services Scholarship

Vice-Provost Award for  
Academic Excellence



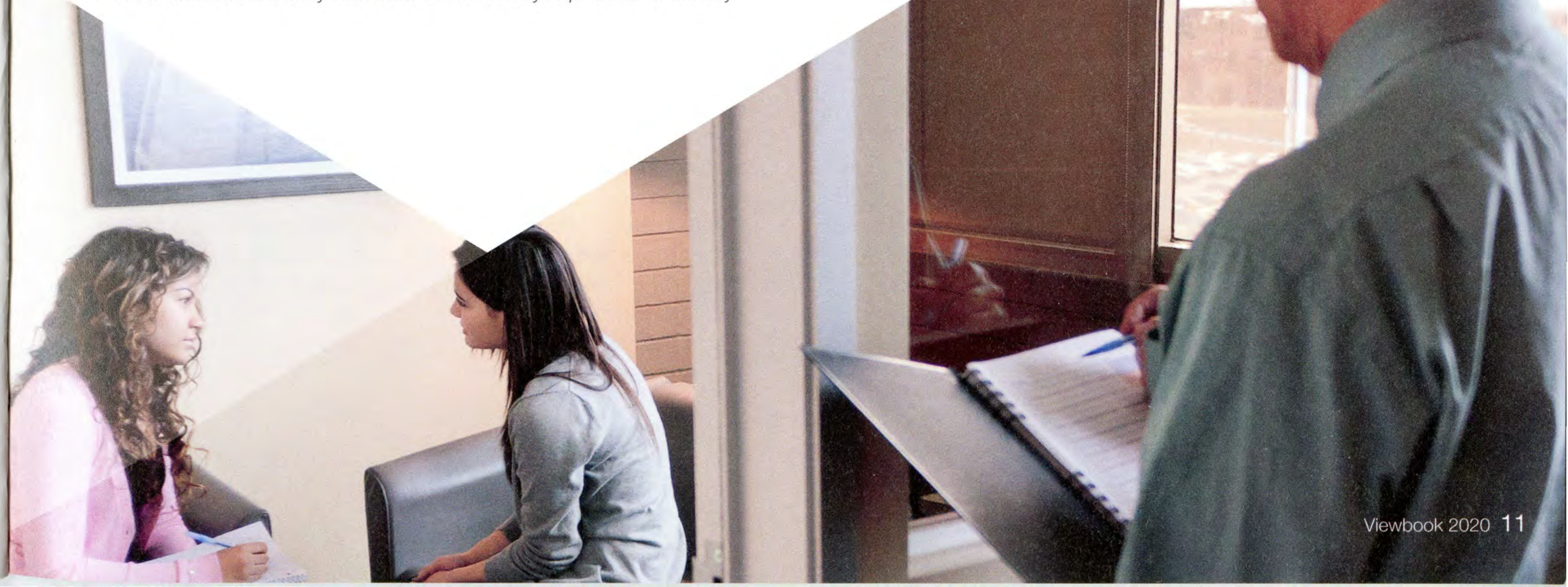
*“The initial draw to Guelph-Humber was the integrated diploma and university degree because when I was applying to schools, I wasn’t sure if I wanted to do college or university. Now, I’ve earned both a diploma and degree, and the door is open for me to pursue grad school.”*



## Sample careers and further education

- > Addictions Coordinator
- > Case Manager
- > Community Support Worker
- > Community Youth Worker
- > Crisis Counsellor
- > Family and Community Mediator
- > Family Support Coordinator
- > Hospice Support Worker
- > Intensive Behaviour Therapist
- > Mental Health Worker
- > Parole Officer
- > Social Service Coordinator
- > Social Worker
- > Volunteer Coordinator
- > Youth Residential Worker
- > Bachelor of Social Work
- > Master of Social Work
- > Bachelor of Education
- > Master of Arts in Public Policy & Administration
- > Master of Arts in Critical Disability Studies
- > Law School
- > Postgraduate certificate in Mental Health & Addictions
- > Master of Arts in Clinical & Counselling Psychology

*Note: Some careers and entry into further education may require additional study.*





# Justice Studies

Prepare for a future in a public service role in public, private, community and/or institutional settings.

more  
in

# 4

Earn 2 credentials in 4 years.

**HONOURS BACHELOR  
OF APPLIED SCIENCE**



**DIPLOMA IN COMMUNITY AND  
JUSTICE SERVICES  
OR POLICE FOUNDATIONS**



IN 2018, OUR CSI TEAMS SWEEP THE **TOP FOUR SPOTS** AT THE CSI CHALLENGE AT MOUNT ST. MARY'S UNIVERSITY, MARYLAND.

## Focused academic program

Throughout your four years, you will be exposed to the justice system: from the rules we follow to dealing with people and communities, to the hands-on processing of crime scenes and making arrests. Build key skills required in any area of justice such as critical thinking, research methods and how to write effectively.

In your first year, you will build a foundation in justice and related fields. In year two, you begin to take courses that touch on various services and how they are delivered, such as counselling, conflict resolution, forensics and policing.

In your second year, you decide which diploma to pursue, focusing in on one of these two areas:

### **Community and Justice Services**

Focuses on social issues and explores the development of community programs, ways to work with both victims and offenders, and methods of crime prevention.

or

### **Police Foundations**

Prepares you for a career in the various levels of law enforcement in the Canadian justice system.

Years three and four move on to advanced courses that immerse you in issues such as ethics; equality; rights and freedoms; youth and the law; and criminology.

## First-year courses

- > Crime & Criminal Justice
- > Criminal Offences
- > English I: Reading & Writing Effectively
- > Health & Wellness
- > Introduction to Law
- > Introduction to Police Powers
- > Introductory Psychology: Dynamics
- > Principles of Sociology
- > Provincial Legislation
- > Public Sector Management

## Experiential learning

Unique to our justice program, you will take part in at least **200 hours** of community service placements in your second and third years, experiencing two justice agencies/organizations.

Past placements include:

- > Alcohol and Gaming Commission of Ontario
- > Canada Border Services Agency
- > Elizabeth Fry Society
- > Law offices
- > Ministry of the Attorney General
- > Toronto Court Services
- > Toronto South Detention Centre
- > Various police services
- > Yonge Street Mission

*Note: You may be required to complete a Vulnerable Sector Screening and/or Criminal Reference Check prior to placement.*

## Opportunities

### **Investigate crime**

Evaluate staged crime scenes in our crime scene investigation (CSI) room. Use mock court to role-play a case. Learn investigative techniques and how to handle evidence. Join one of our CSI teams and compete in competitions abroad.

### **Observe social issues**

In the Canadian Social Problems course, take part in a street walk with classmates and faculty in downtown Toronto to observe and research social issues, such as poverty and homelessness.

### **Practise leadership and excellence**

Join the Criminal Justice Honour Society, Alpha Phi Sigma, that promotes academic excellence, community service, educational leadership and unity. Become a member of the Pre-Law Society to foster a culture of legal inquiry and critical thought processes in the academic community; members compete in moot court competitions and prepare for LSATs and law school.





Dalton B.

4<sup>th</sup> year

Planning to pursue graduate school, e.g., Master's degree in Criminology or International Relations/ Political Science



Swoop, School Mascot

President, Alpha Phi Sigma

Competitor, Osgoode Cup and Lions Cup Mooting Competitions

Member, Pre-Law Society

Student Senator

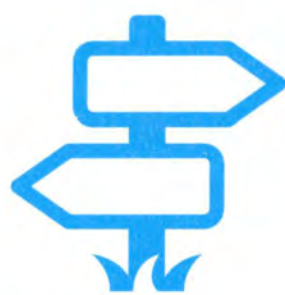
Study Abroad, Costa Rica

Founders' Academic Merit Scholarship

Justice Studies Scholarship



*"Small class sizes allow me to better connect with my classmates and professors. I have developed personal and professional connections that have allowed me to excel beyond what I ever thought I was capable of."*



### Sample careers and further education

- > Anti-terrorism Analyst
- > Border Services Officer
- > Corporate Investigator
- > Court Reporter
- > Bylaw Enforcement Officer
- > Crime Analyst
- > Lawyer
- > Anti-money Laundering Investigator
- > Parliamentary Assistant
- > Corporate Security Manager
- > Parole Officer
- > Policy Analyst
- > Insurance Investigator
- > Probation Officer
- > Case Worker
- > Police Officer
- > Victim Services Worker
- > Law School
- > Master of Arts in Criminology
- > Bachelor of Education
- > Master of Public Administration
- > Master of Arts in Political Science

*Note: Some careers and entry into further education may require additional study.*





# Kinesiology

Turn your passion for health and wellness into a career in kinesiology and influence the future of sport and healthcare.

more  
in

# 4

Earn 2 credentials in 4 years.

**HONOURS BACHELOR  
OF APPLIED SCIENCE**



**DIPLOMA IN FITNESS AND  
HEALTH PROMOTION**



**18 OF YOUR CORE KINESIOLOGY COURSES  
ARE PAIRED WITH LABS.**

## Focused academic program

Learn how the body works, how to make it work better, what causes health issues and how to prevent illness. Develop a strong scientific and theoretical background and apply this knowledge to healthy populations, elite athletes, individuals with chronic diseases and people with physical challenges. Confidently apply yourself in any environment, such as health promotion, fitness, rehabilitation, coaching and research.

In the first two years of the program, you learn the fundamentals of the human body. Learn anatomy in a human cadaver lab in your first year: a rare undergraduate experience. In the third and fourth years, your courses focus on performance and clinical applications of exercise and nutrition theory.

## First-year courses

- > Biochemistry & Metabolism I
- > Cell Biology
- > Health Counselling & Behaviour Change
- > Human Anatomy I
- > Human Anatomy II
- > Human Physiology I
- > Introduction to Health & Wellness
- > Introductory Mathematics for Kinesiology
- > Practicum

## Experiential learning

You can complete **87 to 241 placement hours** during your final two years. All students have an on- and off-campus placement in third year. On campus, you will work one-on-one with a client to help reach their fitness goals through a personal training placement. Off campus, you will be placed with an organization offering applied experience. In your fourth year, choose an off-campus placement with an independent research study or complete a thesis project in a lab setting.

Past placements include:

- > NeuroChangers Neurological Rehabilitation
- > Athletic and varsity programs
- > Cardiac rehabilitation facilities
- > Centre for Addiction and Mental Health
- > Corporate wellness departments
- > Multidisciplinary clinics
- > Princess Margaret Cancer Centre
- > SickKids Hospital
- > Peel District School Board
- > YMCA

## Opportunities

### Learn through labs

Labs extend your classroom content through applied techniques and hands-on lessons. They are integrated into every year of study and enhance your learning experience of anatomy, exercise prescription, biomechanics, fitness assessment and more.

### Choose career-relevant practicums

You will take at least four practicum courses, focusing on current industry trends to gain hands-on experience in an area of interest. Courses include Functional Ability Evaluation; Athletic Bandaging and Taping Techniques; Martial Arts for Group Fitness Training; and Forensic Kinesiology.

### Complete research

Our program offers unique, valuable research experience through placement hours for research-based work and literature review or thesis courses.

### Professional accreditations

With your degree, you are eligible to pursue the following designations with several professional organizations such as Registered Kinesiologist with the College of Kinesiologists of Ontario; Certified Personal Trainer; Certified Exercise Physiologist; and Certified Strength and Conditioning Specialist.





Denny T.

Graduated 2019

Interested in pursuing  
a Bachelor of Education



Personal Trainer, Humber Fitness  
Centre

Research Associate, Soka Education  
Research Initiative on Global  
Citizenship

Study Abroad, Japan and Singapore  
Entrance Scholarship



*“What I love about Guelph-Humber  
are the experiential learning  
opportunities it offers. The thesis  
project allowed me to dip my  
toes into the research world,  
create something new and exciting  
while contributing to the study  
of biomechanics.”*



### Sample careers and further education

- > Registered Kinesiologist
- > Certified Strength and Conditioning Specialist
- > Certified Exercise Physiologist
- > Health Promotions Manager
- > Occupational Health, Wellness and Abilities Advisor
- > Rehabilitation Therapist
- > Research Associate
- > Wellness Coordinator
- > Master of Science in Physical Therapy
- > Master of Science in Occupational Therapy
- > Bachelor of Education
- > Master of Science
- > Master of Public Health
- > Master of Arts in Health Promotion
- > Chiropractic College
- > Naturopathic College
- > Medical School
- > School of Dentistry

*Note: Some careers and entry into further education may require additional study.*





# Media Studies

Learn how to communicate and develop the skills to use different media platforms to meet tomorrow's needs.

more  
in

# 4

Earn 2 credentials in 4 years.

**HONOURS BACHELOR  
OF APPLIED ARTS**



**DIPLOMA IN MEDIA  
COMMUNICATIONS**



FOR 6 YEARS, EMERGE STUDENTS HAVE WON A COLLEGIATE GOLD CROWN AWARD FROM THE COLUMBIA SCHOLASTIC PRESS ASSOCIATION!

## Focused academic program

Keep pace with a rapidly changing industry. Start by learning how media has developed then look ahead to emerging trends. You will be introduced to various media and study the historical, social, cultural and ethical aspects of the industry. Following your second year, you will choose one of five specializations to direct your studies. However, you are not limited by your specialization. You can take courses from any of these areas as well.

Third- and fourth-year courses teach you about governance and policy and how to work in a team environment; for example, by producing a digital news site or television broadcast or promoting and managing a large event.

## Specializations

**Digital Communications:** Create multiplatform content using web design, audio and videography.

**Journalism:** Explore print, broadcast and online journalism with a strong focus on writing, editing and pitching stories.

**Media Business:** Learn the business of managing media sales, marketing and advertising.

**Public Relations:** Learn corporate communications, media relations and event management using various tools, including traditional and social media.

**Visual Communication:** Learn the fundamentals of photography combined with elements of production, design and videography. Learn to create, manipulate and edit images, design concepts and video.

## First-year courses

- > Communication, Technology & Culture
- > Communications Perspective
- > English I: Reading & Writing Effectively
- > Ethical Issues
- > Film Study
- > General Elective
- > Internet Survey & Research
- > Introduction to Journalism & Public Relations
- > Photography & Digital Imaging
- > Visual Communication & Design

## Experiential learning

After third year, you will complete an internship of more than **200 hours**. International internships are another exciting course opportunity.

Internships have included:

- > Rogers Media: 680 News, *Today's Parent*, *Flare*
- > *The Walrus*
- > Bell Media: TSN, Marilyn Dennis Show, The Social
- > Corus Entertainment: ET Canada, Big Brother Canada, Global News
- > Faulhaber Communications
- > Heart and Stroke Foundation
- > Maple Leaf Sports & Entertainment
- > *National Post*
- > NKPR
- > SickKids Hospital
- > Canadian Broadcasting Corporation
- > Toronto International Film Festival
- > Universal Music Canada
- > Walt Disney Studios Canada

## Opportunities

### Tools of the trade

You have access to the latest industry technology, such as a virtual reality studio, multimedia production facility equipped with a soundstage, HD multi-camera setup and switcher and edit workstations. Full-frame photo cameras, 4K digital cinema cameras and professional studio lighting are available to sign out.

### Individual thesis

Complete an undergraduate thesis in year four. Increase your knowledge and applied research skills in a specific area of media studies; learn research principles and project coordination; and build your presentation skills. You will conduct your own study, analyze the data and write a thesis paper.

### Teamwork

In your fourth year, you work on Emerge, a groundbreaking media project that brings together all five specializations. In addition to creating a print and online magazine, students plan the final ceremony for a national media awards program and a variety of events, all of which are supported by multiplatform digital marketing campaigns.





Leviana C.

Graduated 2012

Currently working  
as Communications  
Manager, TD Canada  
Trust; Communications  
Officer, The Period  
Purse; Founder and  
Editor, A Quarter Young



Event Assistant

Learning Support Peer

Managing Editor, *Emerge Magazine*

Senior START Leader

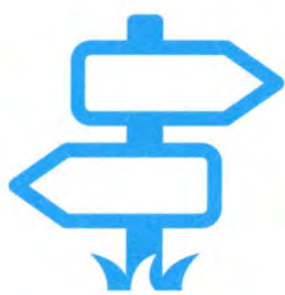
Humber Homework Club

Entrance Scholarship

Merit Scholarships



*“The school has such a tight-knit community, I met so many people from different programs and years. I keep in touch with many of these people today, and my former boss is also a Guelph-Humber grad!”*



### Sample careers and further education

- > Account Coordinator
- > Brand Strategist
- > Art Director
- > Communications Manager
- > Social Media Specialist
- > Digital Content Producer
- > Digital Communications Specialist
- > Editor (web, print, story)
- > Event Coordinator
- > Experiential Marketer
- > Fundraising Strategist
- > Media Buyer
- > Photographer/Videographer
- > Production Assistant
- > Public Affairs Specialist
- > Publicist
- > Radio/TV Broadcaster
- > Web Developer
- > Master of Arts in Communications
- > Master of Journalism
- > Master of Professional Communication
- > Bachelor of Education
- > Law School

*Note: Some careers and entry into further education may require additional study.*





# Psychology

Examine theories and research exploring human thought, feeling and behaviour.

more  
in

# 4

Earn 2 (or 3) credentials in 4 years.

**HONOURS BACHELOR  
OF APPLIED SCIENCE**



**DIPLOMA IN GENERAL  
ARTS AND SCIENCE**

Optional certificate in: Intercultural Relations, Organizational Behaviour or Research Skills and Analysis



AS A HIGH SCHOOL APPLICANT,  
COMPETE IN THE PSYCHATHLON TO  
WIN A \$1,000 SCHOLARSHIP!

## Focused academic program

Discover how psychology plays a role in every area of society, then find your niche. Study the brain. Learn research skills. Explore the processes and factors that shape who we become by studying topics such as development and aging, learning difficulties, ethics, culture, neuroscience, cognition, psychotherapy, abnormal psychology and persuasion.

Your first two years introduce you to key concepts and provide foundational courses. In years three and four, your courses will become more focused and offer more applied study. In addition to your honours degree and diploma, you have the option to pursue one of three certificates in years three and four:

### **Intercultural Relations**

Increase your cultural literacy and enrich your understanding of diversity in Canada.

### **Organizational Behaviour**

Develop a greater understanding of leadership, groups and behaviour in organizations.

### **Research Skills and Analysis**

Expand your knowledge of research methods in psychology and refine your investigative and analytical abilities.

In your final year, you will choose between an honours seminar and thesis.

## First-year courses

- > Critical Thinking
- > Developmental Psychology
- > English I: Reading & Writing Effectively
- > General Elective
- > Introductory Psychology: Dynamics
- > Introductory Psychology: Principles
- > Modern & Contemporary Philosophy
- > Principles of Anthropology
- > Principles of Sociology
- > The Wonders of Science

## Experiential learning

In the third-year course Applied Study in Psychology, you will integrate psychological theory and research with at least **100 hours** of workplace experience.

Placements have included:

- > Alzheimer Society of Toronto
- > Baycrest Health Sciences (Hospital)
- > Big Brothers Big Sisters of Peel
- > Holland Bloorview Kids
- > Kids Help Phone
- > March of Dimes Canada
- > Ontario Correctional Institute
- > Sinai Health System
- > The Psychology Foundation of Canada

*Note: You may be required to complete a Vulnerable Sector Screening prior to placement.*

## Opportunities

### **Learn outside the classroom**

As part of the optional field course, learn from Elders, community members and local mental healthcare service providers working among Indigenous communities in northern Ontario. Examine the successes, challenges, treatments and future of mental health in these communities and across Canada.

### **Networking**

Take part in Common Time: weekly workshops, notable guest lecturers and special events that bring together fellow classmates and faculty in an academic and social atmosphere. Many activities are run by our student-led Psych Society.

### **Psi Chi Honour Society**

Expand your professional and academic networks. Discuss news, research, challenges and other current topics in psychology with psychology professionals.





Christine B.

Graduated 2017

Master of  
Developmental  
and Educational  
Psychology, 2019

Currently completing a  
PhD in Developmental  
and Educational  
Psychology



Research Assistant

Peer Note-taker

Indigenous Field Study

Entrance Scholarship

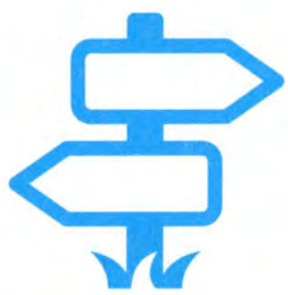
Merit Scholarships

Psych Society Triple Crown Award

Vice-Provost Award for  
Academic Excellence



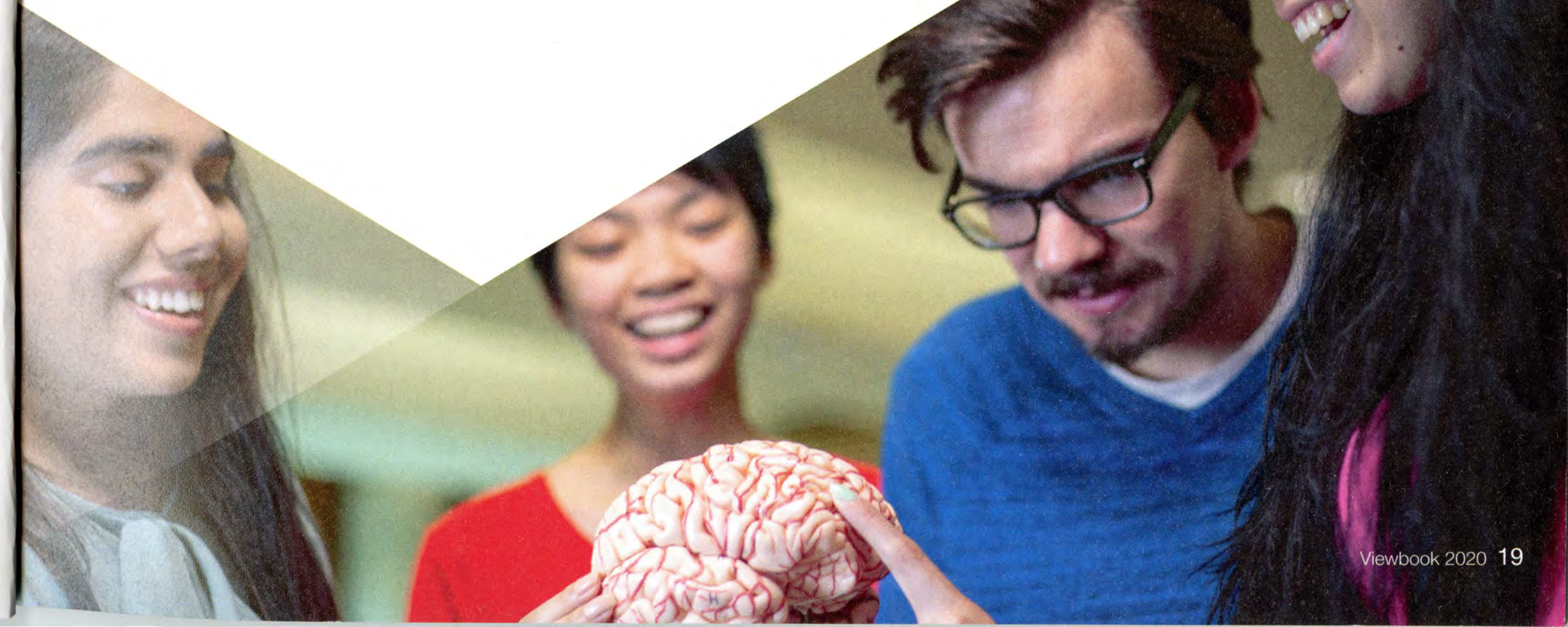
*“Guelph-Humber offers great research opportunities. I gave conference presentations in Toronto, London and Ottawa that were engaging learning experiences. I completed my own undergrad thesis, and I was a Research Assistant for two research projects.”*




### Sample careers and further education

- > Addiction Counsellor
- > Behaviour Therapist
- > Case Manager
- > Group Facilitator
- > Human Resources Specialist
- > Mental Health Worker
- > Neuroscientist
- > Psychologist
- > Psychometrist
- > Psychotherapist
- > Rehabilitation Counsellor
- > Researcher
- > Masters/PhD in Psychology
- > Medical School
- > Master of Social Work
- > Master of Education
- > Bachelor of Education
- > Law School
- > Master of Arts in Counselling Psychology
- > Master of Arts in Clinical Psychology
- > Master of Science in Neuroscience

*Note: Some careers and entry into further education may require additional study.*







*“My experience in Northern Ireland really changed how I view the world. I was a homebody, now I’m ready to take on the world! I want to explore every inch of Ontario, Canada, Europe ... It instilled a type of confidence that I might not have otherwise.”*

*> Montana M., Justice Studies graduate*

more

perspective

Travelling abroad changes your view about the world and yourself

## Study abroad

Through instructor-guided study tours, you experience concepts discussed in class. Because all study abroad courses are partially subsidized by the University, the opportunities are within reach.

**You may also be eligible for a study abroad travel grant, ranging from \$1,500 to \$2,500.**

Past highlights include:

- > Going to outdoor classrooms in Odense where children interact with nature: an example of Denmark’s unique contribution to child development
- > Learning about a philosophy of well-being and global citizenship in Japan
- > Exploring the interplay between sport, health and culture in New Zealand’s Australasian society
- > Understanding freedom of speech through the examples set in the Netherlands and Denmark

- > Heading to the Galápagos Islands and inland Ecuador to study “eco-psychology” – the attitudes, perceptions and behaviour of people toward the environment
- > Visiting areas of historical/cultural significance in Ireland to interact with academics, community groups, and agencies involved in governance, democracy, and human rights

## Exchanges

Spend a semester overseas at a foreign university such as Hanze University of Applied Sciences, Netherlands; Soka University, Japan; or Ulster University, Northern Ireland. Experience a different culture, see the world and meet new people.

Our professors lecture at universities and conferences around the world. International professors may visit your class to share their academic expertise and culture with you. Guest lecturers have included Dr. Ester McGuinness from





*“Study abroad was unforgettable! I was fortunate enough to travel to Thailand and Japan. Each trip had its own uniqueness that built my self-confidence and I learned new things about myself. I am using those experiences to inspire my future and create change.”*

*> Veronica C., Early Childhood Studies graduate*

Ulster Law School, Northern Ireland; Dr. Jorge Yamamoto from Pontifical Catholic University of Peru; and Dr. Karen Stuart, University of Cumbria, UK.

## Competitions & conferences

Extracurricular activities can be out of town! For competitions and conferences our students have travelled the world, heading to many Canadian and US cities and flying as far as Guatemala and South Africa.

## Partnerships

### The City Law School (LLB)

The University of Guelph-Humber and The City Law School, City, University of London have partnered to offer you a prime law school opportunity. Earn a senior status law degree in only two years following completion of your honours degree.

- > Eligible for admission with a competitive average
- > No LSAT
- > Reduced tuition

Study in London, England, where the largest law firms in the world are located. The Graduate Entry LLB (Hons) program attracts students from all over the world—many from Canada. Follow in the footsteps of renowned alumni such as Mohandas Karamchand Gandhi, Margaret Thatcher and Tony Blair.

### University of London (LLM)

The partnership with the University of London allows our justice graduates to study for a prestigious Master of Laws (LLM) anywhere in the world with their online program. You can complete a general degree or pursue a specialization.

- > Start at any time
- > Complete at your own pace
- > Reduced tuition



# Student Experience

more

access  
to support

WELC







# Support

Life as a University of Guelph-Humber student means being part of a close-knit community.

## Your support team

You have a team to rely on. Every program has an:

- > Academic Advisor
- > Field Placement Coordinator
- > Career Services Coordinator
- > Program Head and Assistant Program Head

Our small student population means we'll know you in our student services offices and you'll have easy access to assistance for all your first-year needs. We're here to help with:

- > Transitioning to university life
- > Meeting other students
- > Financial advice
- > Course selection
- > Placement services
- > Career planning
- > Student employment
- > Referrals to other support services

You can also rely on current students who work alongside staff and are trained to help you. These senior students are knowledgeable about the resources available to you. They

offer you a student perspective and understand your needs. Seek out:

- > Career Support Peers
- > Computer Support Assistants
- > First Year Experience (FYE) Leaders
- > Learning Support Peers
- > Research Support Peers
- > Student Transition and Resource Team (START) Leaders

## Careers start here

Launch your career in year one with career staff to guide you and provide one-on-one assistance. We are here to help you:

- > Build confidence
- > Clarify your goals
- > Develop professional skills
- > Search for jobs and network
- > Apply to graduate school
- > Succeed in placement

Participate in career exploration and skill-building workshops and events, such as CareerQuest, CliftonStrengths, "Personal Branding", program-specific career fairs and LinkedIn training sessions.



## Be 1 of 900 first-year students

With numbers like these, you have quick and easy access to support staff, resources, professors and classmates!







*“Career and Placement Services played an enormous role in my life. They helped me achieve my dream of getting into Canadian Memorial Chiropractic College. It’s quite apparent that they genuinely want to help students succeed.”*

*> Anthony M., Kinesiology graduate*

## A community in a community

As a University of Guelph-Humber student you are part of our close-knit university community, but also part of Humber’s 20,000-student population. Take advantage of both worlds! The support services and resources made available by Humber are yours, too.

For health issues, personal matters, academic assistance and other support, reach out to our campus services, including:

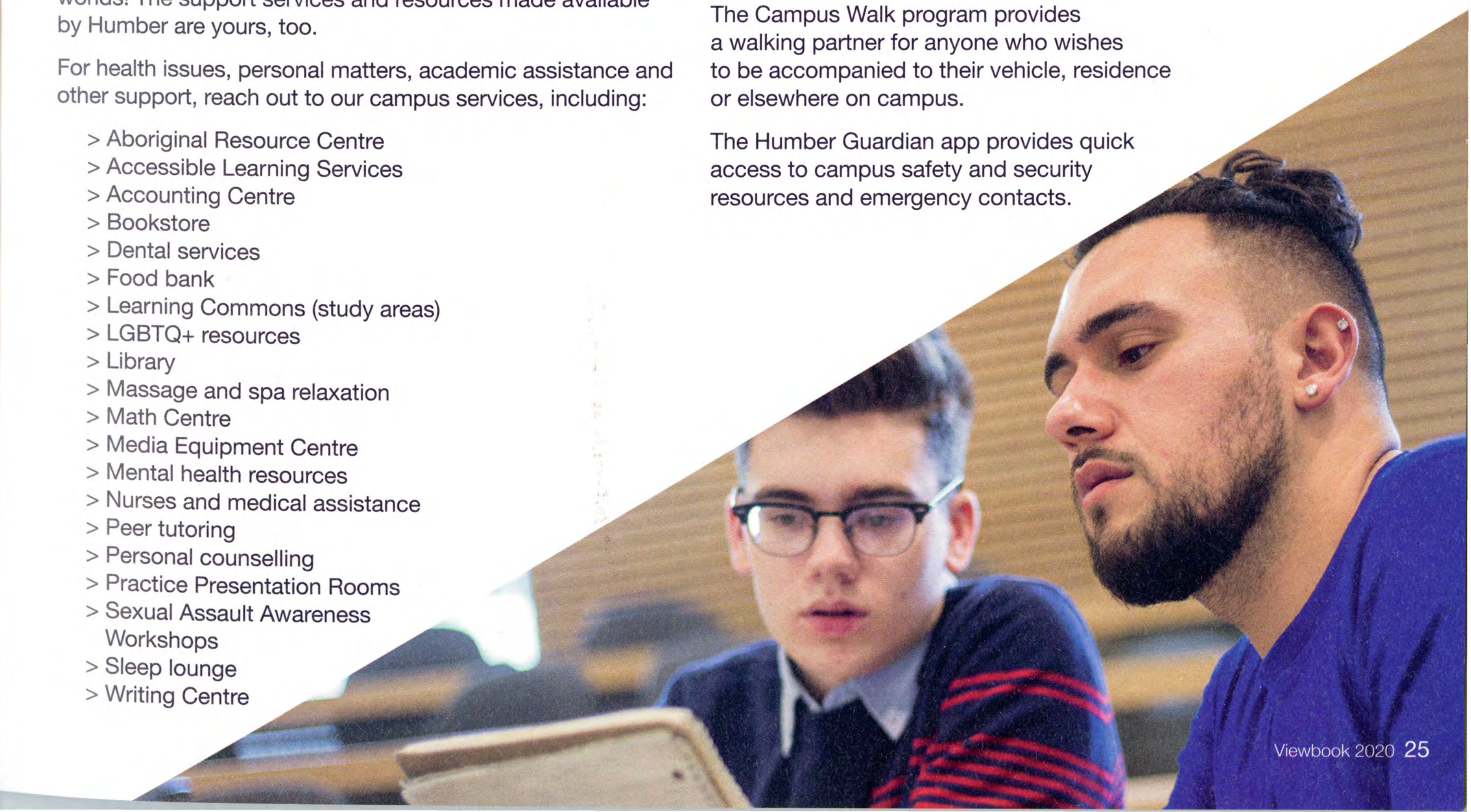
- > Aboriginal Resource Centre
- > Accessible Learning Services
- > Accounting Centre
- > Bookstore
- > Dental services
- > Food bank
- > Learning Commons (study areas)
- > LGBTQ+ resources
- > Library
- > Massage and spa relaxation
- > Math Centre
- > Media Equipment Centre
- > Mental health resources
- > Nurses and medical assistance
- > Peer tutoring
- > Personal counselling
- > Practice Presentation Rooms
- > Sexual Assault Awareness Workshops
- > Sleep lounge
- > Writing Centre

## Public safety

Your safety is paramount. Campus Security patrols the campus 24 hours a day, 7 days a week.

The Campus Walk program provides a walking partner for anyone who wishes to be accompanied to their vehicle, residence or elsewhere on campus.

The Humber Guardian app provides quick access to campus safety and security resources and emergency contacts.





# Campus Life

Build your skills and social circle by participating in activities on campus.

## First-year students' programs and events

We want you to make the most of your university experience by participating in programs designed for you as a first-year student to meet people and get acquainted with the University.

**First Year Experience (FYE) Program:** Connect online with your FYE Leader throughout the summer to ease your transition to university. You meet other first-year students in your program, online and at Orientation. Mentoring and support from FYE Leaders continues through your first year.

**Easy Start Transition Program:** Provides new students with disabilities with resources and information to assist in transitioning to postsecondary studies. You can explore services, learn about accessing academic accommodations and meet returning students registered with Accessible Learning Services.

**Kick Start:** This one-day program-specific event in July helps you and your family prepare for university through information sessions and hands-on activities.

**Orientation:** Connect with other incoming students at this fun, students-only, official welcome to life at the University. We'll get you set for classes and show you how to get involved and be successful.

## Clubs

Clubs are social, cultural or interest-based and can change year to year. Clubs are the best way to meet people who share your passions. If you don't find what you're looking for you can start your own! We've had clubs for games, pies, dancing, grilled cheese, music, sustainability, various cultures and more.

## Societies

Societies are related to our seven academic programs and offer a realm of activities outside of class with a focus on your field of interest. They can help you develop leadership skills, gain professional experience and network.

- > Accounting Council
- > Advertising & Marketing Association
- > Alpha Phi Sigma
- > Business Council
- > Consulting Association
- > DECA U
- > ECS Society
- > Entrepreneurs Society
- > FCSS Society
- > Finance Society
- > GuHu Media
- > International Business Association
- > Kinesiology Society
- > Technology Society
- > Pre-Law Society
- > Pre-Med Society
- > Psi Chi
- > Psych Society
- > Women in Business

## Work on campus

Gain professional experience and earn money, with a flexible schedule to accommodate your classes. Opportunities include:

- > Career Support Peer
- > Communications and Public Relations Assistant
- > Computer Support Assistant
- > CSI Room Forensic Assistant
- > ECS Resource Centre Assistant
- > First Year Experience (FYE) Leader
- > Kinesiology Lab Assistant
- > Learning Support Peer
- > Media Cage Assistant
- > Media Intern
- > Peer Tutors
- > Social Media Assistant
- > Student Life Assistant
- > Student Services Support Peer







*“Psi Chi has allowed me to improve my skills in leadership, time organization and team building through working with my executive team to carry out events for the Psychology program.”*

*> Lena C., former President, Psi Chi/Psychology graduate*

## Student government

Interested in political life and advocating for your fellow students? Consider becoming active in student government, such as Ignite or the University of Guelph Senate.

## Agora Fellowship

Be a part of The Agora Fellowship: a select group of students who discuss ideas and themes from renowned books in a regular forum led by Assistant Vice-Provost Dr. George Bragues. Build your extracurricular experience. Every year, the Fellowship takes a trip related to their current topics; destinations have included Boston, Montreal, New York and Washington.

## Soka Education Research Initiative on Global Citizenship

Join a global, undergraduate research project—the first of its kind in the world—led by Family and Community Social Services Program Head, Dr. Paul Sherman. Explore how to nurture human potential and happiness for the greater benefit of humankind through the study of Soka (value creating) education and global citizenship. Travel as a Research Associate to present study results at professional symposiums.

### Build a Co-Curricular Record (CCR)

Demonstrate to employers that you have hands-on experience and skills learned outside the classroom. Your CCR lists your participation in University clubs, societies, student government and other co-curricular activities.





# Sports & Healthy Living

Whether you prefer working out solo, recreational play, competitive sports or watching from the sidelines, there's something for everyone's definition of being active.

## Athletic Centre

As a University of Guelph-Humber student, you have access to the Athletic Centre on campus, which offers:

- > Aerobic studio
- > Community pool
- > Gymnasiums
- > Multi-purpose sports fields
- > Weight and cardio room

## Recreational sports

Take a break from class. Enjoy your favourite activities. Try something new.

- > Arboretum trails
- > Boot camp
- > Extramural leagues
- > Intramural leagues
- > Urban pole walking
- > Yoga
- > More!

*"I enjoyed playing extramural Ultimate because it allowed me to get involved outside of the classroom. I've met a lot of incredible people and made friendships that I will cherish for the rest of my life!"*

> Mishaal S., Business, 4<sup>th</sup> year



**Claudia P.**

*Psychology*

*Plans to pursue a Master of Science in Speech Language Pathology*



Humber Hawk, Soccer

Two-time OCAA Indoor Soccer Champion

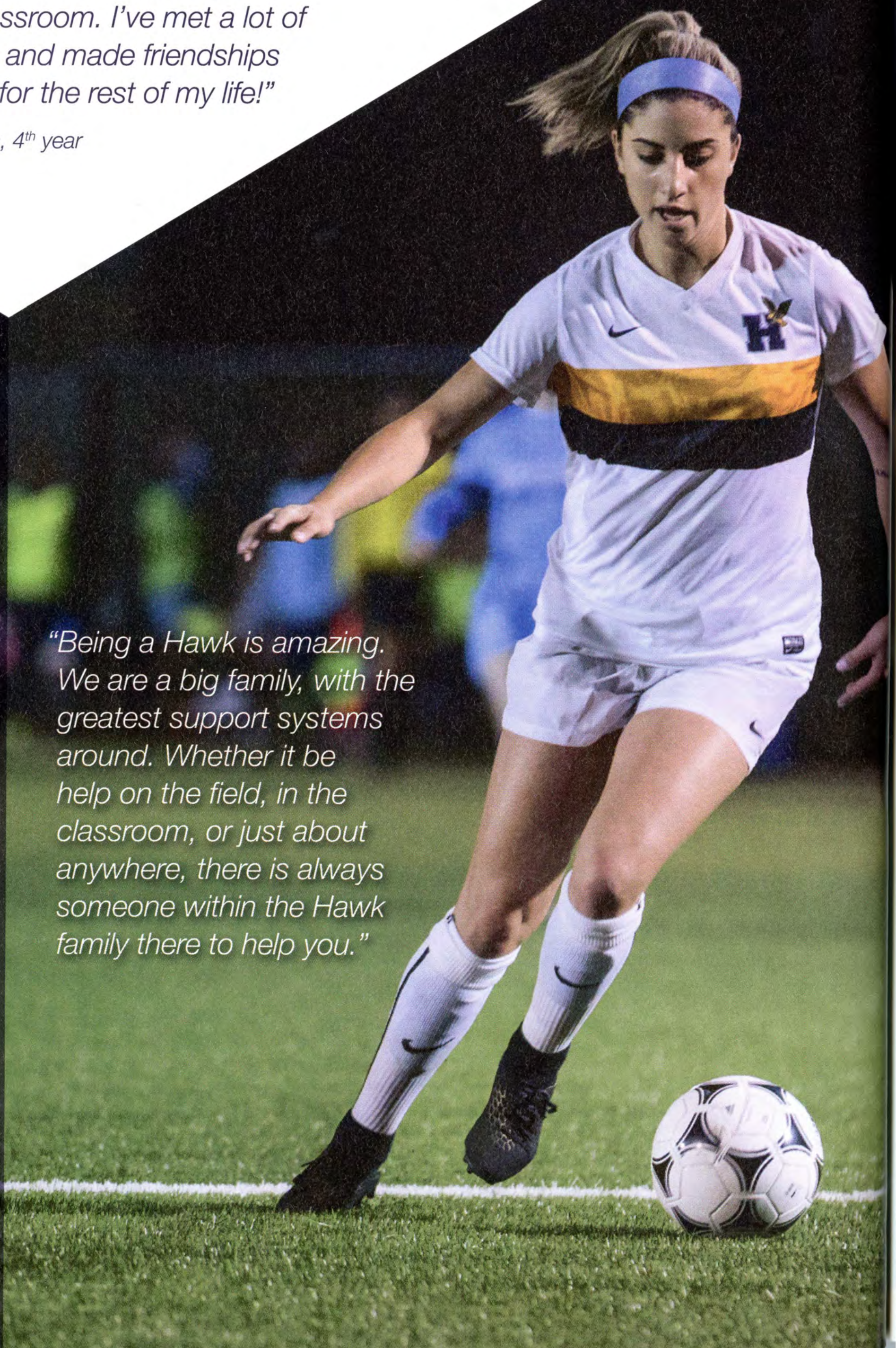
Two-time OCAA Outdoor Soccer Silver Medal

2019 OCAA Indoor Soccer Championship MVP

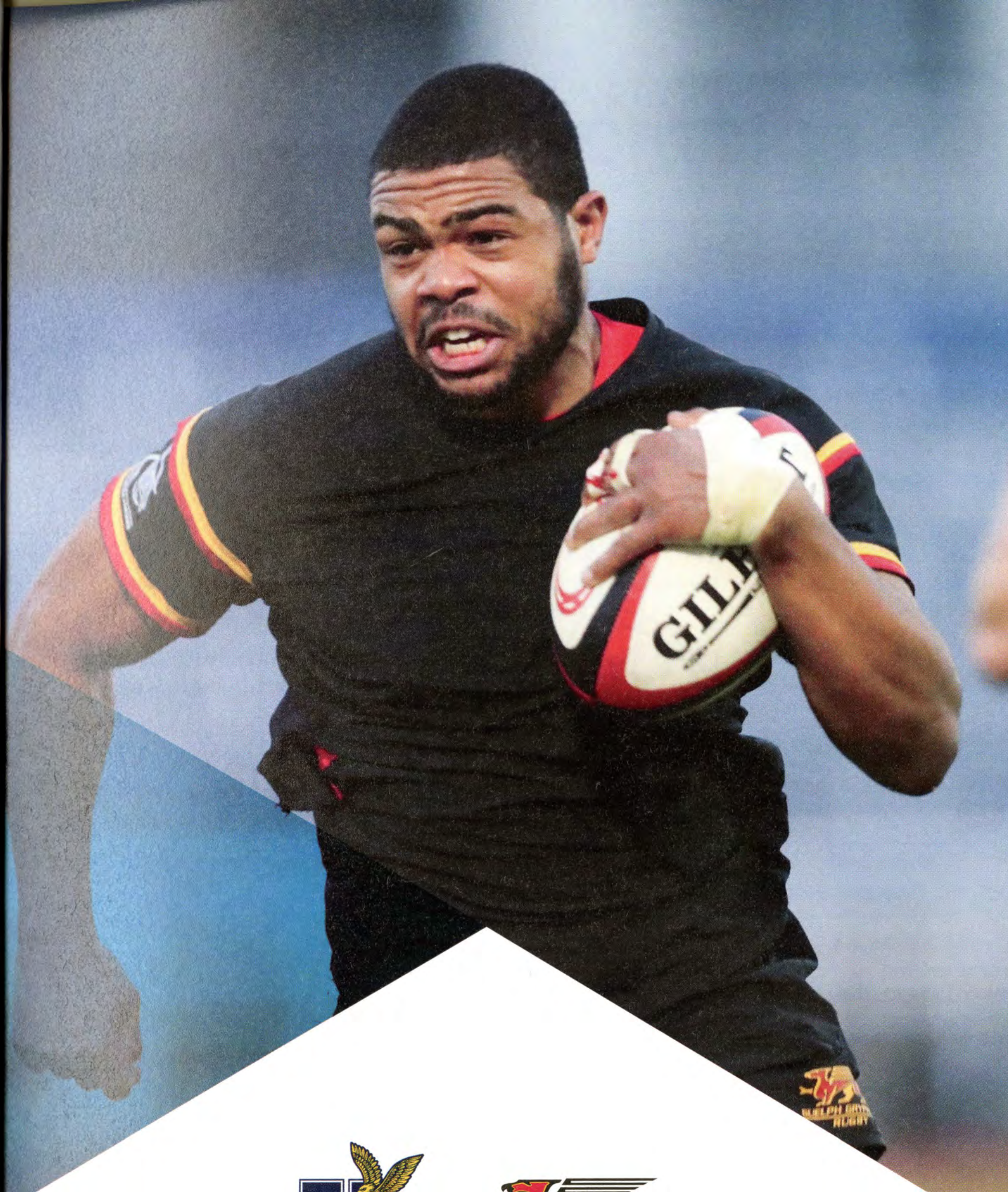
Two-time OCAA Championship All-Star

Two-time OCAA League All-Star

*"Being a Hawk is amazing. We are a big family, with the greatest support systems around. Whether it be help on the field, in the classroom, or just about anywhere, there is always someone within the Hawk family there to help you."*







**Marcello W.**

*Kinesiology*

*Currently playing for the Toronto Arrows, with plans to pursue work in strength and conditioning*



Guelph Gryphons, Rugby

Two-time OUA All-Star

Two-time Team MVP

Men's Rugby OUA Championship 2016

Renewable Entrance Scholarship

Ignite Student Scholarship for Community Involvement

*"Being a varsity athlete is very helpful. There's a lot to adjust to in university, but the transition is easier when you instantly have a group of people who accept you, share your struggles and provide advice and support. Those relationships add meaning to the whole experience."*



## Varsity athletics

Compete against other universities and colleges in the province and throughout the country. You can try out for either the University of Guelph Gryphons or Humber Hawks. For more information, visit University of Guelph Athletics at [gryphons.ca](http://gryphons.ca) or Humber Athletics at [humberhawks.ca](http://humberhawks.ca).

Following the Okanagan Charter, we have a commitment to our students' physical, mental and social well-being and embedding health and wellness in all aspects of campus culture.

### Guelph Gryphons

- M Baseball
- M W Basketball
- M W Cross-Country
- W Field Hockey
- M W Figure Skating
- M Football
- M W Golf
- M W Hockey
- M W Lacrosse
- M W Nordic Skiing
- M W Rowing
- M W Rugby
- M W Soccer
- M W Swimming
- M W Track & Field
- M W Volleyball
- M W Wrestling

### Humber Hawks

- M W Badminton
- M Baseball
- M W Basketball
- M W Cross-Country
- M W Curling
- M W Golf
- W Rugby
- M W Soccer, Indoor
- M W Soccer, Outdoor
- W Softball
- M W Volleyball



# Commuting

Our campus location makes commuting a great option.

The University of Guelph-Humber is on Humber's North Campus in northwest Toronto. We are located just off Highway 427, south of Finch.

## By public transit

Arrive steps from our front door. Ten routes that cross the GTA stop in the transit terminal loop on campus.

Transit system	Bus routes to campus	Website
Brampton Transit/Züm	<ul style="list-style-type: none"> <li>&gt; 511/511A Züm Steeles East/West</li> <li>&gt; 11/11A Steeles East/West</li> <li>&gt; 50 Gore Road</li> </ul>	brampton.ca
Mississauga (MiWay) Transit	<ul style="list-style-type: none"> <li>&gt; 107 Malton Express North/South</li> <li>&gt; 22 Finch East/West</li> </ul>	miway.ca
Toronto Transit Commission (TTC)	<ul style="list-style-type: none"> <li>&gt; 927 Highway 27 Express North/South</li> <li>&gt; 96 Wilson East/West</li> <li>&gt; 996 Wilson Express East/West</li> <li>&gt; 336 Finch West East/West</li> </ul>	ttc.ca
York Region/ VIVA Transit	<ul style="list-style-type: none"> <li>&gt; 7 Northbound/Southbound</li> </ul>	yrt.ca

Bus routes may change at any time, please check the official websites for up-to-date transit information. GO Transit does not come to campus but can be part of your transportation route. For GO Transit connections visit [gotransit.com](http://gotransit.com).

## By car

The campus is easy to reach from Highways 407 and 409 (east/west) and 427 and 27 (north/south).

Parking is pay per use or you can purchase a permit. Spaces are limited. For more parking details visit [guelphhumber.ca/futurestudents](http://guelphhumber.ca/futurestudents).

## Location



207 Humber College Blvd.



**Approximately 90% of students commute to campus**





# Home Away From Home

Build your independence and meet new people.

## Residence

### Why you want to live in residence:

- > As a first-time resident your room will be single style
- > Your room is a two-minute walk from the University
- > Choose from themed floors, such as co-ed, health and wellness or extended study
- > Choose your dining plan (three sizes available)
- > Dining plans accepted at the residence dining hall and food service outlets across campus
- > Two community kitchens can be used for cooking at home
- > Spend your spare time in the recreational space, exercise room or at residence Gym Nights in the campus Athletic Centre
- > Make friends with students from both the University of Guelph-Humber and Humber
- > Laundry in the building
- > Wi-fi in all rooms
- > Many social events

### Applying to residence

You can only apply for residence once you have an offer of admission. Details about how to apply online will be included with an offer of admission.

Residence operates on a first come, first served basis. Residence applications for fall open online on February 3, 2020. The deadline to apply is June 1, 2020.

For more residence information, visit [humber.ca/residence](https://humber.ca/residence).

## Living off campus

If you're planning to live off campus, Humber offers you support at [humber.ca/student-life/offcampuslife](https://humber.ca/student-life/offcampuslife) to help you find accommodations, advice for living away from home and information on community events.

*"During my time living in residence, I was able to learn how to be independent, while having the support of my Resident Assistant available if needed. I also worked in residence as part of the Work-Study Program."*

> Connor D., Business graduate



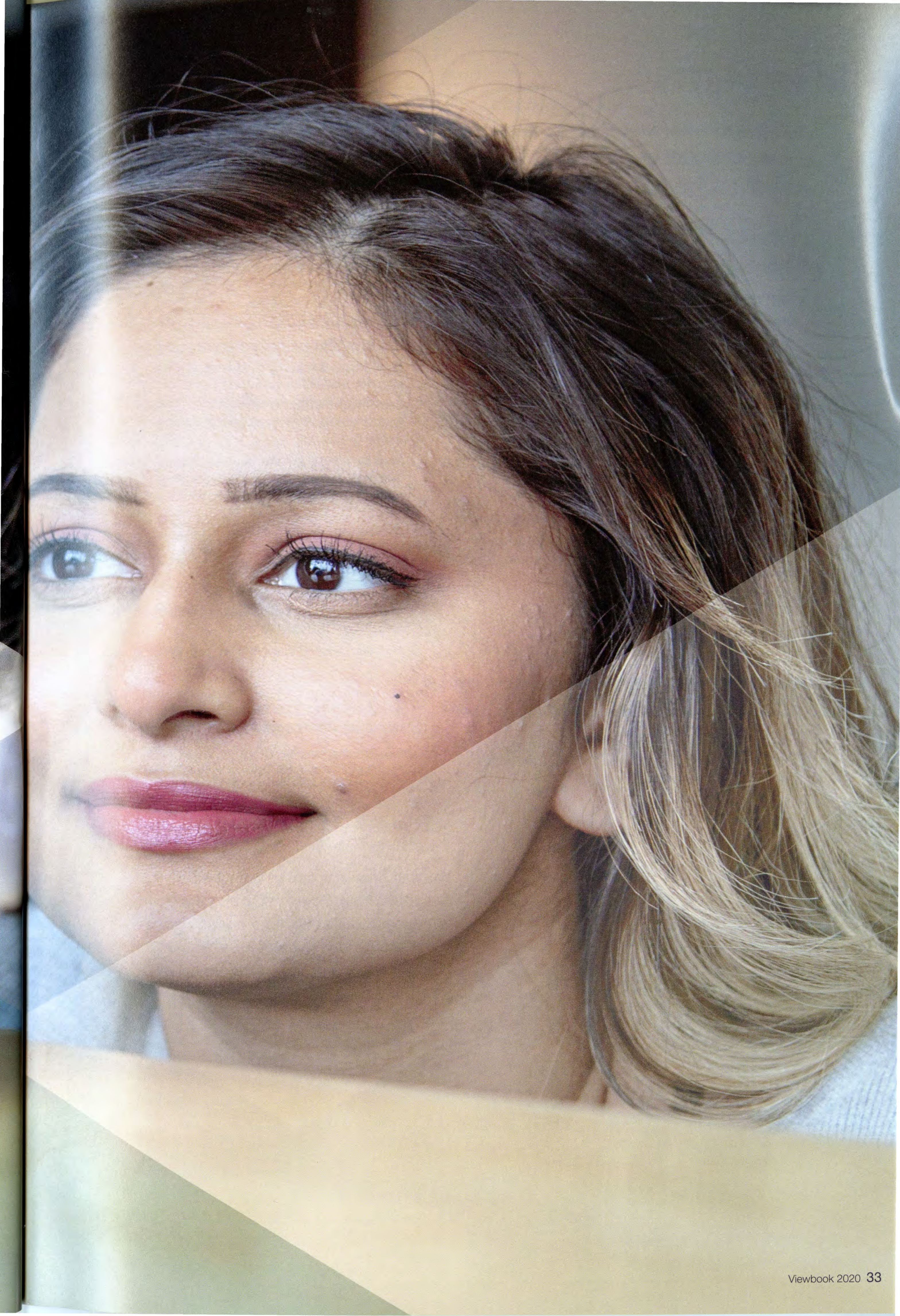


# Scholarships & Tuition

more

rewarding







# Rewards

Scholarships, bursaries and awards are a great way to support your educational expenses. Our Student Financial Services team can help you navigate your financial needs.

## Renewable Entrance Scholarship

**\$2,000–\$5,000**

- > High school applicants (Canadian citizen, permanent resident or protected person)
- > Automatically considered

### Entrance award levels (Year 1)

Scholarship	Final Admission Average
\$5,000	90% or above
\$4,000	85–89.9%
\$3,000	80–84.9%
\$2,000	75–79.9%

Successful applicants will receive an estimate of their entrance scholarship included in their offer of admission. Your official scholarship will be based on your final admission average.

### Renewal (Years 2, 3 & 4)

- > Renewable for three years after admission
- > Automatically considered for each renewal year

Scholarship Renewal Amount	Average in fall and winter semesters before year of renewal
\$3,000	90% or above
\$2,000	85–89.9%
\$1,000	80–84.9%

## Founders' Academic Merit Scholarship

**\$20,000**

- > 10 available each year
- > Minimum 90% admission average
- > Must demonstrate high academic achievement and superior leadership ability and potential
- > Each recipient eligible to receive \$5,000 per academic year over four years of full-time study for a total of \$20,000
- > Must be entering postsecondary studies for the first time. Apply online by February 28, 2020 at [guelphhumber.ca/futurestudents](http://guelphhumber.ca/futurestudents)

## Specialist High Skills Major Entrance Award

**\$1,000**

- > Must have completed an applicable Specialist High Skills Major (SHSM)\*
- > Minimum final admission average of 80%
- > High school applicants only
- > Automatically considered (but your guidance counsellor must confirm your SHSM has been completed when uploading your admission grade data)

\* Applicable SHSMs: Arts and Culture; Business; Health and Wellness; Information and Communications Technology; Justice, Community Safety & Emergency Services; Non-profit; Sports.

You can be a recipient of both the Founders' Academic Merit Scholarship and the Renewable Entrance Scholarship, for a possible total of \$34,000 over four years of full-time study!



UNIVERSITY OF  
**GUELPH**  
HUMBER

2019 05 14  
Y Y Y Y M M D D

PAY TO Lauren A.

AMOUNT OF twenty thousand dollars \$ 20 000

Founders' Academic Merit  
MEMO Scholarship

[Signature]  
SIGNED



## Registrar's Need-Based Entrance Bursary

**\$2,000**

- > Based on financial need
- > Available to applicants who have never attended postsecondary and are Canadian citizens, permanent residents or protected persons
- > Apply at [guelphhumber.ca/futurestudents](http://guelphhumber.ca/futurestudents) by April 15, 2020

## International Student Entrance Scholarship

**\$2,000–\$8,500**

- > Available to high school or transfer applicants who are not a Canadian citizen, permanent resident or protected person
- > Automatically considered
- > Grades converted to the Canadian equivalent to determine your final admission average, if applicable

## In-course awards

Check online at [guelphhumber.ca/futurestudents](http://guelphhumber.ca/futurestudents) to see our full range of awards:

- > Academic merit scholarships
- > Need-based bursaries
- > Community involvement scholarships
- > Volunteerism awards and scholarships
- > Leadership scholarships

## How to find additional funding

- > Research government programs, such as the Ontario Student Assistance Program ([ontario.ca/osap](http://ontario.ca/osap))
- > Look into scholarships offered by employers of your family and friends
- > Search online for websites that promote scholarships for postsecondary education based on a range of factors (not only academics)

**For full details and conditions for all of our entrance scholarships, bursaries and awards, please visit [guelphhumber.ca/futurestudents](http://guelphhumber.ca/futurestudents).**



**For a student population of 4,900 we allocate up to \$6.1 million annually for scholarships, awards and bursaries!**





# Tuition, Fees & Other Costs

University is an investment in your future. Knowing the costs can help you plan ahead and meet your goals.

## Domestic (Canadian) tuition and fees

Item	Each Semester	Total Academic Year
Business	\$4,255	\$8,511
All other programs	\$3,045	\$6,091
Student Fees (mandatory and optional fees)	\$470–\$526	\$940–\$1,052
<b>TOTAL</b>		
Business	\$4,725–\$4,781	\$9,451–\$9,563
All other programs	\$3,515–\$3,571	\$7,031–\$7,143

## International tuition and fees

Item	Each Semester	Total Academic Year
Business	\$13,355	\$26,710
All other programs	\$12,150	\$24,300
Student Fees (mandatory and optional fees)	\$470–\$526	\$940–\$1,052
International Health Insurance		\$420
<b>TOTAL</b>		
Business	\$14,245–\$14,301	\$28,070–\$28,182
All other programs	\$13,040–\$13,096	\$25,660–\$25,772

## Other expenses

Everyone's needs vary. Below is a list of estimated costs for education-related expenses. Use those that apply to you to help estimate your financial needs.

Item	Total Academic Year
Text	\$1,000
Parking Permit	\$418–\$578
Public Transit	\$992–\$1,200

## Residence

Item	Total Academic Year
Single-style Room	\$6,622
On-campus Meal Plan	\$2,350 (Regular) \$2,850 (Medium) \$3,400 (Large)

## Payment timeline

To help you spread the cost of tuition over the year, tuition is paid near the start of each semester.

*All values are estimates only based on 2019–20 rates and therefore subject to change. Other fees/costs may apply. For a complete list of fees, visit [guelphhumber.ca/futurestudents](http://guelphhumber.ca/futurestudents).*







# University of Guelph

IMPROVE LIFE.

The University of Guelph exists to Improve Life. Our faculty, staff and students alike are committed to it. So, the question to ask as you consider a postsecondary education at one of Canada's leading comprehensive universities is a simple one: How do you hope to improve life after you graduate?

Going to university isn't just about getting a degree or a job. It's also about coming into your own as a person. That's what it means to join us as a Gryphon. The academics? First-rate and intriguing. The professors? Powerful and thought-provoking. Your fellow students? The most wonderful, good-natured people you'll ever share a wood-oven pizza with. And the atmosphere? Like being part of a community that you make complete. Everything is connected to improving the lives and careers of our students and 173,000+ alumni worldwide and, in turn, improving life on this planet.

## Degree Programs

- > Bachelor of Applied Science
- > Bachelor of Arts
- > Bachelor of Arts and Sciences
- > Bachelor of Bio-Resource Management
- > Bachelor of Commerce
- > Bachelor of Computing
- > Bachelor of Engineering
- > Bachelor of Landscape Architecture
- > Bachelor of Science
- > Bachelor of Science in Agriculture
- > Bachelor of Science in Environmental Sciences
- > Doctor of Veterinary Medicine

## Careers

University of Guelph graduates are doctors, engineers, researchers, marine biologists, technology developers, marketers, agri-producers, food technologists, restaurant owners, not-for-profit world changers, CPAs, MBAs, football players, registered nurses, dietitians, teachers, artists and writers, Olympians, entrepreneurs, scientists, and good people living good lives in Canada and around the world.

## Campus Experience

Over 20,000 full-time students choose U of G every year. Over 3,500 of them choose co-op programs, 16,000+ participate in intramural sports and lifestyle programs at our outstanding facilities, and every first-year student is guaranteed residence\* with a variety of options. The U of G campus experience always ranks among Canada's best – and even our food service is ranked #1 (again).

*\* Residence is guaranteed for all semester one students provided they apply and submit their \$750 deposit by June 1, 2020.*

## Location

Located less than 40 minutes west of the GTA just off the 401: The City of Guelph, population 133,000+, is ranked among the best places to live and work in Canada, boasts a beautiful downtown and supports an outstanding, active lifestyle. Express GO Bus access into and out of the GTA is available on campus.

## How to Apply

All applicants can begin their applications in early October 2019. The online form is available at [ouac.on.ca](http://ouac.on.ca).

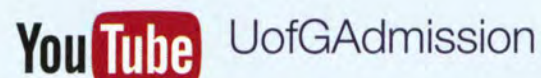
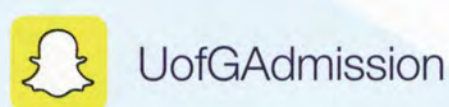
Canadian high school students are encouraged to apply by **January 15, 2020** to be considered for all rounds of admission. Transfer and international students should visit [admission.uoguelph.ca](http://admission.uoguelph.ca) for specific application deadlines.

## Book a Tour Today!

519.824.4120 ext. 58712

[admission.uoguelph.ca/tours](http://admission.uoguelph.ca/tours)

## Follow and add us, #futuregryphon







# Application & Admission Requirements



## Choose your applicant type

Applicant Type	Description	Details	Application Deadline
Ontario High School (101 application)	You attended high school full-time in Ontario in 2019–20 and have not completed any postsecondary studies.	Refer to page 42	January 15, 2020
Out of Province High School (105 application)	You are currently attending a high school in Canada, outside of Ontario, on a full-time basis and have not completed any postsecondary studies.	Refer to page 44	January 15, 2020
International (105 application)	You currently reside outside of Canada, and you are not a Canadian citizen or permanent resident, and you are not currently attending an Ontario high school day program (in Ontario or abroad).	Refer to page 46	March 1, 2020
High School Graduate (105 application)	You graduated from high school and have completed six 4U/M courses.	Refer to page 45	January 15, 2020
Mature (105 application)	You graduated from high school more than two years ago without completing six 4U/M courses.	Refer to page 45	January 15, 2020
Home-schooled (105 application)	You have been home-schooled for grade 11 and 12 in Canada.	Refer to our website	January 15, 2020
Transfer (105 application)	You have attended a recognized university or college.	Refer to page 43	Dates vary



# Applicant Types & Definitions

Select your applicant type based on your education (page 39). For each applicant type, admission requirements may vary.

**Admission average:** For high school applicants, your admission average is calculated using your top six 4U/M courses (or equivalent), including your subject requirements. This average is calculated using the most current grade data available to us through the admission process.

**Admission average estimated cut-off range:** Estimated cut-off ranges are based on the admission averages from previous years and are provided solely as a point of reference. Exact cut-offs for the current cycle will be determined by the quantity and quality of applications received and the number of places available in the respective program. Admission to the University of Guelph-Humber can be competitive. Possession of an admission average within the estimated cut-off range does not guarantee an offer of admission.

## Admission (Offers) Timeline

Date	Basis of Calculation
January/February	Top six completed 4U/M (or equivalent) courses, including subject requirements. Where six 4U/M courses are not available, completed 3U/M courses, including subject requirements, will be used.
March/April	Top six completed 4U/M (or equivalent) courses, including subject requirements. Where not available, a combination of the top six completed or in-progress 4U/M and completed 3U/M courses, including subject requirements, will be used.
May	Top six completed or in-progress 4U/M (or equivalent) courses, including subject requirements, will be used.

*Some applicants may receive an offer in December. In most cases, early offers will be sent to applicants whose admission average far exceeds the estimated cut-offs. All applicants will receive an admission decision by May 27, 2020.*

**Repeated courses, summer school, night school and correspondence:** The University will use the highest grade reported for grade 12 courses taken at a Ministry-approved school prior to June 2020, regardless of format.

**Deferrals:** Considered on a case-by-case basis for high school applicants. Please contact Admission Services.

**English language requirements:** You will be required to provide proof of English proficiency if English is not your first language and you have studied less than four years in an English language school (minimum high school level). Please refer to the chart (right) for acceptable tests and scores. Test results must be less than two years prior to your application.

Test	Minimum Required Score
CAEL	Minimum overall band score of 70.
Cambridge English C1 Advanced and C2 Proficiency.	Minimum overall score of 176 with no band less than 169.
IELTS	Minimum overall score of 6.5 with no band less than 6.
MELAB	Minimum overall score of 85 including composition score of 83 and oral score of 3.
PTE	Minimum overall score of 60 with no score less than 60 in the individual components.
TOEFL	Internet-based: minimum total score of 89 with no individual scaled score less than 21.

Institutional code is 0892.

Successful completion of the University of Guelph, Open Learning Advanced Level of the English Language Certificate Program (Levels 9 and 10) is considered an acceptable form of proving your English proficiency. Visit [guelphhumber.ca/futurestudents/english-language-requirements](http://guelphhumber.ca/futurestudents/english-language-requirements) for details.

## Advanced Placement (AP)

Advanced Placement exam results of four or more may qualify for university credit to a maximum of 2.0 credits (four courses). Official transcripts are required.

## International Baccalaureate (IB)

If you are applying with an IB diploma, you should present a minimum academic score of 24. Reported bonus points will be taken into consideration. You should complete the diploma with six subjects: three higher level and three standard level. You should also include the specific subject requirements for the program to which you are applying among your higher and standard levels. Please note that any Higher Level or Standard Level mathematics course is an acceptable prerequisite for programs that require math. You should ensure that your predicted scores are submitted using the seven-point scale. You are eligible to receive a maximum of 2.0 credits for grades of 5 or better on higher level courses.

**Ontario high school applicants:** Ontario high school students registered in an IB program will automatically have their IB courses converted into Ontario U- and M-level equivalents. IB scores will be converted into percentage grades by your high school. Admission and scholarships will be determined using the conversions as submitted. You are eligible to receive a maximum of 2.0 credits for grades of 5 or better on higher level courses.



# How to Apply at ouac.on.ca

## Applicants using the 101 application

### 1. Check admission requirements

Verify your admission requirements for your program of interest on page 42.

### 2. Apply online by the deadline

Go to the Ontario Universities' Application Centre (OUAC) website, [ouac.on.ca](http://ouac.on.ca), to complete your application by **January 15, 2020** for early consideration. The OUAC website provides you with video tutorials about how to apply, FAQs and other resources.

#### Getting started

You will be given an OUAC PIN from your guidance counsellor to use when applying online.

#### If you select more than one program at UofGH

If you apply to more than one program at the University of Guelph-Humber, you will be considered for all programs to which you apply. You are encouraged to list your program choices in order of preference. If you wish to change the order of your UofGH application choices after submitting your application, you must do so through the OUAC before April 15, 2020.



## After You Apply

#### Check your email!

Shortly after you apply, you will receive a confirmation email from the University acknowledging your application and linking you to more information about what comes next.

#### Offers of admission

If you receive an offer of admission, the offer will appear on your OUAC account and you will receive an email and offer package in the mail from the University. To accept your offer, do so online at [ouac.on.ca](http://ouac.on.ca) by **June 1, 2020**.

## Applicants using the 105 application

### 1. Check admission requirements

Verify your admission requirements for your program of interest based on your applicant type.

### 2. Apply online by the deadline

Go to the Ontario Universities' Application Centre (OUAC) website, [ouac.on.ca](http://ouac.on.ca), to complete your application by the respective deadline. The OUAC website provides you with video tutorials about how to apply, FAQs and other resources.

#### Getting started

You will create a user profile on [ouac.on.ca](http://ouac.on.ca) to start the application process.

#### If you select more than one program at UofGH

If you apply to more than one program at the University of Guelph-Humber and you have never attended postsecondary studies, you will be considered for all programs to which you apply. You are encouraged to list your program choices in order of preference. If you wish to change the order of your UofGH application choices, you must do so through the OUAC before April 15, 2020.

If you are a transfer applicant (i.e., have attended any postsecondary study) and you apply to more than one program at the University of Guelph-Humber, you can expect to receive only one offer of admission from the University. The highest ranked choice will be considered first. Only in the event that you are not admissible to your highest choice will your next choice be considered. If you want to reorder your UofGH program rankings, please amend your application on the OUAC website.



#### Check your email!

You will receive a confirmation email and a login and password to WebAdvisor, our online student administration system. Your WebAdvisor account lists the documents we require for admission consideration and the submission deadlines.

#### Transcripts and other documents

You will be required to submit transcripts. Other documents may also be required. Check your WebAdvisor account for details.

#### Offers of admission

If you receive an offer of admission, the offer will appear on your OUAC account and you will receive an email and offer package in the mail from the University. To accept your offer, do so online at [ouac.on.ca](http://ouac.on.ca) by the deadline in your offer letter.



# Ontario High School Applicant Admission Requirements

To be considered for admission, you must:

- > Be a full-time student completing your Ontario Secondary School Diploma (OSSD) in 2019–20, and
- > Be completing six 4U/M courses, including the subject requirements noted in the chart below. These will be used to calculate your admission average.

Program	OUAC Code	Subject Requirements	Estimated Cut-off Range
Business	GDB	> ENG4U > any 4U math > four additional 4U/M courses	75–80%
Early Childhood Studies	GHE	> ENG4U > five additional 4U/M courses	75–80%
Family and Community Social Services	GHF	> ENG4U > five additional 4U/M courses	75–80%
Justice Studies	GMP	> ENG4U > five additional 4U/M courses	75–80%
Kinesiology	GHK	> ENG4U > any 4U math > any two from SBI4U, SCH4U, SPH4U or PSK4U > two additional 4U/M courses	75–80%
Media Studies	GMT	> ENG4U > five additional 4U/M courses	75–80%
Psychology	GMA	> ENG4U > five additional 4U/M courses	75–80%

Please note: (a) The non-academic component of 4U/M co-op courses is not considered for admission requirements. (b) Courses valued at 1.5 credits or greater will be considered equivalent to one credit. (c) The University will only accept courses approved by the Ministry of Education.

**Grades:** Your grades will automatically be sent to the University as data is received by the OUAC.

**Student Profile** (optional supplemental information): The Student Profile (SP) is your opportunity to tell us about factors that may have impacted your grades. If your admission average does not meet the cut-off for the program to which you have applied, your SP may be considered if your average is within a discretionary range of the determined cut-off range (up to 5%). If you have an admission average of 70–74.9%, it is strongly recommended that you submit a SP to be considered for admission. Profiles must be completed online at [guelphhumber.ca/futurestudents](http://guelphhumber.ca/futurestudents) and are due **May 1, 2020**.

**Supplementary Information Form for Students with Disabilities** (optional supplemental information):

The University of Guelph-Humber strives to provide equal opportunity for academically qualified students with disabilities. If you believe that your admission average does not reflect your true academic ability as a result of a disability, you are encouraged to complete the Supplementary Information Form for Students with Disabilities (SIF-D) available online at [guelphhumber.ca/futurestudents](http://guelphhumber.ca/futurestudents). It will be considered along with your marks in determining admission. If you have an admission average of 70–74.9%, it is strongly recommended that you submit a SIF-D to be considered for admission. The deadline is **May 1, 2020**.

**Advanced Placement and International Baccalaureate:** Page 40.

**English language requirements:** Page 40.

**Admission timeline:** Refer to chart on page 40.

Please note: Documents submitted in support of an application become the property of the University and will not be returned. Documents are protected under provincial privacy legislation.

## Important Deadlines

Application deadline: **January 15, 2020**

Student Profile/SIF-D deadline: **May 1, 2020**

Deadline to accept your offer: **June 1, 2020**



# Transfer Applicant Pathways

Explore our transfer pathways for applicants with previous college or university education. All of our offers of admission include a Transfer Credit Assessment so you know at the time of acceptance how much transfer credit you will receive.

For a complete breakdown of program information and deadlines, please visit [guelphhumber.ca/futurestudents](http://guelphhumber.ca/futurestudents) or request a copy of our printed **2020 Transfer Applicant Guide**.

## College Block Credit Transfer Pathways

Our college block credit transfer pathways allow you to move seamlessly with your college diploma into our honours degree programs. Please view the chart below to determine which diplomas will reduce your time towards your degree!

This is a great option if:

- > You are in your final year of diploma completion or have a completed diploma from an Ontario college, and
- > Your diploma is granted by a recognized institution, and
- > You have a minimum cumulative average of 75%

Program	Eligible Diploma/Pathway	Format	Block Credit	Entry
Business	Accounting; Business Administration; Finance; Management; Management and Entrepreneurship; or Marketing	Full-time, on campus	Up to 5.0 credits granted for 2-year diploma Up to 10.0 credits granted for 3-year diploma	Fall
Early Childhood Studies	Early Childhood Education	Full-time, on campus Part-time, fully online	10.0 credits granted for 2-year diploma	Fall
Family and Community Social Services	Child and Youth Care; Developmental Services Worker; or Social Service Worker	Full-time, on campus Part-time, fully online Part-time, hybrid	10.0 credits granted for 2- or 3-year diploma	Fall
Justice Studies	Paralegal	Full-time, on campus	Up to 5.0 credits granted for 2-year diploma	Fall
	Community and Justice Services; Law and Security Administration; Police Foundations; or Protection, Security and Investigation	Full-time, on campus	10.0 credits granted for 2-year diploma	
Kinesiology	Fitness and Health Promotion; or Health, Wellness and Fitness	Full-time, on campus	5.0 credits granted for 2-year diploma	Spring
Media Studies	Advertising and Marketing Communications/ Management; Broadcasting; Digital Communications; Image Arts/Photography; Journalism; Media Communications; or Public Relations	Full-time, on campus	Up to 5.0 credits granted for 2-year diploma Up to 10.0 credits granted for 3-year diploma	Fall
Psychology	General Arts and Science	Full-time, on campus	Up to 5.0 credits granted for 2-year diploma	Fall

### Transfer credit:

- > Approximately 1 year of full-time study or 10 courses are equivalent to 5.0 credits
- > Approximately 2 years of full-time study or 20 courses are equivalent to 10.0 credits

## General Transfer Pathway

If you have a degree, diploma or coursework from a college or university not referenced in the chart above, you may be eligible for admission and transfer credit into one of these four programs:

- > Business
- > Justice Studies
- > Media Studies
- > Psychology

Your completed postsecondary coursework will be assessed for relevance and credit awarded where applicable.

*Note: If you have both college and university coursework, then you should speak with Admission Services regarding admission requirements and transfer credit assessment.*



# Out of Province High School Applicant Admission Requirements

To be considered for admission, you must:

- > Be completing your secondary school diploma, and
- > Meet the respective admission requirements for your province/territory, including subject requirements (BC, AB and MB see chart below; other provinces please visit [guelphhumber.ca/futurestudents](http://guelphhumber.ca/futurestudents))

	British Columbia	Alberta	Manitoba
Admission Requirements	> five acceptable academic grade 12 courses, inclusive of subject requirements	> five courses numbered 30 or 31 with weight of 5, inclusive of subject requirements	> five full credits at senior level 4, with a minimum of three 40S courses, inclusive of subject requirements
Program and OUAC Code	Subject Requirements	Subject Requirements	Subject Requirements
Business (GDB)	> English 12 > one of Pre-Calculus 12, Calculus 12 or Foundations of Math 12	> English 30-1 > one of Math 30-1, Math 30-2 or Math 31	> English Language Arts 40S > one of Pre-Calculus 40S, Calculus 45A or 45S, or Applied Math 40S
Early Childhood Studies (GHE)	> English 12	> English 30-1	> English Language Arts 40S
Family and Community Social Services (GHF)	> English 12	> English 30-1	> English Language Arts 40S
Justice Studies (GMP)	> English 12	> English 30-1	> English Language Arts 40S
Kinesiology (GHK)	> English 12 > one of Pre-Calculus 12, Calculus 12 or Foundations of Math 12 > any two from Anatomy 12/ Biology 12/ Physiology 12, Chemistry 12 or Physics 12	> English 30-1 > one of Math 30-1, Math 30-2 or Math 31 > any two from Biology 30, Chemistry 30 or Physics 30	> English Language Arts 40S > one of Pre-Calculus 40S, Calculus 45A or 45S, or Applied Math 40S > any two from Biology 40S, Chemistry 40S or Physics 40S
Media Studies (GMT)	> English 12	> English 30-1	> English Language Arts 40S
Psychology (GMA)	> English 12	> English 30-1	> English Language Arts 40S

## Admission average estimated cut-off range:

The estimated cut-off range for all programs is 75–80%. For more information refer to page 40.

## Student Profile (optional supplemental information):

The Student Profile (SP) is your opportunity to tell us about factors that may have impacted your grades. If your admission average does not meet the cut-off for the program to which you have applied, your SP may be considered if your average is within a discretionary range of the determined cut-off range (up to 5%). If you have an admission average of 70–74.9%, it is strongly recommended that you submit a SP to be considered for admission. Profiles must be completed online at [guelphhumber.ca/futurestudents](http://guelphhumber.ca/futurestudents) and are due **May 1, 2020**.

## Supplementary Information Form for Students with Disabilities (optional supplemental information):

The University of Guelph-Humber strives to provide equal opportunity for academically qualified students with disabilities. If you believe that your admission average does not reflect your true academic ability as a result of a disability, you are encouraged to complete the Supplementary Information Form for Students with Disabilities (SIF-D) available online at [guelphhumber.ca/futurestudents](http://guelphhumber.ca/futurestudents). It will be considered along with your marks in determining admission. If you have an admission average of 70–74.9%, it is strongly recommended that you submit a SIF-D to be considered for admission. The deadline is **May 1, 2020**.

**Transcripts:** Please have your high school Guidance Counsellor or School Administrator email your official transcript by **April 15, 2020** to [admissions@guelphhumber.ca](mailto:admissions@guelphhumber.ca) for admission consideration. Your transcript must include grades for all completed and in-progress grade 11 and 12 courses. Transcripts from British Columbia schools are automatically sent electronically, but they will not arrive in time for our admission decision; therefore, BC students should email [admissions@guelphhumber.ca](mailto:admissions@guelphhumber.ca) self-reported grades no later than April 15, 2020.

**Advanced Placement and International Baccalaureate:** Please refer to page 40.

**English language requirements:** Page 40.

**Admission timeline:** Refer to chart on page 40.

*Please note: Documents submitted in support of an application become the property of the University and will not be returned. Documents are protected under provincial privacy legislation.*

## Important Deadlines

Application deadline: **January 15, 2020**

Transcript deadline: **April 15, 2020**

Student Profile/SIF-D deadline: **May 1, 2020**

Deadline to accept your offer: **June 1, 2020**



# High School Graduate Applicant Admission Requirements

To be considered for admission, you must:

- > Have graduated from a Canadian high school, and
- > Have not completed any postsecondary studies, and
- > Have completed six or more 4U/M courses (or equivalent)

**Admission requirements:** Ontario applicants please refer to the chart on page 42. Out of province applicants please refer to the admission requirements on page 44 or on [guelphhumber.ca/futurestudents](http://guelphhumber.ca/futurestudents).

**Admission average estimated cut-off range:**  
The estimated cut-off range for all programs is 75–80%. For more information refer to page 40.

**Transcripts and documents:** You must arrange to have your high school transcript and any other required documents sent to Admission Services by **April 15, 2020**.

Certain high schools in Ontario allow you to request your official high school transcript electronically from the Transcript Request section in the 105 online application. If your high school is not included in this service, you need to contact your high school to arrange for your official transcript to be sent directly to us. Please ask the school to include your OUAC Reference Number on your transcript.

**Student Profile** (optional): Please refer to page 42.

**Supplementary Information Form for Students with Disabilities** (optional supplemental information): Please refer to page 42.

**Advanced Placement and International Baccalaureate:** Please refer to page 40.

**English language requirements:** Please refer to page 40.

**Admission timeline:** Refer to chart on page 40.

*Please note: Documents submitted in support of an application become the property of the University and will not be returned. Documents are protected under provincial privacy legislation.*

## Important Deadlines

Application deadline: **January 15, 2020**

Transcript deadline: **April 15, 2020**

Student Profile/SIF-D deadline: **May 1, 2020**

# Mature Applicant Admission Requirements

To be considered a mature applicant, you must:

- > Have completed an Ontario Secondary School Diploma (or equivalent), and
- > Be out of high school for more than two years, and
- > Be unable to present six completed 4U/M courses (or equivalent), and
- > Not have completed any postsecondary studies

**Admission requirements:** Your admission average will be calculated using a minimum of three 4U/M courses (or equivalent), including program-specific requirements which can be found at [guelphhumber.ca/futurestudents/mature-apply](http://guelphhumber.ca/futurestudents/mature-apply).

**Transcripts:** You must arrange to have your high school transcript and any other required documents sent to Admission Services by **April 15, 2020**. Certain high schools in Ontario allow you to request your official high school transcript electronically from the Transcript Request section in the 105 online application. If your high school is not included in this service, you need to contact your high school to arrange for your official transcript to be sent directly to us. Please ask the school to include your OUAC Reference Number on your transcript.

Sealed transcripts from the originating institution should be delivered to:

Admission Services, University of Guelph-Humber  
207 Humber College Blvd  
Toronto, ON M9W 5L7

**Student Profile** (optional): Please refer to page 42.

**Supplementary Information Form for Students with Disabilities** (optional supplemental information): Please refer to page 42.

**English language requirements:** Please refer to page 40.

**Other documents:** You are encouraged to write a letter explaining your activities since your last academic semester to be considered by the Admission Committee with your application.

**Admission timeline:** Refer to chart on page 40.

*Please note: Documents submitted in support of an application become the property of the University and will not be returned. Documents are protected under provincial privacy legislation.*

## Important Deadlines

Application deadline: **January 15, 2020**

Transcript deadline: **April 15, 2020**

Student Profile/SIF-D deadline: **May 1, 2020**



# International Secondary School Applicant Admission Requirements

To be considered an international applicant:

- > You currently reside outside of Canada, and
- > You are not a Canadian citizen or permanent resident, and
- > You are not currently attending an Ontario high school day program (in Ontario or abroad)

*Canadians studying outside of Canada, please contact Admission Services.*

**Admission requirements:** You are individually assessed based on the country where you completed your secondary school studies. Please check your country-specific requirements at [guelphhumber.ca/futurestudents](http://guelphhumber.ca/futurestudents). Your grades will be converted to the Canadian equivalent for admission consideration.

**Subject requirements:** You should include among your senior level courses, the following subject-specific requirements at the advanced level.

Program	Subject Requirements
Business	Senior level English Senior level math
Early Childhood Studies	Senior level English
Family and Community Social Services	Senior level English
Justice Studies	Senior level English
Kinesiology	Senior level English Senior level math Any two from science, chemistry, biology or physics
Media Studies	Senior level English
Psychology	Senior level English

**Documents:** Please have your Guidance Counsellor or School Administrator email your official transcript by **March 1, 2020** to [admissions@guelphhumber.ca](mailto:admissions@guelphhumber.ca) for admission consideration. Your transcripts must include grades for all completed and current senior level courses. You will need to arrange to have your final official transcripts sent from your school or through a credential verification organization (e.g., Parchment, World Education Services) to Admission Services. Transcripts can be sent electronically or submitted in a sealed envelope from the originating institution.

Our address is: Admission Services  
University of Guelph-Humber  
207 Humber College Blvd  
Toronto, ON M9W 5L7

**Student Profile** (optional): Please refer to page 42.

**Advanced Placement and International Baccalaureate:** Please refer to page 40.

**English language requirements:** Please refer to page 40.

*Please note: Documents submitted in support of an application become the property of the University and will not be returned. Documents are protected under provincial privacy legislation.*

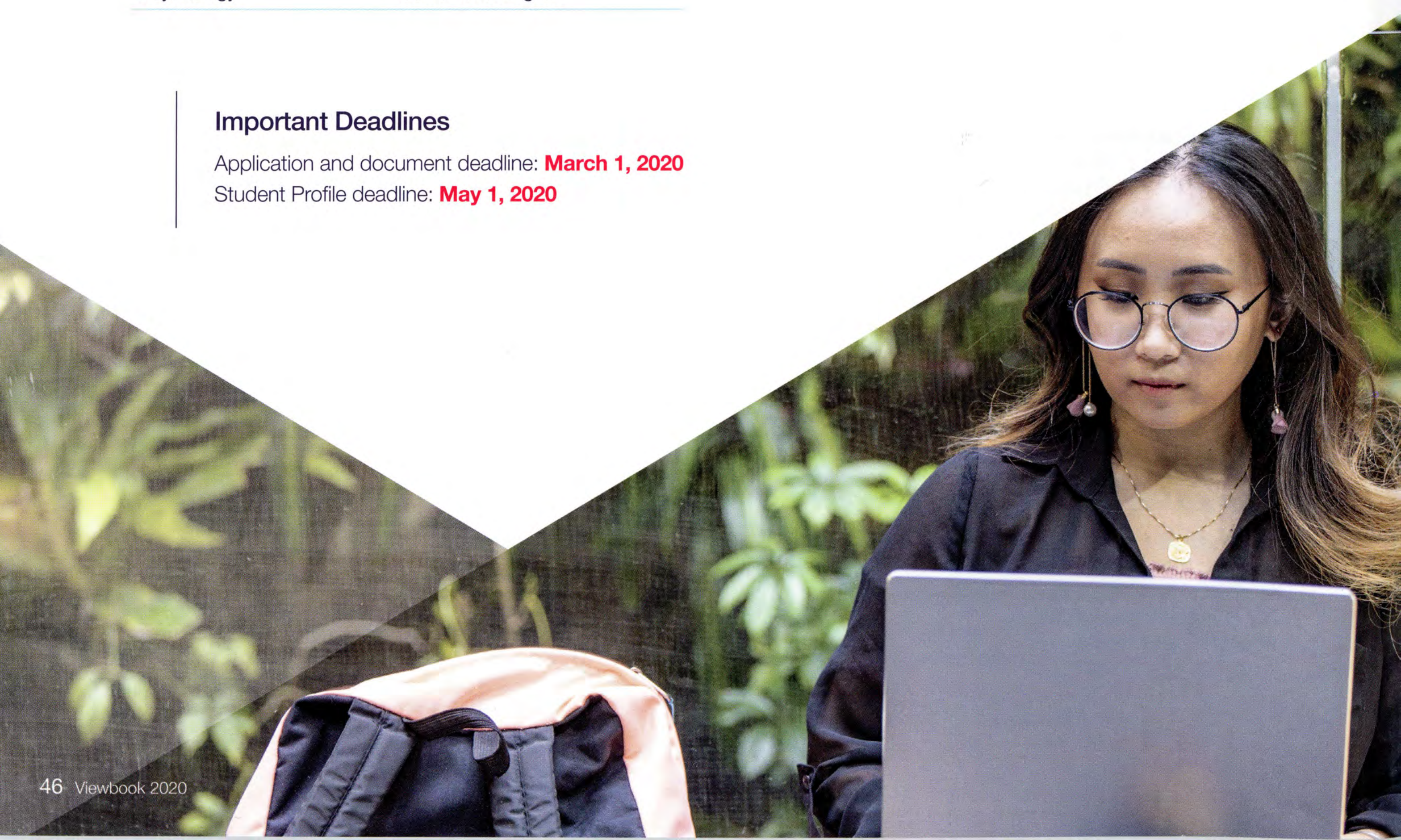
**Special note:** As an international applicant, you have three options for applying online.

1. Ontario Universities' Application Centre, [ouac.on.ca](http://ouac.on.ca)
2. The Common App, [commonapp.org](http://commonapp.org)
3. Through our website, [guelphhumber.ca/futurestudents/international-apply](http://guelphhumber.ca/futurestudents/international-apply) (if applying to only one Ontario university)

## Important Deadlines

Application and document deadline: **March 1, 2020**

Student Profile deadline: **May 1, 2020**





# More to See: Tours & Events

Experience the campus for yourself. Meet students and professors, and get all the details you need!

## Campus tours

- > Start your campus visit at The Centre for Future Students
- > Led by current students
- > Available throughout the year
- > Check our schedule online to book your visit

For full details on all of our events and tours, and to register, visit [guelphhumber.ca/visitus](http://guelphhumber.ca/visitus).

## Events

### Fall Information Day – November 10, 2019

Learn about the University, your program of interest, speak with program heads and campus services representatives, tour campus and more.

### Money Matters Webinar – November 27, 2019 & April 22, 2020

Learn more about our scholarships and bursaries, and how to apply to OSAP. (Note: This is an online event.)

### Program Preview Day:

#### Business and Media Studies – March 1, 2020

Information sessions hosted by our faculty, current students and alumni.

### March Break Tours – March 16–21, 2020

Led by current University of Guelph-Humber students.

### Program Preview Day: Applied Sciences – March 29, 2020

Discover our Early Childhood Studies, Family and Community Social Services, Justice Studies, Kinesiology and Psychology programs by joining us on campus for information sessions hosted by our faculty, current students and alumni.

### Next Steps – May 21 & 28, 2020

To help you with any remaining questions. Information sessions on next steps to becoming a student.

## UNIVERSITY OF GUELPH HUMBER

University of Guelph-Humber  
207 Humber College Blvd  
Toronto, ON M9W 5L7

[info@guelphhumber.ca](mailto:info@guelphhumber.ca)  
416.798.1331 ext. 6056





# UNIVERSITY OF GUELPH HUMBER

FORWARD THINKING,  
PRACTICAL EXPERIENCE.

University of Guelph-Humber  
207 Humber College Blvd  
Toronto, ON M9W 5L7



## Questions? Contact us

[guelphhumber.ca/futurestudents](http://guelphhumber.ca/futurestudents)  
[info@guelphhumber.ca](mailto:info@guelphhumber.ca)

416.798.1331 ext. 6056



zerofootprint®

*The University of Guelph-Humber makes every effort to ensure the information contained herein is as current and accurate as possible. The University reserves the right to make changes to policies, programs and services described in this publication without prior notice.*

*This document is available in alternative formats on request.*

