

UNIVERSITY OF
GUELPH
HUMBER

Toronto, ON



FORWARD THINKING, | 2017
PRACTICAL EXPERIENCE.

Inside

THINK DIFFERENT _____ 1

EXPERIENCE SUCCESS _____ 3



EXPERIENCE
THE POSSIBILITIES _____ 6

BUSINESS _____ 8

**EARLY CHILDHOOD
STUDIES** _____ 10

**FAMILY AND COMMUNITY
SOCIAL SERVICES** _____ 12

JUSTICE STUDIES _____ 14

KINESIOLOGY _____ 16

MEDIA STUDIES _____ 18

PSYCHOLOGY _____ 20



EXPERIENCE SUPPORT _____ 24



THINK CONNECTED _____ 26



EXPERIENCE COMMUNITY _____ 28



THINK ACTIVE _____ 29



EXPERIENCE HOME _____ 30



THINK LOCAL(E) _____ 31



EXPERIENCE REWARD _____ 34



THINK INVESTMENT _____ 36

UNIVERSITY OF GUELPH _____ 37

ADMISSION INFORMATION _____ 38



THINK AHEAD:
MARK YOUR CALENDAR! _____ 48

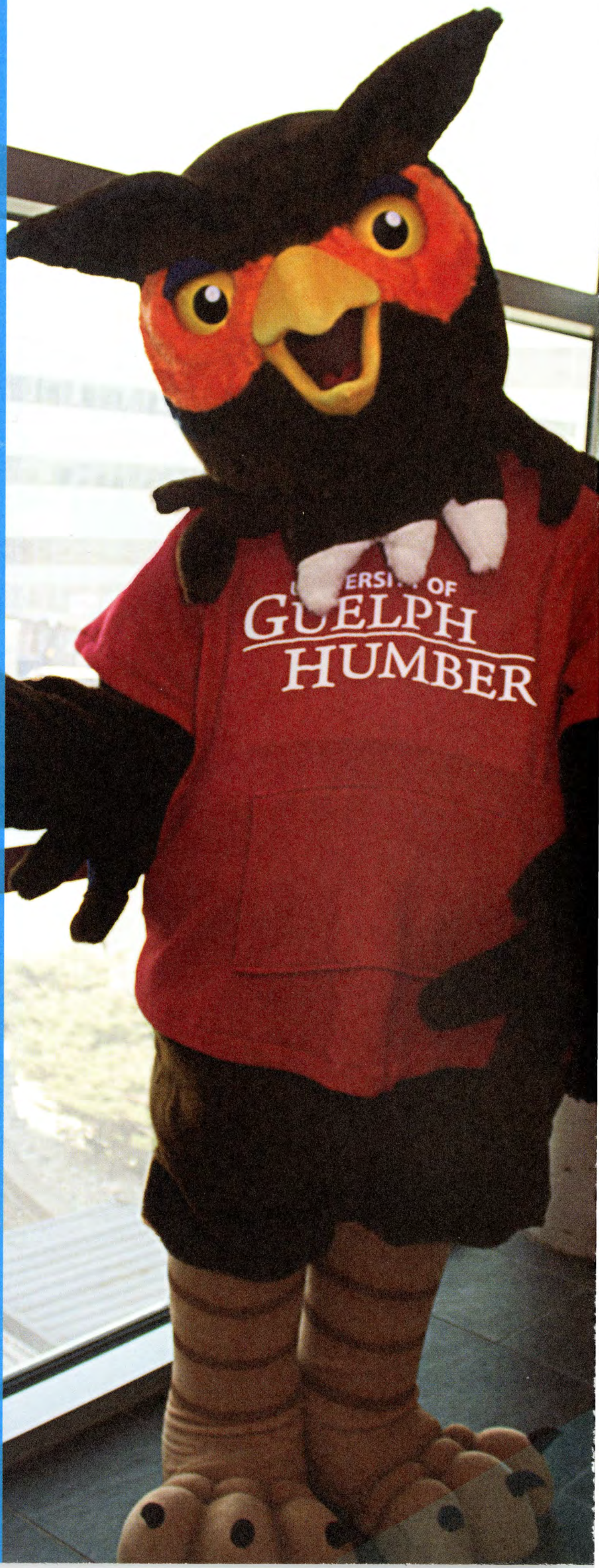


EXPERIENCE FIRST-HAND _____ 49

OUR FOUNDING PARTNERS:

The University of Guelph is ranked as one of Canada's top comprehensive universities.

Humber College Institute of Technology & Advanced Learning is Canada's largest college.



WHO WE ARE

The **University of Guelph-Humber** is a collaboration between the University of Guelph and Humber College Institute of Technology & Advanced Learning (Humber). Our programs draw from the expertise and knowledge of both renowned institutions. We were the first in Ontario to offer an innovative approach to postsecondary education, providing students with an opportunity to earn both a university honours degree and diploma in four years of full-time study in one location. Now, almost 15 years later, we continue to stand out from the crowd.

What makes us unique, and what you will value most, is the integration of theory and practical education in all of our programs. We are the only Ontario university to offer this. It's an intensive, immersive approach that attracts students who are highly motivated and goal-oriented.

When you graduate from the University of Guelph-Humber, you will have:

- > An honours degree granted by the University of Guelph.
- > A diploma granted by Humber.
- > A focus on your career or further studies.
- > Practical experience.

YOU ARE

A student who is **highly motivated** and **goal-oriented**. Choose us, **if you want:**

- > A university education.
- > To learn in a culturally diverse environment.
- > To do, not just know.
- > A meaningful career in your field.

THINK DIFFERENT



Our partnership

A **COLLABORATION** between
UNIVERSITY OF GUELPH & HUMBER



2 credentials

EARN AN HONOURS
DEGREE + DIPLOMA
concurrently, in 4 years



Focused programs

INTEGRATION & PRACTICAL
of **THEORY & education**
AN INTENSIVE, IMMERSIVE APPROACH



Industry connections

EVERY PROGRAM HAS
WORKPLACE
EXPERIENCE



Close-knit community

With a **POPULATION OF 4,750**
OUR AVERAGE CLASS SIZE IS
49 STUDENTS



1 location

STUDY IN OUR
INNOVATIVE FACILITY IN
T O R O N T O





By the Numbers

- ▶ More than 82% of first-year students received entrance scholarships in 2016-17.
- ▶ Students spent more than 1/2 million hours in one year on placements and internships.
- ▶ Our students have won more than 120 awards and competitions in the last four years!



EXPERIENCE SUCCESS

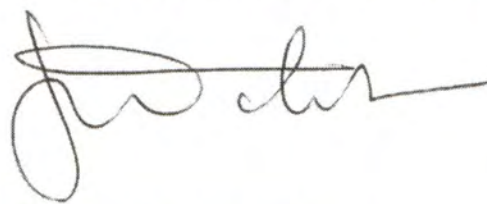
Selecting a university that's right for you is one of the most significant life decisions you will make. It takes careful consideration of what you want to accomplish. I invite you to visit us to see the campus, meet current students and faculty, and imagine yourself growing and learning as part of our close-knit community.

Choosing the University of Guelph-Humber means earning both a university honours degree and a diploma in four years of full-time study. If you want to be challenged academically and apply that knowledge while studying, we are the right choice for you. By earning two credentials, you will be better prepared to either move into the workforce or further study.

Your success is not just about earning two credentials in four years: it's about taking those credentials and moving forward. For 14 years, the University of Guelph-Humber has fostered student success. You will see many examples of success from our current students and alumni throughout this Viewbook.

Our unique, integrated curriculum will have you learning inside and outside the classroom. Our small classes allow you to study in a community where your professors know your name, ideas are shared and you build networks before you graduate.

As you take the next step forward and begin your new journey, know that you are not alone. We are committed to helping you achieve your goals and making your years at the University of Guelph-Humber full of memories that will last a lifetime.



Dr. John Walsh
Vice-Provost, University of Guelph-Humber

7 Focused Programs



"Guelph-Humber students demonstrate the mix of critical thinking skills and hands-on experience that employers look for these days. It's that kind of entrepreneurial outlook that will serve them well in a changing job market that demands self-starting individuals who show up ready to learn and contribute."

> Brandie Weikle, Thousand Families Media Inc.





EXPERIENCE THE POSSIBILITIES

Focused curriculum

Your courses will be focused: curriculum that challenges you academically and demands hands-on experience as you learn. More content targeted to your area of study with only a select number of general electives prepares you for your future career. We continue to be innovators with workplace experience an important part of every program.

Experts in the field

Our faculty are experts in their field, keeping one foot in the classroom and one in the workplace and/or research to offer you real-world experience and connect you to professionals. Examples include:

- > Glen Selkirk, a professor in our Kinesiology program, researches the fitness and health of Ontario firefighters. As the Managing Director of the First Responder Prevention and Wellness Program, he helps firefighters maintain wellness through clinical evaluation, early detection and prevention education.
- > Julie Goldenson, a professor in our Psychology program, is a Clinical and Forensic Psychologist who brings her passion for research and applied practice together. She is the Co-Director of Research at the San Diego Family Justice Center and she is also involved in the assessment and treatment of diverse clientele in her Toronto practice.

International perspectives

Exchanges

If you participate in one of our international partnerships, you can spend a semester overseas at a foreign university such as East China Normal University, China; Hanze University of Applied Sciences, Netherlands; University of San Andrés, Argentina; and Ulster University, Northern Ireland. You get to travel and study abroad, but can do so while paying University of Guelph-Humber tuition fees (not international student rates).

International faculty will also be coming to you. We are pleased to welcome visiting professors who can share their academic expertise and culture with you.

Study abroad

You have the opportunity to learn and explore the world. In the International Field Study course, you are part of a small group on an educational adventure. Through professor-guided study tours, you experience concepts discussed in class, first-hand. And because all study abroad courses are partially subsidized by the University, the opportunities are within reach. You may also be eligible for additional travel grants: see page 35.

Past highlights include:

- > Visiting nature kindergarten and Farm Schools in Denmark.
- > Touring Kilmainham Gaol in Dublin, now a museum, to study the history of corrections.
- > Exploring the contributions of Greek and Roman civilizations by visiting the Acropolis, the Oracle at Delphi, and the Colosseum.

Study
Abroad
Locations
Visited



Undergraduate research

A research grant fund gives you the chance to work alongside faculty as a paid research assistant—a rare undergraduate achievement. Through these assistantships, you are able to apply classroom knowledge, while also developing skills in conducting experiments, research and data collection. You may also have the opportunity to contribute to research publications.

Research projects students have worked on include:

- › An innovative housing model providing integrated support services to adults with special needs supervised by Brenda Elias, Family and Community Social Services.
- › A study of the ways in which folk narrative and ghost tourism create “mediated” history and define national identity, supervised by Greg Kelley, Media Studies.

Program-based societies

Societies are run by students for students and are linked to our academic programs. You can join a society to help plan social and educational events, while developing leadership skills, gaining professional experience and networking.

Intellectual growth

Be a part of The Agora Fellowship: a select group of students who discuss ideas and themes from renowned books in a regular forum led by Assistant Vice-Provost George Bragues. Build your extracurricular experience, embark on a (subsidized) field trip and receive a stipend as an Agora Fellow.

Direct path to Law School: City University London partnership

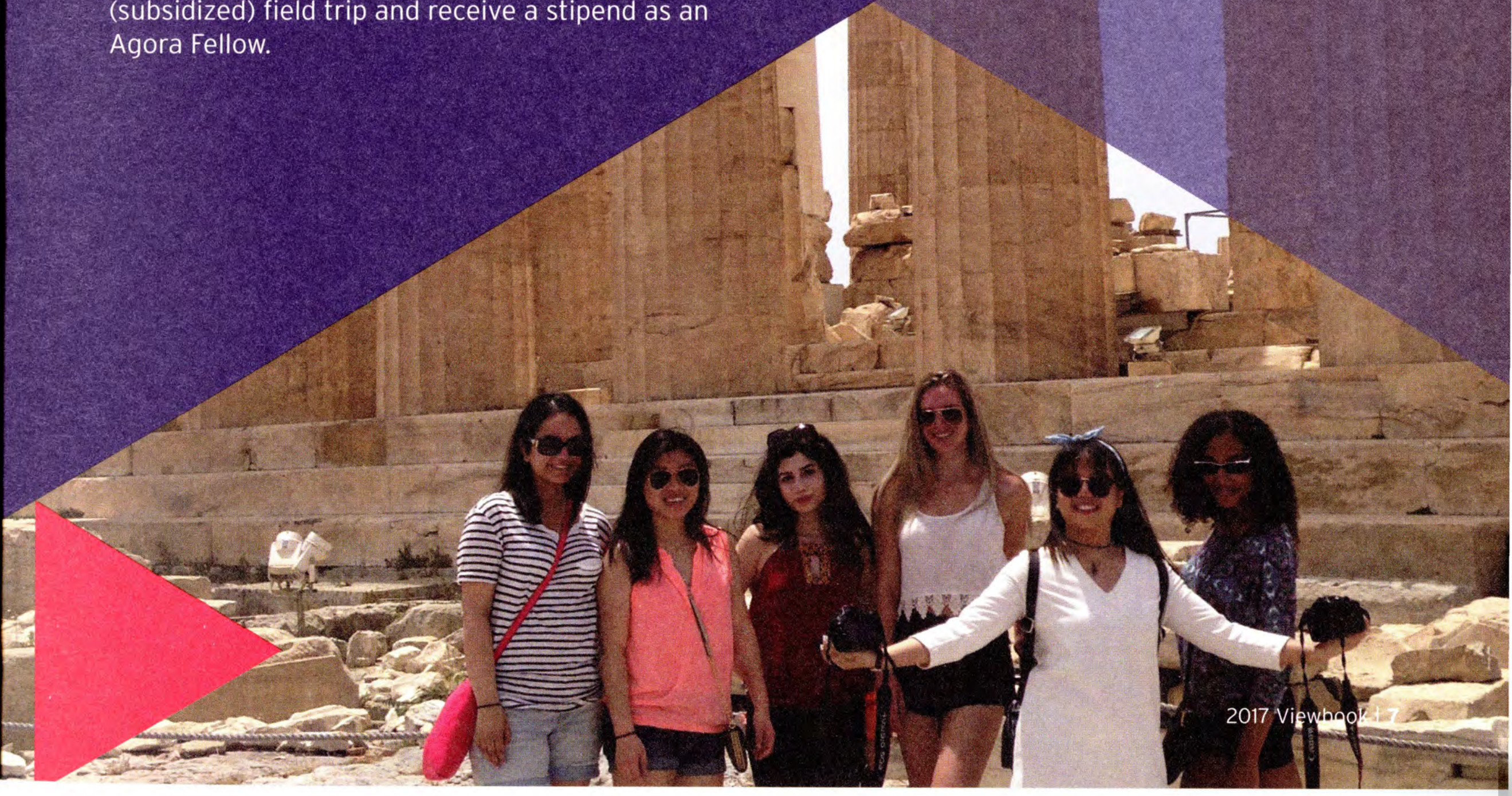
The University of Guelph-Humber and The City Law School, City University London have partnered to offer you a prime law school opportunity. As one of our graduates, you can earn a senior status law degree in two years: an advantage that puts you ahead. With a competitive average from our university, you are eligible for admission to the Graduate Entry LLB (Hons) at The City Law School in London, England, without an LSAT and you receive reduced tuition.

Study where the largest law firms in the world are located: London, England. The Graduate Entry LLB (Hons) attracts international students from all over the world—many from Canada. Follow in the footsteps of renowned alumni such as Mohandas Karamchand Gandhi, Margaret Thatcher and Tony Blair.

Take advantage of this partnership to earn an honours bachelor degree, a college diploma and an LLB in six years of full-time study.

“The study abroad trip to Athens and Rome sparked my love for mythology and history in a way a textbook never could. The experiences were valuable and unforgettable—a great way to end my four years at Guelph-Humber.”

› Mikayla Castello, Psychology graduate



Business

Do you want a successful career in business? Interested in understanding how markets work and the different ways goods are bought and sold? Do you have a passion for leadership?

Take charge. Learn how to market goods, fund a business, lead others, work ethically, think big and work within a team, but above all focus on your career objectives. Get introduced to a range of different business areas and discover where your interests lie. Our program combines an in-depth knowledge of the business world with the hands-on skills necessary to lead and succeed.

Focused academic program

Start with a foundation in the key areas of business. Courses in your first two years explore marketing, logistics, communications, ethics, organizational behaviour, economics and accounting. In years three and four, you will build a more personalized curriculum.

Choose to focus your studies in one of six areas of emphasis or select a variety of courses reflecting a range of interests.

Areas of emphasis

Accounting: Complete the courses you need to pursue your CPA when you graduate.

Finance: Learn about banking, insurance, capital projects, investing and portfolio management.

International Business: Explore global currencies, trade and industry practices of Asia Pacific, Europe and Latin America.

Management: Learn the challenges of running various types of enterprises including for-profit, not-for-profit, small and large businesses.

Marketing: Explore how product, price and promotion meet consumer needs and achieve company objectives.

Small Business Management and Entrepreneurship: Study key strategies for starting and maintaining a successful new venture.

You also have the opportunity to study abroad: see page 6 for details.

Industry connections

You will take part in up to **300 hours** (minimum 100 hours) of workplace experience tailored to your goals. Placements have included BMO Financial Group, Maple Leaf Sports & Entertainment, Sun Life Financial, Rogers Communications, Free the Children, Ontario Lottery and Gaming Corporation, and Investors Group.

Opportunities

Make it real

In our Business Management Simulation course, you will run a virtual business over one semester—making business decisions and managing the results. In the Planning a Small Business course, you will prepare a business plan for a small business to gain a practical understanding of the process for start-ups. You will work in a team in the Event Management courses to develop, implement and manage a special event in our Art Gallery.

Compete and network

Put your skills to the test and solve complex problems, earn valuable experience and network with top national and international companies. You can represent the University at business conferences and competitions against other postsecondary institutions, such as the Harvard International Consulting Competition, Royal Roads University International Undergraduate Case Competition and the Wharton Undergraduate Consulting Conference & Case Competition.





Parisa Khazra

Business, 4th year

"I have the opportunity here to build strong relationships with my professors. My profs have become my mentors and advisors."



Turner Fenton Secondary School, Brampton, ON



DECA, President
GH Business Council member
Student Leadership Scholarship recipient



Plans to pursue a law degree

EARN 2 CREDENTIALS

- > **HONOURS BACHELOR OF BUSINESS ADMINISTRATION**
- > **DIPLOMA IN BUSINESS ADMINISTRATION**

Admission subject requirements

- > ENG4U, any 4U math and 4 additional 4U/M courses
- > Estimated minimum range for admission: 75%-80%

Consider your future: careers and further education

Accountant	Marketing Manager	Master of Science in Management
Brand Manager	Consultant	Master of Science in Marketing
Claims Adjuster	Master of Business Administration	Master of Finance
Entrepreneur	Law School	Chartered Professional Accountant (CPA)
Event Manager	Master of Accountancy	
Financial Advisor		
International Accounts Manager		

Note: Some careers and entry into postgraduate education may require additional study.

Early Childhood Studies

Do you want to help children and make a difference in their lives? Are you passionate and caring? Are you enthusiastic, creative and fun? Do you want to learn more about why and how children do what they do?

Our program focuses on the physical, social, emotional and cognitive development of young children from birth to eight years and their interaction with the world around them. You will learn how to engage children, understand parent-child relations and assess a child's development. You get the know-how to support children individually, as well as work with their families, schools and the community.

Focused academic program

Our program focuses on children and their families in the context of the community so you gain an understanding of the child as a whole. Your first year immerses you immediately in early childhood studies. You are introduced to the domains of childhood development and theories and foundations of early childhood. In your second year, you learn the basics of human anatomy and physiology; how to create curriculum; observation and research skills; and dynamics of relationships.

In your third and fourth years, you learn how to work educationally and therapeutically with children and families. Curriculum includes children with special needs, program administration and leadership. You will develop a comprehensive set of abilities to assess children's development; support and educate children in a meaningful way; understand how to create interventions; and know how to work with children in a variety of settings.

You also have the opportunity to study abroad: see page 6 for the exciting details.

Industry connections

You will complete more than **700 hours** of workplace experience. Past placements include classrooms, hospital child life units, children's mental health centres, inclusive learning and therapeutic environments, early learning centres and community-based/advocacy organizations.

Placement 1: Job shadowing will help introduce you to the range of job opportunities available.

Placement 2: Experience an early learning and child care setting.

Placement 3: Participate in a placement related to inclusion and special needs.

Placement 4: Gain knowledge in community-based organizations.

Placements 5 & 6: Building on your previous experience, you will select a year-long setting tailored to your career aspirations and knowledge base.

Note: You will be required to complete a Vulnerable Sector Screening, documentation of immunization and a First Aid/CPR certificate prior to placement.

Opportunities

Learn through play

Borrow from our extensive collection of educational and therapeutic materials and toys in the Early Childhood Studies Resource Room to enhance your placements.

Be work-ready

Upon graduation you can become a Registered Early Childhood Educator.

Engage in your learning environment

Enjoy an interactive classroom that facilitates and enriches your learning with Smart Boards, whiteboard walls, specialized seating (pods) and desks, wiggle seats and integrated technology. You will see first-hand how learning environments can support diversity and inclusion for children with a range of abilities.

Community outreach and leadership

Take the opportunity to volunteer for community projects with your peers. Students have served meals at Ronald McDonald House and appeared on a TV show called "Towards Social Justice" for which they developed and demonstrated therapeutic play.





Lyssa Keil
Early Childhood
Studies graduate,
2015

"My placement expanded my opportunities to work with children and exposed me to a great career I had never considered—occupational therapy!"



Cobourg District
Collegiate Institute
East, Cobourg, ON



Campus Walk,
Volunteer
FYE Leader
Research Assistant
START Leader



Pursuing a Master
of Science in
Occupational Therapy

EARN 2 CREDENTIALS

- > **HONOURS
BACHELOR OF
APPLIED SCIENCE IN
EARLY CHILDHOOD
STUDIES**
- > **DIPLOMA IN
EARLY CHILDHOOD
EDUCATION**

Admission subject requirements

- > ENG4U and 5 additional 4U/M courses
- > Estimated minimum range for admission: 75%-80%

Consider your future: careers and further education

Registered Early Childhood Educator	Children's Rights Advocate	Master of Arts in Child Study & Education
Special Needs Resource Consultant	Research & Policy Analyst	Master of Science in Speech-Language Pathology
Childcare Supervisor/ Director/Owner	Bachelor of Education (Teachers College)	Master of Science in Child Life & Pediatric Psychosocial Care
Intensive Behaviour Therapist	Master of Education	Masters programs in Disability Studies
Play Therapist	Master of Science in Occupational Therapy	

Note: Some careers and entry into postgraduate education may require additional study.

Family and Community Social Services

Do you want to help others? Do you want to effect change? Are you interested in getting involved with a social issue you are passionate about?

Make a difference in society in a very meaningful way. Our program explores current social issues, and the development and delivery of programs designed to assist individuals, families and communities. You will be exposed to different areas of social service work and learn how to understand the challenges faced by vulnerable populations so you can learn how to deliver impactful services, including counselling, mediation and crisis intervention.

Focused academic program

Courses in your first year focus on understanding human behaviour and issues related to individuals, families and groups in the field of social work. Courses include Social Work in Canada, Couple and Family Dynamics, and Interpersonal Communication Skills.

In your second year, you will engage in theoretical and practical studies in counselling, ethical and professional issues, and working with various vulnerable populations.

In your upper years, you will work with diverse groups and learn theory and techniques in family therapy, case management and social work practice.

You will graduate with important skills and approaches you need for the workplace or further studies in social work—how to listen, how to support someone, understanding boundaries, professionalism, cultural awareness, compassion and self-care.

You also have the opportunity to study abroad: see page 6 for more details.

Industry connections

Starting in your second year, you will earn more than **850 hours** of supervised workplace experience at three different placements. Past placements include children's mental health centres, hospitals, seniors' residences, addiction centres, research clinics, detention centres and correctional institutions.

Placement 1: Initial exposure to a variety of social issues and the day-to-day operations within a community organization.

Placement 2: Continue to learn about agency functions and begin to interact with agency staff, volunteers, clients and the community for one academic year.

Placement 3: Provide direct client services through individual, family, group and/or community interventions in a year-long placement.

Note: You will be required to complete a Vulnerable Sector Screening prior to each placement.

Opportunities

Develop clinical skills

Build strong clinical skills that exceed the industry standard for undergraduate education. Our program boasts many clinical courses that teach basic communication competencies to more in-depth therapeutic interventions for individual, group and family counselling.

Participate in professional development

The Social Services Symposium is an annual themed event that gives you the opportunity to present research and learn from various practitioners and researchers in your field.

Communicate

Courses offer you the opportunity to practise interviewing, counselling, crisis intervention, mediation and conflict resolution. By videotaping the sessions and receiving feedback you can analyze your techniques to help you learn to communicate and support people more effectively.





Stefania Baccarella

Family and Community Social Services graduate, 2016

"In placements, I worked with a variety of populations, from youth-at-risk to older adults, which helped me explore different aspects of social services."



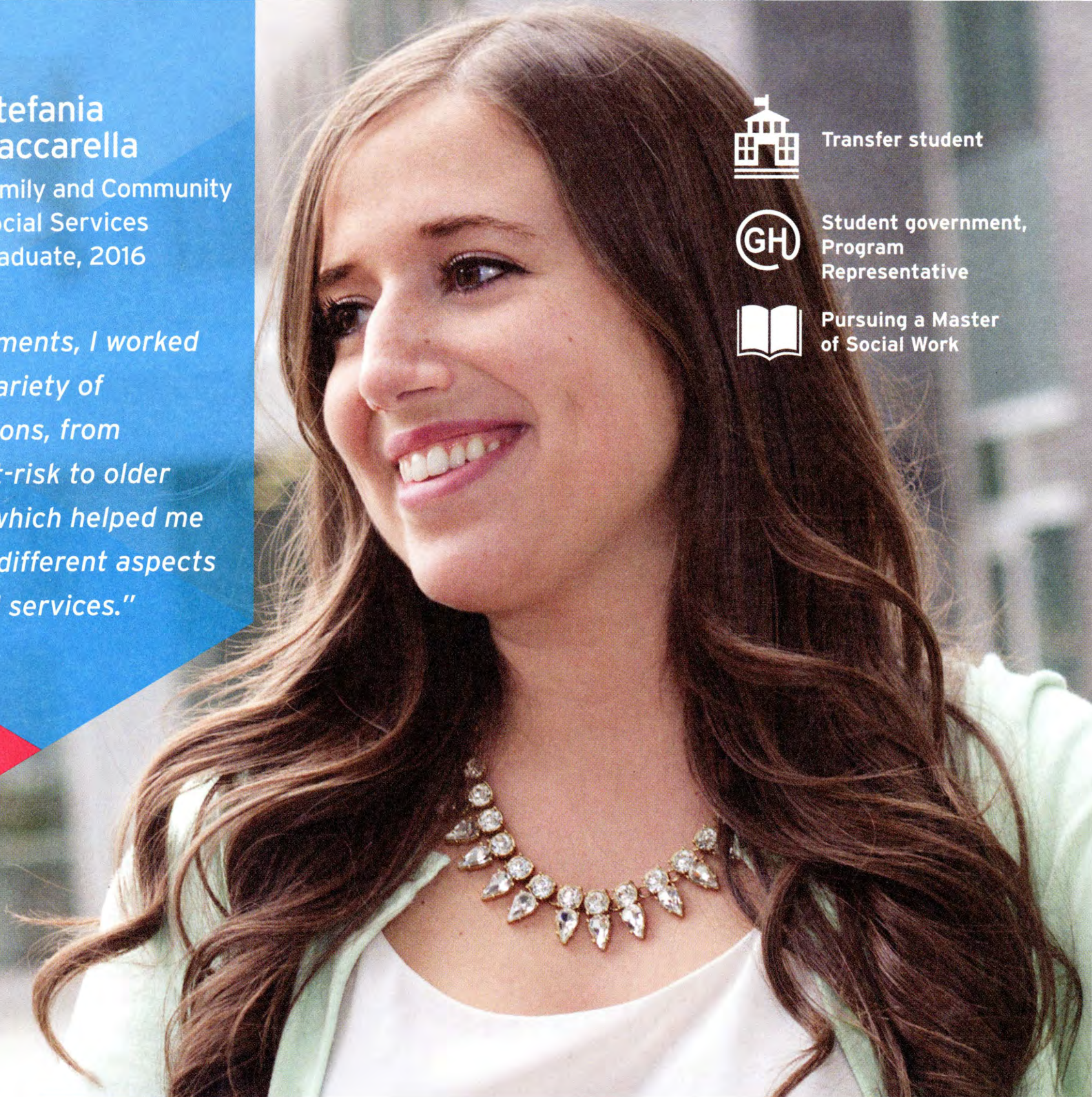
Transfer student



Student government, Program Representative



Pursuing a Master of Social Work



EARN 2 CREDENTIALS

- > **HONOURS BACHELOR OF APPLIED SCIENCE IN FAMILY AND COMMUNITY SOCIAL SERVICES**
- > **SOCIAL SERVICE WORKER DIPLOMA**

Admission subject requirements

- > ENG4U and 5 additional 4U/M courses
- > Estimated minimum range for admission: 75%-80%

Consider your future: careers and further education

Case Manager	Volunteer Coordinator	Master of Public Policy
Community Youth Worker	Social Worker	Masters programs in Disability Studies
Hospice Support Worker	Mental Health Worker	Law School
Family Support Coordinator	Master of Social Work	Postgraduate certificate in ABA/IBI
Crisis Counsellor	Bachelor of Education (Teachers College)	Bachelor of Social Work
Social Service Coordinator		

Note: Some careers and entry into postgraduate education may require additional study.

Justice Studies

Are you interested in work related to our legal system: immigration, social justice, policing, security, parole or probation? Do you want to help people? Is law school in your future?

Accept the challenge and responsibility a career in justice studies holds. Our program gives you the opportunity to gain academic and practical experience in justice issues. Develop strategies for working in a public service role with high-risk individuals in public, private, community and institutional settings, or moving ahead with further educational opportunities.

Focused academic program

In your first year, you will build a foundation in justice and related fields through courses such as Crime and Criminal Justice, Introduction to Law, and Principles of Sociology. In year two, you begin to take courses that touch on various services and how they are delivered, such as counselling, conflict resolution, forensics and policing.

After four years of full-time study, you will earn an **Honours Bachelor of Applied Science in Justice Studies** as well as a college diploma. You will choose which diploma to pursue in your second year:

Community and Justice Services

Focuses on social issues and explores the development of community programs, ways to work with both victims and offenders, and methods of crime prevention.

Or

Police Foundations

Prepares you for a career in the various levels of law enforcement in the Canadian justice system.

Years three and four move on to advanced courses that immerse you in issues such as ethics; equality; rights and freedoms; youth and the law; and criminology.

Throughout your four years, you will be exposed to the justice system: from the rules we follow, to dealing with people and communities, to the hands-on processing of crime scenes and making arrests. Build key skills required in any area of justice such as critical thinking, research methods and how to write effectively. You also have the opportunity to study abroad: for more information see page 6.

Industry connections

Unique to our justice program, you will take part in at least **200 hours** of community service placements in two justice agencies/organizations.

Past placements include Peel Regional Police, Ontario Justice Education Network, Alcohol and Gaming Commission of Ontario, Yonge Street Mission, The Salvation Army and Ministry of the Attorney General.

Note: You may be required to complete a Vulnerable Sector Screening and/or Criminal Reference Check prior to placement.

Opportunities

Investigate crime scenes

Evaluate staged crime scenes in our very own crime scene investigation (CSI) room. You can use mock court to role-play a case. Learn investigative techniques and how to handle evidence.

Observe social issues

In the Canadian Social Problems course, take part in a street walk with classmates and faculty in downtown Toronto to observe and discuss social issues, such as poverty and homelessness.

Meet people in the field

Take specialized field trips to places such as the Ontario Police College, correctional facilities and local courthouses. Guest speakers and visiting professors lend their expertise to your education.

Join the society

Join the Criminal Justice Honour Society, Alpha Phi Sigma. The society promotes academic excellence, community service, educational leadership and unity.





Ovais Ahmad

Justice Studies,
4th year

"Small classes are enriching. I engage with professors during and after class. This individualized attention has raised my learning to a higher level."



Weston Collegiate
Institute, Toronto, ON



Alpha Phi Sigma,
Vice-President of
Communications

CSI Forensic Assistant

Founders' Academic
Merit Scholarship
recipient

Peer Tutor

University of Guelph
Senate member



Plans to pursue
a law degree

EARN 2 CREDENTIALS

- > **HONOURS BACHELOR OF APPLIED SCIENCE IN JUSTICE STUDIES**
- > **DIPLOMA IN COMMUNITY AND JUSTICE SERVICES OR POLICE FOUNDATIONS**

Admission subject requirements

- > ENG4U and 5 additional 4U/M courses
- > Estimated minimum range for admission: 75%-80%

Consider your future: careers and further education

- | | | |
|------------------------|--|--|
| Victim Services Worker | Border Services Officer | Master of Social Work |
| Crime Analyst | Court Worker | Master of Political Science: International Relations |
| Corporate Investigator | Law School | Master of Arts/ Science in Forensic Psychology |
| Police Officer | Master of Arts in Criminology | |
| Probation Officer | Bachelor of Education (Teachers College) | |
| Lawyer | Master of Public Administration | |
| University Professor | | |

Note: Some careers and entry into postgraduate education may require additional study.

Kinesiology

Do you want to teach people how to adopt healthier lifestyles? Are athletics and physical fitness important to you? Would you like to be a part of new performance and health research?

Turn your passion for health and fitness into a future in kinesiology and help address today's health concerns. Our program focuses on the science of the body and human movement. You will learn how the body works, how to make it work better, what causes health issues and how to prevent illness. You will develop a strong scientific background and practical skills that will enable you to apply your knowledge to essential roles in health promotion, fitness rehabilitation, coaching and research.

Focused academic program

In the first two years of the program, you will learn the fundamentals of the human body through courses such as Human Anatomy; Cell Biology; and Biochemistry and Metabolism, while developing applied skills in courses such as Health Counselling and Behaviour Change; Exercise Prescription; and Fundamentals of Fitness Testing. In the third and fourth years, your courses will focus on performance and clinical applications of exercise and nutrition theory.

Embedded in our program is hands-on experience through practicum courses, labs and placements. You also have the opportunity to study abroad: for more information see page 6.

Industry connections

You will complete more than **240 placement hours** during your final two years. On campus, you will work one-on-one with a client to help reach their fitness goals through a personal training placement. Off campus, you will have two placements with organizations offering applied experience or research.

Placements have included Princess Margaret Cancer Centre, Ontario Lung Association, Aim2Walk Neurological Rehabilitation Centre, Toronto and Peel District school boards, YMCA, cardiac rehabilitation facilities, and several university athletic and varsity departments.

Opportunities

Learn through labs

Labs extend your classroom content through applied techniques and hands-on lessons. They are integrated into every year of study and enhance your learning experience of anatomy, exercise prescription, biomechanics, fitness assessment and more.

Choose career-relevant practicums

You will take at least four practicum courses, focusing on complementary and advanced exercise training and testing, to gain hands-on experience in an area of interest. Courses include Functional Ability Evaluation; Athletic Bandaging and Taping Techniques; Martial Arts and Kickboxing; and Forensic Kinesiology.

Complete research

Our program offers unique, valuable research experience through placement hours for research-based work, literature review or thesis courses, and research assistant positions with University faculty.

Get certified

With your degree, you will be eligible to pursue the following designations with several professional organizations: Registered Kinesiologist; Certified Personal Trainer; Certified Exercise Physiologist; Certified Strength and Conditioning Specialist; and Fitness Instructor Specialist.





Jordan Lee

Kinesiology
graduate, 2016

"A wide variety of opportunities helped me discover my career path: in-class theory, practical experience with assessment labs and working as an intern in a chiropractic clinic to biomechanics research in my fourth year."



Mississauga Secondary School, Mississauga, ON



Canadian Obesity Network, GH Chapter Activities Coordinator

Laboratory Research Assistant

Peer Tutor



Pursuing a Master of Science in Human Health and Nutritional Sciences

Ontario Graduate Scholarship recipient

EARN 2 CREDENTIALS

- > **HONOURS BACHELOR OF APPLIED SCIENCE IN KINESIOLOGY**
- > **DIPLOMA IN FITNESS AND HEALTH PROMOTION**

Admission subject requirements

- > ENG4U, any 4U math, any 2 courses from SBI4U, SCH4U, SPH4U or PSE4U/PSK4U and 2 additional 4U/M courses
- > Estimated minimum range for admission: 75%-80%

Consider your future: careers and further education

Registered Kinesiologist	Occupational Health and Safety Specialist	Master of Science
Exercise Physiologist	Master of Physiotherapy	Master of Public Health
Wellness Coordinator	Master of Occupational Therapy	Master of Arts in Health Promotion
Research Assistant	Bachelor of Education (Teachers College)	Chiropractic College
Certified Strength and Conditioning Specialist		Naturopathic College
		Medical School

Note: Some careers and entry into postgraduate education may require additional study.

Media Studies

Interested in storytelling? Do you have an appetite for information? Does your creativity know no bounds? Do you have a flair for technology?

Explore journalism (telling stories), digital communications (telling stories digitally), public relations (telling stories on behalf of others), image arts (telling stories visually) and media business (managing the business of storytelling). Our award-winning students learn how to communicate and develop the skills to use different media platforms to meet tomorrow's needs. We keep pace with an industry that sees our graduates as media professionals with the versatility to work in diverse and changing environments.

Focused academic program

During your first two years, you will be introduced to various media and study the historical, social, cultural and ethical aspects of the industry through courses that challenge you to think, read and write critically. Learn how media has developed then look ahead to emerging trends. Following your second year, you will choose one of five specializations.

Specializations

Digital Communications: Create multi-platform content; work with web design, audio and videography.

Image Arts: Learn photographic techniques, video and photo editing and manipulation, and study commercial and art photography.

Journalism: Explore print, broadcast and online journalism with a strong focus on writing, editing and pitching stories.

Media Business: Learn the business of managing media sales, marketing and advertising.

Public Relations: Learn corporate communications, media relations and event management using various tools, including traditional and social media.

You are not limited by your specialization. You can take courses from other areas as well. Third- and fourth-year courses teach you about governance and policy and how to work in a team environment, such as producing a newspaper or television broadcast or promoting and managing a large event.

As part of the Applied Research Project course, you will explore, in depth, a subject of your choice.

Past student projects have included "Corporate Greenwashing" and "The Dark Web: The Underworld of the Internet". You also have the opportunity to study overseas: see page 6 for the exciting details.

Industry connections

After third year, you will complete an internship of more than **200 hours**. Internships have included Walt Disney Studios Canada, Discovery Channel, *Chatelaine*, Maple Leaf Sports & Entertainment, Thomson Reuters, The Brand Factory and 680News. An international internship in Bremen, Germany, is also an exciting course option.

Opportunities

Access technology

You have exclusive access to a variety of the latest industry tools, technology and resources. Our multimedia production facility has high-definition video; a green screen; edit suites; facilities for photography, videography, streaming broadcasts; and mobile technology.

Make an impression

Use our print room with its large-format printer to output your masterful images and designs.

Work as a team

In your fourth year, organize EMERGE, a groundbreaking media project that brings together all five specializations. Plan, collaborate and produce multiple projects simultaneously. It's a print and online magazine, a one-day conference, three websites, a photography exhibition, a media strategy and a national awards program for Canadian media students.





Aaron Rabinovits
Media Studies
graduate, 2015

"Guelph-Humber truly taught me what was necessary to be a leader in the workplace, communicate with co-workers, grow my network and how to continually develop my career."



Bayview Secondary School, Richmond Hill, ON



Residence Council, President

GuHu member

Humber Students' Federation, Communications Writer



Digital Account Strategist, The Brand Factory

EARN 2 CREDENTIALS

- > **HONOURS BACHELOR OF APPLIED ARTS IN MEDIA STUDIES**
- > **DIPLOMA IN MEDIA COMMUNICATIONS**

Admission subject requirements

- > ENG4U and 5 additional 4U/M courses
- > Estimated minimum range for admission: 75%-80%

Consider your future: careers and further education

Digital Content Producer
Social Media Specialist
Publicist
Videographer
Media Buyer
Event Coordinator

Journalist (print, radio, TV, online)
Photographer
Art Director
Advertising Specialist
Master of Arts in Communications
Law School

Master of Journalism/ Professional Communication
Bachelor of Education (Teachers College)
Graduate program in Communication and Culture

Note: Some careers and entry into postgraduate education may require additional study.

Psychology

Interested in learning how people think? Want to understand human emotion and why people behave the way they do? Are you curious about the human brain?

Find your niche. Through our program you will examine theories and research exploring human thought, feeling and behaviour. Study the brain. Learn research skills. Discover how psychology plays a role in every area of society—business, health, sports, entertainment, law, communication and more. Get the mix of theoretical knowledge and experience that will prepare you for continued study or to be competitive in the workplace immediately following graduation.

Focused academic program

A solid foundation in psychology will drive your success. Your first two years introduce you to key concepts and provide foundational courses, including Developmental Psychology; Social Psychology; Research Methods; and Personality. You will also build your skills in critical thinking and effective writing.

In addition to your honours degree and diploma, you have the option to pursue **one of three certificates** in years three and four:

Intercultural Relations

Increase your cultural literacy and enrich your understanding of diversity in Canada.

Organizational Behaviour

Develop a greater understanding of leadership, groups and behaviour in organizations.

Research Skills and Analysis

Expand your knowledge of research methods in psychology and refine your investigative and analytical abilities.

In years three and four, your courses will become more focused and offer more applied study. You will apply learned concepts through courses such as Learning Difficulties and Disabilities; Drugs and Behaviour; and Theories of Psychotherapy. In your final year, you will choose between an honours seminar and thesis.

You also have the opportunity to study abroad: see page 6 for details.

Industry connections

In the third-year course Applied Study in Psychology, you will integrate psychological theory and research with at least **100 hours** of workplace experience. Placements have included Peel Halton Dufferin Acquired Brain Injury Services, Aphasia Institute, Credit Valley Hospital, The Etobicoke Children's Centre, Ontario Correctional Institute and Community Living Mississauga.

Note: You may be required to complete a Vulnerable Sector Screening prior to placement.

Opportunities

Learn outside the classroom

As part of the optional field course, learn from Elders, community members and local mental health care service providers working among Indigenous communities in northern Ontario. Examine challenges and treatments, and explore the future of mental health in these communities and across Canada.

Combine education and social events

Take part in Common Time: weekly workshops, notable guest lecturers and special events that bring together fellow classmates and faculty in an academic and social atmosphere. Many activities are run by our Psych Society.

Gain research experience

Consider applying for a paid research assistant position for additional hands-on experience. Students have assisted our faculty in studies such as examining coping strategies in marathon runners, exploring new treatment approaches that address anxiety in children, and cross-cultural psychology research.





Holly Boyne

Psychology, 4th year

"I get the theoretical background in addition to practical experience in community mental health. Through class work, placement and student life, I am connected to a community that is dedicated to developing exceptional individuals."



Elmira District Secondary School, Elmira, ON



Canadian Psychological Association, Campus Representative and Student Affiliate

Founders' Academic Merit Scholarship recipient

Psych Society, President
Research Assistant



Plans to pursue further studies to become a clinical child and school psychologist

EARN UP TO 3 CREDENTIALS

- > HONOURS BACHELOR OF APPLIED SCIENCE IN PSYCHOLOGY
- > DIPLOMA IN GENERAL ARTS AND SCIENCE
- > OPTIONAL CERTIFICATE IN: INTERCULTURAL RELATIONS, ORGANIZATIONAL BEHAVIOUR OR RESEARCH SKILLS AND ANALYSIS

Admission subject requirements

- > ENG4U and 5 additional 4U/M courses
- > Estimated minimum range for admission: 75%-80%

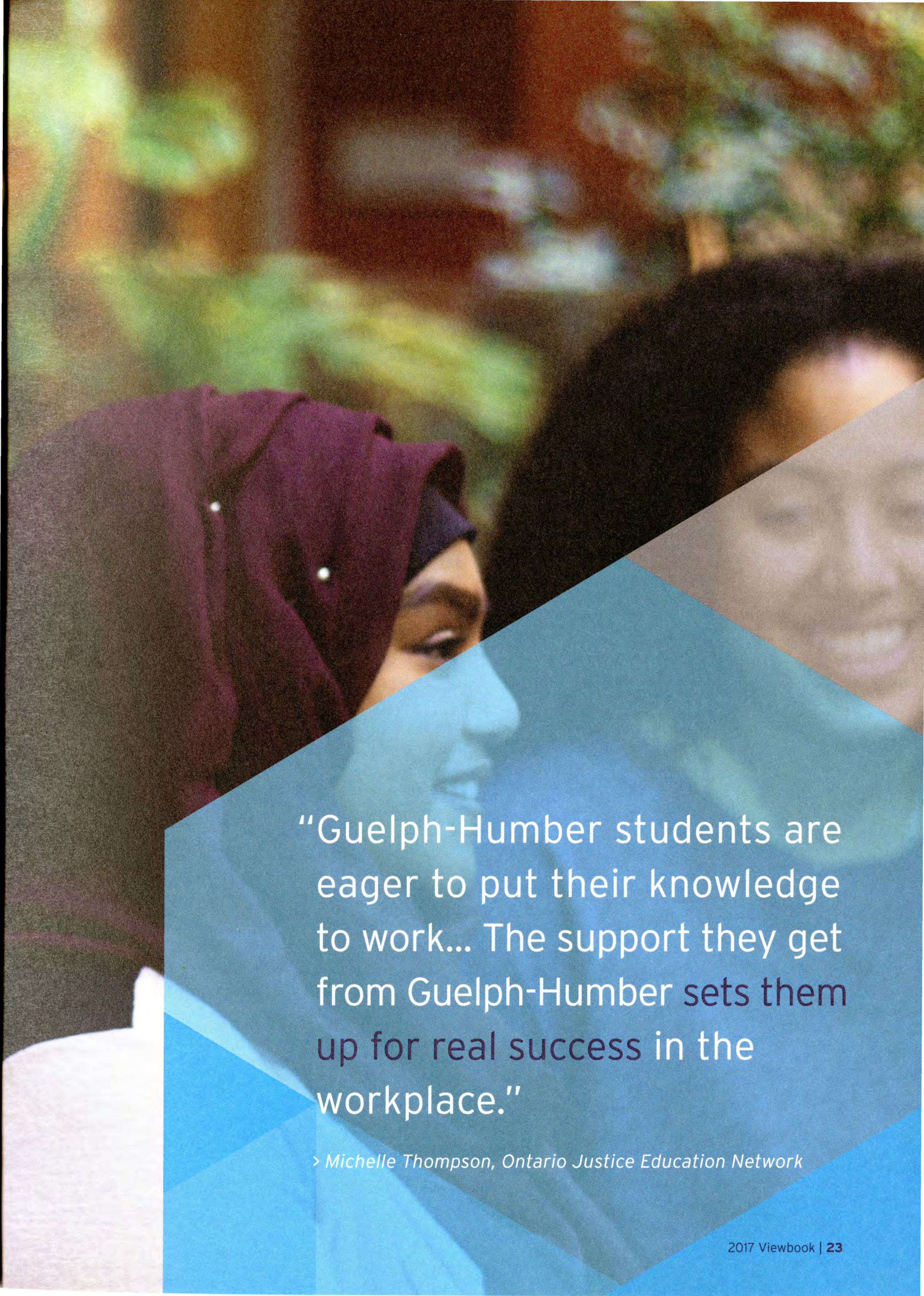
Consider your future: careers and further education

Psychologist	Group Facilitator	Bachelor of Education (Teachers College)
Counsellor	Human Resources Specialist	Law School
Psychotherapist	Masters/PhD in Psychology	Master of Counselling Psychology
Researcher	Medical School	Master of Arts in Clinical Psychology
Neuroscientist	Master of Social Work	
Mental Health Worker	Master of Education	
Case Manager		

Note: Some careers and entry into postgraduate education may require additional study.

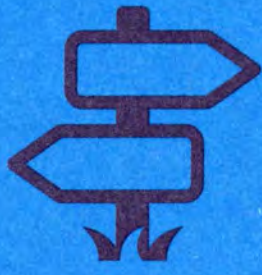
Student Services





“Guelph-Humber students are eager to put their knowledge to work... The support they get from Guelph-Humber sets them up for real success in the workplace.”

> *Michelle Thompson, Ontario Justice Education Network*



EXPERIENCE SUPPORT

Life as a University of Guelph-Humber student means being involved and part of a close-knit community.

Hello. My name is...

We'll know you in the Student Services office. We pride ourselves on a high level of student support. We are here for your success!

Our small student population means you have easy access to assistance for all your first-year needs:

- > transitioning to university life
- > meeting other students
- > financial advice
- > course selection
- > placement services
- > career planning
- > student employment

Here, it's about people

Every program has a dedicated Academic Advisor, Career Services Coordinator, Placement

Coordinator and Academic Liaison Librarian in place to support all your program-specific needs. You can also rely on Support Peers: current students who work alongside staff, trained to help you with "how to" questions, academics and campus life.

"At Guelph-Humber, I had an amazing experience. The staff were personable and easy to talk to about any issues. They also care about the students and want to help you succeed."

> *Allyson Schroeter, Early Childhood graduate*

Every new student can rely on support from the Student Transition and Resource Team (START) Leaders: senior students who are knowledgeable about the resources available to you. They offer you a student perspective on what campus life is really like, because they've been in your shoes!



Careers start here

You can launch your career starting in year one with career staff to guide you and provide one-on-one assistance. We are here to help you network, support you with your placement, develop your professional skills and build confidence as you begin your job search—whether it is for part-time work as a student or your future career.

Work on campus

Working on campus is not only convenient, it's also a great way to meet people, gain professional experience and contribute to the future of the University. There are many jobs on campus that we can help you find. Ask about student jobs on campus such as Social Media Assistant, Student Photographer, Tour Guide or roles in departmental offices.

Support for all

Aboriginal Resource Centre

The Centre is open to everyone interested in learning about First Nations people. If you are an Indigenous person, the Centre can offer you support as you transition to university life.

International Centre

As an international student, you can meet with a Student Advisor who can help you get involved in organized events and learn more about the on- and off-campus community.

LGBTQ+ Resource Centre

Connect with other LGBTQ+ students. The Centre offers drop-in programming, organizes events, and offers support and resources. We celebrate diversity and welcome everyone interested in learning more about LGBTQ+ issues.

Multi-Faith Centre

The Centre is available for quiet prayer and reflection, and small gatherings where faith and interfaith dialogue is encouraged. Student groups are encouraged to use the space.

Public Safety

Your safety is paramount. Campus Security patrols the campus 24 hours a day, 7 days a week. The Campus Walk Program provides a walking partner for anyone who wishes to be accompanied to their vehicle, residence or elsewhere on campus.

Student Wellness and Accessibility Centre

You can find the Health Centre, Accessible Learning Services—providing services for persons with disabilities—and Counselling Services in one location for seamless, holistic support.

Other support services and facilities include:

- > Accounting Centre
- > Bookstore
- > Child Care
- > Learning Commons (individual and group study areas)
- > Library
- > Math Centre
- > Media Equipment Centre
- > Peer Tutoring
- > Practice Presentation Rooms
- > Student Financial Services
- > Writing Centre

Services are provided by the University of Guelph-Humber or Humber. More information about services can be found at guelphhumber.ca/futurestudents.

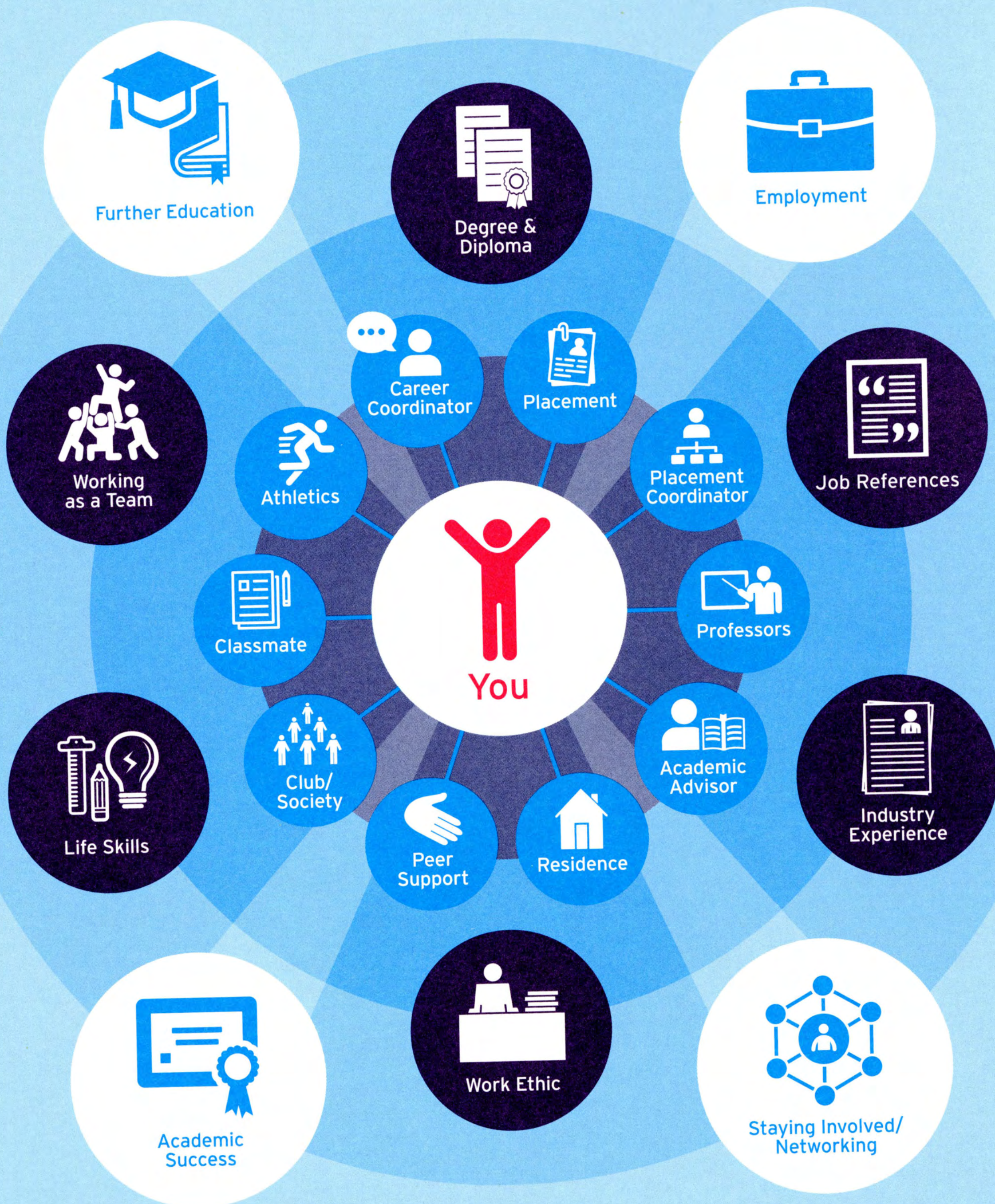




THINK CONNECTED EXPERIENCE SUCCESS

Your network at the University of Guelph-Humber.

All of the people at the University form a unique network around you. When people connect, a web forms that supports your academic and personal growth during university and after graduation.





“Interning in Public Relations at the Chelsea Hotel gave me the hands-on experience needed to fully understand what I had learned in class and explore my career goals. My experience built my organizational and interpersonal skills, and I am now more confident in my abilities.”

› *Kailey MacDougall, Media Studies graduate*



EXPERIENCE COMMUNITY

Build your skills and socialize by participating in activities on campus.

Events and programs

We want you to make the most of your university experience by participating in events designed for you as a first-year student to meet people and get acquainted with the University:

First Year Experience (FYE) Program -

Meet other first-year students in your program. Connect online throughout the summer and meet at Orientation for an exclusive First Year Experience event. Mentoring and support from your FYE leader will continue through your first year.

Kick Start - Use this summer event to help prepare yourself and your family for your transition from high school to university life.

Orientation - Connect with other incoming students at this fun, students-only, official welcome to life at the University. We'll get you set for classes and show you how to get involved.

"For me, the connections and everlasting friendships forged at the University are undeniably as valuable as the education itself."

> *Marco Febbraro, Justice Studies graduate*

Student government

Interested in the political life and advocating for your fellow students? Consider becoming active in student government.

► *Build your co-curricular record by participating in clubs, societies, student government and other activities outside of class.*

Clubs and societies

Explore your interests, make friends, network and have fun with a club or society.

Like the City of Toronto, our student body is a cultural community; many of our clubs reflect this. Clubs target the things you like to do for fun. If you can't find what you're looking for you can start your own! Societies are related to our seven academic programs and offer a new realm of activities outside of class with a focus on your field of interest. There are more than 50 clubs and societies to get involved with!

► *Justice Studies students aimed for fun at an archery tag competition and Psych Society students enjoyed a social trip to the Aquarium, below. What will you do?*





THINK ACTIVE

Balance your academic life with a healthy and active lifestyle. Whether you prefer individual workouts, recreational play, competitive sports or watching from the sidelines, there's something for everyone's definition of active.

Athletic Centre

As a University of Guelph-Humber student, you have access to the Athletic Centre on campus, including gymnasiums, weight room, cardio centre, aerobic studios and multi-purpose sports fields.

Just for fun

You can take a break from class with a range of recreational sports on campus, including intramural or extramural leagues. Check out what the Fitness Centre has to offer, such as bootcamp, yoga or Zumba. And for those thinking outside of the norm, the Athletics department organizes off-campus activities that have included treetop trekking and indoor rock climbing.

Varsity athletics

Compete against other universities and colleges in the province and throughout the country. You can try out for either the University of Guelph Gryphons or Humber Hawks. For more information, visit University of Guelph Athletics at gryphons.ca or Humber Athletics at athletics.humber.ca.

Guelph Gryphons

- M Baseball
- M W Basketball
- M W Cross-Country
- W Field Hockey
- W Figure Skating
- M Football
- M W Golf
- M W Hockey
- M W Lacrosse
- M W Nordic Skiing
- M W Rowing
- M W Rugby
- M W Soccer
- M W Swimming
- M W Track & Field
- M W Volleyball
- M W Wrestling

Humber Hawks

- M W Badminton
- M Baseball
- M W Basketball
- M W Cross-Country
- M W Curling
- M W Golf
- W Rugby
- M W Soccer
- M W Soccer, Indoor
- W Softball
- M W Volleyball



"Athletics is a second family. It's very social and makes you part of something great. If you're not an athlete you can be a fan! I have met so many people watching games and cheering on the Humber Hawks."

> *Maria Christina De Rose, Kinesiology graduate*



EXPERIENCE HOME

Living away from home will build your independence and you'll meet many new people whether you live on or off campus.

Residence

Live and learn among students from both the University of Guelph-Humber and Humber. Residence facilities are located just a two-minute walk from the University. As a first-year resident your room will be single style. You can choose from themed floors, such as co-ed, health and wellness or quiet study—whichever is right for you!

Community kitchens that can be used for group cooking, an exercise room, recreational space, a dining hall and laundry facilities are all available to you. Dining plans are required if you live in residence and you can use your plan at food service outlets across campus. You will select from three dining plan sizes to accommodate your appetite.

You should account for approximately \$8,420 to \$11,024 per academic year for your dining plan and accommodations.

Applying to residence

Details about the online application will be included with an offer of admission. Residence operates on a first come, first served basis; therefore, you are encouraged to apply as soon as you receive an offer of admission.

Winter entry: For transfer students starting in January 2017, residence applications can be submitted online beginning October 3, 2016.

Summer entry: For transfer students starting in May 2017, residence applications can be submitted online beginning February 1, 2017.

Fall entry: For all students starting in September 2017, residence applications can be submitted online beginning February 1, 2017. The deadline for applications for September is June 1, 2017.

For more residence information, visit humber.ca/residence.

Off campus

Are you planning to live near campus? You can find resources through the Off-Campus Connection program to help you find off-campus living accommodations, community events and tips for living away from home for the first time. Visit humber.ca/offcampusconnection.

"Living in residence helped me meet people and there were a ton of opportunities to get involved in. It really did become my home away from home!"

> *Erin Cochrane,
Media Studies graduate*





THINK LOCAL(E)

Our campus location makes commuting a great option.

By public transit

Arrive metres from our front door via Brampton/Züm, Mississauga, Toronto or York Region/VIVA transit buses. Ten routes that cross the GTA stop in the newly built transit terminal on campus. For your return trip, digital signs indicate when your next bus will arrive on campus. Discounted TTC student passes can be purchased at the Humber Bookstore, too. We have included a few transit route examples for locations in the Greater Toronto Area.

Region	Transit system	From	How to get to campus
Toronto	TTC	Finch Station (Yonge-University subway line)	36A or 336 Finch West bus
Toronto	TTC	Kipling Station (Bloor-Danforth subway line)	191 Hwy 27 Express bus
Toronto	TTC	Wilson Station (Yonge-University subway line)	96A/B/D Wilson bus
Toronto	TTC	York Mills Station (Yonge-University subway line)	186 Wilson Express bus
Mississauga	MiWay	City Centre Bus Terminal/Square One	107 Express bus north (Sept to April)
Mississauga	MiWay	Clarkson GO Station	110 bus north to City Centre Bus Terminal, transfer to 107 Express bus north (Sept to April)
Mississauga	MiWay	Meadowvale Town Centre	42 bus east, transfer to 22 bus east
Brampton	Brampton Transit/Züm	Bramalea City Centre	501 bus east, transfer to 50 bus south
Brampton	Brampton Transit/Züm	Downtown Transit Terminal	501 bus east, transfer to 50 bus south
Brampton	Züm	Shoppers World	511/511A bus east
Vaughan	YRT/VIVA	Promenade Terminal	77 bus west, transfer to 7 bus south
Vaughan	YRT/VIVA	Vaughan Mills Mall	85 or 85C bus west, transfer to 7 bus south
Halton/Peel	GO	Milton (Milton line)	Runs from Milton Station to Union Station, Mon-Fri, and stops at Kipling Station with connections to TTC (above)
Waterloo/Wellington/Peel	GO	Etobicoke North GO Station (Kitchener line)	Walk south, catch 45 Kipling bus north, transfer to 96 Wilson west

Please note: Transit routes are subject to change and you are encouraged to independently research getting to the University of Guelph-Humber. Many routes have a variety of transit options. For more detailed information please contact the specific transit system.

For transit information visit:

Brampton: brampton.ca

GO Transit: gotransit.com

Mississauga: miway.ca

Toronto: ttc.ca

York Region: yrt.ca

By car

If you drive to campus, you can purchase a parking permit for the fall/winter (\$465-\$578*) or summer (\$293.25*) semesters.

Take Highway 427 to the Finch Avenue exit. Travel east on Finch Avenue West and turn right onto Humber College Blvd. Proceed to Entrance A.

*Estimates based on 2016-17 rates.

Location



Scholarships and Tuition





“Guelph-Humber interns demonstrate an astute desire to learn and grasp as many skills as possible while completing their assignments. Their reliability and drive to succeed are unparalleled.”

› *Said Mortaza Zeewari, Canadian Human Rights International Organization*



EXPERIENCE REWARD

Scholarships, bursaries and awards are a great way to support your educational expenses.

Renewable Entrance Scholarship

\$2,000-\$5,000

When you apply as a Canadian high school student you will automatically be considered for a Renewable Entrance Scholarship, based on your admission average.

Entrance (first year) award levels	
Scholarship	Final Admission Average
\$5,000	90% or above
\$4,000	85-89.9%
\$3,000	80-84.9%
\$2,000	75-79.9%

Renewal - We continue to reward your academic achievement!

Your scholarship is renewable for three years.

Scholarship Renewal Amount	Average
\$3,000	90% or above
\$2,000	85-89.9%
\$1,000	80-84.9%

If you are awarded a Renewable Entrance Scholarship, you will automatically be considered for each renewal year. To renew your scholarship, you must maintain a 100% course load in the fall and winter semesters. We will base your renewal amount on your cumulative average (minimum 80%) of the fall and winter semesters before the year of renewal.

► **You can be a recipient of both the Founders' Academic Merit Scholarship and the Renewable Entrance Scholarship, for a possible total of \$34,000 over four years of full-time study!**

Transfer Student Entrance Scholarship

\$2,000-\$5,000

When you apply as a transfer applicant from college or university, you will automatically be considered for the Transfer Student Entrance Scholarship based on your final cumulative average. Please refer to the chart (below) for award levels.

International Student Entrance Scholarship

\$2,000-\$5,000

As an international student, you will automatically be considered for the International Student Entrance Scholarship. Please refer to the chart (below) for award levels.

For scholarship consideration, we convert your grades to the Canadian equivalent to determine your final admission average.

Award levels for Transfer and International Student Entrance Scholarships	
Scholarship	Final/Cumulative Average
\$5,000	90% or above
\$4,000	85-89.9%
\$3,000	80-84.9%
\$2,000	75-79.9%

All applicants will receive an estimate of their entrance scholarship amount included in their offer of admission. An increase in your final/cumulative admission average may increase your scholarship amount.

For full details on all of our scholarships, bursaries and awards, please visit guelphhumber.ca/futurestudents.

Founders' Academic Merit Scholarship

\$20,000

We are proud to recognize ten outstanding students each year who have demonstrated high academic achievement and superior leadership ability and potential. Each recipient is eligible to receive \$5,000 per academic year over four years of full-time study, for a total of \$20,000.

To be considered for this scholarship you must be entering postsecondary studies for the first time and have a minimum 90% admission average. To retain the scholarship in your second, third and fourth years you must be a full-time student and maintain an 80% average in each of the fall and winter semesters prior to renewal. Apply online by February 28, 2017 at guelphhumber.ca/futurestudents.

Registrar's Need-Based Entrance Bursary

\$2,000

Based on financial need. Apply online at guelphhumber.ca/futurestudents by April 15, 2017.

Available to applicants who have never attended postsecondary.

Specialist High Skills Major Entrance Award

\$500

The University will award a \$500 scholarship to qualifying applicants who have completed one of the following Specialist High Skills Majors (SHSMs) and have a red seal on their high school diploma.

- > Arts and Culture
- > Business
- > Health and Wellness
- > Information and Communications Technology
- > Justice, Community Safety & Emergency Services
- > Non-profit
- > Sports

You must have a minimum final admission average of 80%. No additional application is needed, but to be considered for the SHSM Entrance Award check off the applicable box on your OUAC application. Available to high school applicants only.

In-course awards

To recognize achievements and financial need, we offer a variety of awards to students in each year of study. Check online at guelphhumber.ca/futurestudents to see our full range of academic merit scholarships, need-based bursaries, and community involvement, volunteerism and leadership scholarships.

New! Study Abroad Grants

\$1,500-\$2,500

The University now offers more than 50 grants for eligible students involved in study abroad courses, ranging from \$1,500 to \$2,500.

How to find additional funding

- Research government programs, such as OSAP.
- Look into scholarships offered by employers of your family and friends.
- Search online for websites that promote scholarships for postsecondary education based on a range of factors (not just academics).





THINK INVESTMENT

University is an investment in your future. Knowing the costs can help you plan ahead and meet your goals.

Domestic (Canadian) tuition and fees

Item	Fall & Winter Semesters
Tuition (based on program)	\$6,379-\$8,577
Student Fees*	\$1,007

*Mandatory student fees include athletics, technology, health care and dental.

Other expenses

Everyone's needs vary. Below is a list of estimated costs for education-related expenses. Use those that apply to you to help estimate your financial needs.

Item	Fall & Winter Semesters
Books	\$1,240
Parking Permits	\$465-\$578
Transit Passes	\$896-\$1,480

Residence

Item	Fall & Winter Semesters
Accommodation	\$6,071-\$7,624
Food (on-campus meal plan)	\$2,350 (option 1) \$2,850 (option 2) \$3,400 (option 3)

International student tuition and fees

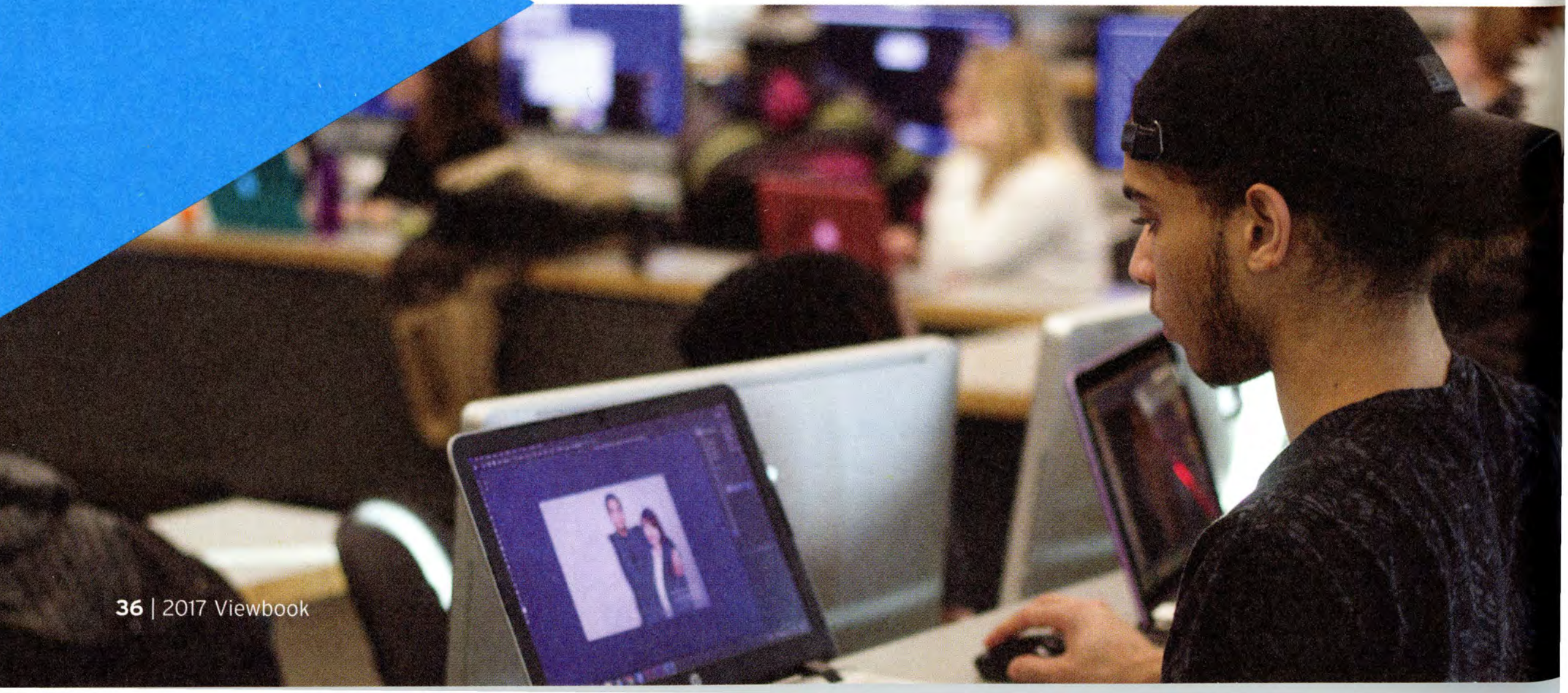
Item	Fall & Winter Semesters
Tuition (based on program)	\$20,233-\$22,240
Student Fees*	\$1,007
Health Insurance	\$375

*For a complete list of fees visit guelphhumber.ca/futurestudents.

Please note: All values listed are estimates only based on 2016-17 rates and therefore subject to change.

Payment timeline

The University of Guelph-Humber operates on a semester billing system to help you spread out the cost of tuition.



University of Guelph

One of the top comprehensive universities in Canada.



We are dedicated to protecting and cultivating the essentials for quality of life—water, food, environment, health, community, commerce and culture. We are strengthening our global reputation as a leader in innovative research and teaching excellence.

As a University of Guelph student, you are put at the centre of everything we do. Establish yourself at a university with an internationally recognized reputation, a challenging variety of academic programs, state-of-the-art facilities, award-winning faculty and a population of more than 20,000 students. Find yourself in an environment and community in which you can thrive on every level.

Degree programs

- › Bachelor of Applied Science
- › Bachelor of Arts
- › Bachelor of Arts and Sciences
- › Bachelor of Bio-Resource Management
- › Bachelor of Commerce
- › Bachelor of Computing
- › Bachelor of Engineering
- › Bachelor of Landscape Architecture
- › Bachelor of Science
- › Bachelor of Science in Agriculture
- › Bachelor of Science in Environmental Sciences
- › Doctor of Veterinary Medicine

Beyond the classroom

- › Over 3,000 co-op students in more than 30 co-op programs.
- › 74 international exchange programs in 36 countries.
- › More than 16,500 students in varsity and intramural athletic programs.
- › More than 200 non-academic student clubs.
- › First-year residence guarantees* with a variety of accommodation choices.
- › Express GO Transit service from Brampton and Mississauga.
- › Food services ranked #1 in Canada for 10 years in a row!

Location

The University of Guelph is located less than one hour west of Toronto. With a population of over 121,000, the city of Guelph is recognized for its environmental sustainability, volunteerism and its vibrant arts community. It is proud to be known as one of Canada's safest cities and smartest communities. With all the amenities of a bigger city, and a small-town feel, the campus and the city offer you a perfect balance of academics and community.

How to apply

All applicants can begin their applications in early October 2016. The online form is available at ouac.on.ca.

Canadian high school students are encouraged to apply by January 11, 2017 in order to be considered for all rounds of admission. Transfer and international students should visit uoguelph.ca for specific application deadlines.

**Please note: Residence is guaranteed for all first-year students provided they apply and submit their deposit by the June 1, 2017 deadline.*

Come visit us—book a tour

For more information about the University of Guelph, contact:

Admission Services
519.824.4120 ext. 58721
admission.uoguelph.ca/tours
admission@uoguelph.ca





I am currently enrolled in an Ontario high school

> HIGH SCHOOL APPLICANT

How to Apply

Apply online: ouac.on.ca (Ontario Universities' Application Centre website) using the 101 form.

Deadline: January 11, 2017.

Choose your program: University of Guelph-Humber programs are listed under the University of Guelph section of the OUAC application.

Application fees: You will pay an OUAC application fee of \$150 for your first three program choices. Each additional program choice is \$50. If you remove a program choice and add a new one at the same university, there is no additional fee.

Rank: If you apply to more than one program at the University of Guelph-Humber, you can expect to receive only one offer of admission from the University. The highest ranked choice will be considered first. Only in the event that you are not admissible to your highest choice will your next choice be considered. If you want to reorder your UofGH program rankings, please amend your application on the OUAC website by April 15, 2017.

Requirements: Ontario Secondary School Diploma (OSSD) and an admission average calculated using your top six 4U/M courses, including the subject requirements noted in the chart below.

Program and OUAC Code	Subject Requirements	Estimated Cut-off Range
Business (GDB)	> ENG4U > any 4U math > four additional 4U/M courses	75%-80%
Early Childhood Studies (GHE)	> ENG4U > five additional 4U/M courses	75%-80%
Family and Community Social Services (GHF)	> ENG4U > five additional 4U/M courses	75%-80%
Justice Studies (GMP)	> ENG4U > five additional 4U/M courses	75%-80%
Kinesiology (GHK)	> ENG4U > any 4U math > any two from SBI4U, SCH4U, SPH4U or PSE4U/PSK4U > two additional 4U/M courses	75%-80%
Media Studies (GMT)	> ENG4U > five additional 4U/M courses	75%-80%
Psychology (GMA)	> ENG4U > five additional 4U/M courses	75%-80%

Estimated cut-off range: Estimated cut-off admission ranges are based on the admission averages from previous years and are provided solely as a point of reference. Exact cut-offs for the current cycle will be determined once applications are received. Possession of an admission average within the estimated cut-off range does not guarantee an offer of admission.

Please note: (a) The non-academic component of 4U/M Co-op courses is not considered for admission requirements. (b) Courses valued at 1.5 credits or greater will be considered equivalent to one credit. (c) The University will only accept courses approved by the Ontario Ministry of Education.

Repeated courses: The University will use the highest grade reported from a Ministry-approved institution for any repeated courses.

Transcripts: Currently enrolled full-time in an Ontario high school? Your grades will automatically be submitted by your high school.

Student Profile: The Student Profile (SP) is your opportunity to tell us about factors that may have impacted your grades. If your admission average does not meet the cut-off for the program to which you have applied, your SP may be considered if your average is within a discretionary range of the determined cut-off range (up to 5%). If you have an admission average of 70-74.9%, it is strongly recommended that you submit a SP to be considered for admission. Profiles must be completed online at quelphumber.ca/futurestudents and are due May 1, 2017.

Advanced Placement and International Baccalaureate: Please see respective sections on page 43.

English language requirements: You will be required to provide proof of English proficiency if English is not your first language and you have studied less than four years in an English language school (minimum high school level). Please refer to the "International Applicant" section, page 42, for more information.

Have you been away from high school for seven months or more?

Please apply using the 105D form by May 1, 2017. You must meet high school student admission requirements and will be required to submit your official high school transcripts. We will send you a list of required documents that are due to Admission Services by June 1, 2017.

Timing of offers

Date	Basis of Calculation
Late January to February 1st round	Top six completed 4U/M (or equivalent courses), including subject requirements. Where six 4U/M courses are not available, completed 3U/M courses, including subject requirements, will be used.
Early March to Mid-April 2nd round	Semestered Schools: Top six completed 4U/M (or equivalent courses), including subject requirements. Where six 4U/M courses are not available completed 3U/M courses, including subject requirements, will be used. Non-Semestered Schools: Top six completed or in-progress 4U/M courses including subject requirements, will be used.
Late April to Mid-May Final round	Top six completed or in-progress 4U/M courses, including subject requirements, will be used.

Please note: If you do not receive an offer of admission in the first round of offers sent, there remains the opportunity for you to receive an offer in subsequent rounds.

Accepting your offer

If you receive an offer of admission, you will receive an email and offer package in the mail. To accept your offer, do so online at ouac.on.ca by June 1, 2017.

Please see page 48 for a complete list of important dates.



I am applying from another province within Canada

OUT OF PROVINCE HIGH SCHOOL APPLICANT

How to Apply

Apply online: ouac.on.ca (Ontario Universities' Application Centre website) using the 105D form.

Deadline: January 11, 2017.

Choose your program: University of Guelph-Humber programs are listed under the University of Guelph section of the OUAC application.

Application fees: You will pay an OUAC application fee of \$156 for your first three program choices and an assessment fee of \$80. Each additional program choice is \$50. If you remove a program choice and add a new one at the same university, there is no additional fee.

Rank: If you apply to more than one program at the University of Guelph-Humber, you can expect to receive only one offer of admission from the University. The highest ranked choice will be considered first. Only in the event that you are not admissible to your highest choice will your next choice be considered. If you want to reorder your UofGH program rankings, please amend your application on the OUAC website by April 15, 2017.

Estimated cut-off range: Please refer to details on page 38.

Requirements: You must have a high school diploma with the respective provincial requirements (see below).

British Columbia - Four acceptable academic grade 12 courses, inclusive of subject requirements.

Alberta - Five courses numbered 30 or 31 with weight of 5, inclusive of subject requirements.

Manitoba - Five full credits at senior level 4, with a minimum of three 40S courses, inclusive of subject requirements.

Program and OUAC Code	British Columbia	Alberta	Manitoba
Business (GDB)	> English 12 > Pre-Calculus 12, Calculus 12 or Foundations of Math 12	> English 30-1 > Math 30-1, Math 30-2 or Math 31	> English Language Arts 40S > one from Pre-Calculus 40S, Calculus 45A or 45S or Applied Math 40S
Early Childhood Studies (GHE)	> English 12	> English 30-1	> English Language Arts 40S
Family and Community Social Services (GHF)	> English 12	> English 30-1	> English Language Arts 40S
Justice Studies (GMP)	> English 12	> English 30-1	> English Language Arts 40S
Kinesiology (GHK)	> English 12 > Pre-Calculus 12, Calculus 12 or Foundations of Math 12 > two from Biology 12, Chemistry 12 or Physics 12	> English 30-1 > Math 30-1, Math 30-2 or Math 31 > two courses from Biology 30, Chemistry 30 or Physics 30	> English Language Arts 40S > one from Pre-Calculus 40S, Calculus 45A or 45S or Applied Math 40S > two courses from Biology 40S, Chemistry 40S or Physics 40S
Media Studies (GMT)	> English 12	> English 30-1	> English Language Arts 40S
Psychology (GMA)	> English 12	> English 30-1	> English Language Arts 40S

Please visit guelphhumber.ca/futurestudents for a complete listing of provincial admission requirements.

Repeated courses: The University will use the highest grade reported from a Ministry-approved institution for any repeated courses.

Transcripts: You must arrange to have your most current grade results sent **by mail** to Admission Services to meet the April 15, 2017 deadline. Documents must be submitted in a sealed envelope from the originating institution.

Student Profile: The Student Profile (SP) is your opportunity to tell us about factors that may have impacted your grades. If your admission average does not meet the cut-off for the program to which you have applied, your SP may be considered if your average falls within a discretionary range of the determined cut-off range (up to 5%). If you have an admission average of 70-74.9%, it is strongly recommended that you submit a SP to be considered for admission. Profiles must be completed online at guelphhumber.ca/futurestudents and are due May 1, 2017.

Advanced Placement and International Baccalaureate: Please see respective sections on page 43.

English language requirements: Please refer to details found on page 42.

Tracking your application

Once we've received your application, we will email and mail you your login and password to WebAdvisor, our online student system. This account allows you to track your application status and lists all the documents required.

Accepting your offer

If you receive an offer of admission, you will receive an email and an offer package in the mail. To accept an offer, you must do so online at ouac.on.ca by June 1, 2017.

I am attending postsecondary for the first time and I am over 21 years of age

(and away from high school for at least two full years)

> MATURE APPLICANT

How to Apply

Apply online: ouac.on.ca (Ontario Universities' Application Centre website) using the 105D form.

Deadline: May 1, 2017.

Choose your program: University of Guelph-Humber programs are listed under the University of Guelph section of the OUAC application.

Application fees: You will pay an OUAC application fee of \$156 for your first three program choices and an assessment fee of \$80. Each additional program choice is \$50. If you remove a program choice and add a new one at the same university, there is no additional fee.

Rank: If you apply to more than one program at the University of Guelph-Humber, you can expect to receive only one offer of admission from the University. The highest ranked choice will be considered first. Only in the event that you are not admissible to your highest choice will your next choice be considered. If you want to reorder your UofGH program rankings, please amend your application on the OUAC website.

Requirements: Ontario Secondary School Diploma (OSSD) and an admission average calculated using a minimum of three 4U/M courses, including program-specific subject requirements noted in the chart (right).

Estimated cut-off range: Estimated cut-off admission ranges are based on the admission averages from previous years and are provided solely as a point of reference. Exact cut-offs for the current cycle will be determined once applications are received. Possession of an admission average within the estimated cut-off range does not guarantee an offer of admission.

Program and OUAC Code	Subject Requirements	Estimated Cut-off Range
Business (GDB)	> ENG4U > any 4U math > one additional 4U/M course	75%-80%
Early Childhood Studies (GHE)	> ENG4U > two additional 4U/M courses	75%-80%
Family and Community Social Services (GHF)	> ENG4U > two additional 4U/M courses	75%-80%
Justice Studies (GMP)	> ENG4U > two additional 4U/M courses	75%-80%
Kinesiology (GHK)	> ENG4U > any 4U math > any two from SBI4U, SCH4U, SPH4U or PSE4U/PSK4U	75%-80%
Media Studies (GMT)	> ENG4U > two additional 4U/M courses	75%-80%
Psychology (GMA)	> ENG4U > two additional 4U/M courses	75%-80%

Please note: (a) The non-academic component of 4U/M Co-op courses is not considered for admission requirements. (b) Courses valued at 1.5 credits or greater will be considered equivalent to one credit. (c) The University will only accept Ontario Ministry of Education approved courses.

Repeated courses: The University will use the highest grade reported from a Ministry-approved institution for any repeated courses.

Required documents: Submit all official high school transcripts by June 1, 2017 in addition to any other documents that may be requested. Documents must be submitted in a sealed envelope from the originating institution or requested from the OUAC.

English language requirements: Please refer to details found on page 42.

Tracking your application

Once we've received your application, we will email and mail you your login and password to WebAdvisor, our online student system. This account allows you to track your application status and lists all the documents required. You can expect to receive a decision as early as three weeks following the submission of all required documents.

Please see page 48 for a complete list of important dates.

Accepting your offer

If you receive an offer of admission, you will receive an email and an offer package in the mail. To accept your offer, do so online at ouac.on.ca by the deadline indicated in your offer letter.

I am applying from a country other than Canada

INTERNATIONAL APPLICANT

How to Apply

You are considered an international applicant if you are not a Canadian Citizen, Permanent Resident or Protected Person, and you have attended high school or postsecondary school inside or outside of Canada.

Apply online: ouac.on.ca (Ontario Universities' Application Centre website) using the 105F form.

Deadline: March 1, 2017.

Choose your program: University of Guelph-Humber programs are listed under the University of Guelph section of the OUAC application.

Application fees: You will pay an OUAC application fee of \$156 for your first three program choices and an assessment fee of \$80. Each additional program choice is \$50. If you remove a program choice and add a new one at the same university, there is no additional fee.

Rank: If you apply to more than one program at the University of Guelph-Humber, you can expect to receive only one offer of admission from the University. The highest ranked choice will be considered first. Only in the event that you are not admissible to your highest choice will your next choice be considered. If you want to reorder your UofGH program rankings, please amend your application on the OUAC website by April 15, 2017.

Requirements: International applications are individually assessed on country-specific data. Country-specific admission requirements can be found at guelphhumber.ca/futurestudents.

You should include among your senior level courses specific subject requirements at the advanced level that are required for admission to the degree program of your choice. Fulfilling minimum requirements does not guarantee entry.

Transcripts and required documents: Official high school and college/university transcripts should be sent directly to the University of Guelph-Humber from the originating institution in a sealed envelope.

International high school applicants are encouraged to submit a Student Profile on our website, guelphhumber.ca/futurestudents.

Students meeting the minimum requirements will be considered for admission on an ongoing basis as soon as all required documentation has been received. The document deadline is March 1, 2017.

English language requirements: You will be required to provide proof of English proficiency if English is not your first language and you have studied less than four years in an English language school (minimum high school level). Successful completion of the University of Guelph's Open Learning and Education Support advanced level of the English Language Certificate Program is considered an acceptable form of testing for English proficiency. Proof of English proficiency must be provided with your required documents.

Exam	Admission Requirements
CAEL	Minimum overall band score of 70.
IELTS	Minimum overall score of 6.5 with no band less than 6.
MELAB	Minimum overall score of 85 including composition score of 83 and oral score of 3.
PTE	Minimum overall score 60 with no score less than 60 in the individual components.
TOEFL	Internet-based: minimum total score of 89 with no individual scaled score less than 21. Institutional code is 0892.

Tracking your application

Once we've received your application, we will email and mail you your login and password to WebAdvisor, our online student system. This account allows you to track your application status and lists all the documents required. You can expect to receive a decision as early as three weeks following the submission of all required documents.

Please see page 48 for a complete list of important dates.

Accepting your offer

If you receive an offer of admission, you will receive an email and an offer package in the mail. To accept your offer, do so online at ouac.on.ca by the deadline indicated in your offer letter.

For information on how to apply for Student Permits and Visas, please visit the Citizenship and Immigration Canada website at cic.gc.ca.

Other Curriculum

Advanced Placement (AP)

Advanced Placement exam results of four or more may qualify for university credit to a maximum of 2.0 credits (four courses). Official transcripts are required.

International Baccalaureate (IB)

Ontario high school students registered in an IB program will automatically have their IB courses converted into Ontario U- and M-level equivalents. If you are applying with an IB diploma, you require a minimum score of 24 with six subjects: three higher level and three standard level, including subject-specific requirements for the program to which you are applying. If you are currently enrolled in IB, submit your predicted IB final results. Transfer credit may be given for higher level courses with grades of five or better.

For more IB information, visit guelphhumber.ca/futurestudents.

Document Submission

Admission Services

Documents must be submitted in a sealed envelope from the originating institution or requested from the OUAC when applicable.

Please note that documents submitted in support of an application become the property of the University and will not be returned. Documents are protected under provincial privacy legislation.

For questions and to submit your documents, please contact us at:

416.798.1331 ext. 6056
info@guelphhumber.ca

University of Guelph-Humber
Admission Services
207 Humber College Blvd
Toronto, ON M9W 5L7



I am applying from or have attended another college or university

> TRANSFER APPLICANT

Transfer students fall into one of three categories:

- Transferring from a diploma program that has been deemed “high-affinity”
- Transferring with a diploma or coursework from a recognized college program
- Transferring with coursework from a recognized university program

International students with postsecondary experience, please refer to guelphhumber.ca/futurestudents.

College High-Affinity Diploma Transfer Applicants

High-affinity diplomas: A college high-affinity diploma program is one that has been determined to have academic alignment with a University of Guelph-Humber program and has met specific high school subject admission requirements. If you are transferring from a high-affinity diploma program, you are eligible to receive a block of pre-determined transfer credit. Diplomas must be granted by a recognized institution.

High-affinity diplomas are listed in the chart to the right.

Estimated cut-off range: If you are transferring from a high-affinity diploma program, you may be considered for admission based on your cumulative admission average.

Estimated cut-off cumulative admission averages are provided as a point of reference. Exact cut-offs for programs for the current cycle will be determined by the applications received and the number of places available in each program. Possession of a cumulative admission average within the cut-off range does not guarantee an offer of admission.

Program and OUAC Code	High-Affinity Diplomas	Estimated Cut-off Cumulative Admission Average
Business (GDB)	Diploma in Accounting; Business Administration; Finance; Management; or Marketing	75%
Early Childhood Studies (GHE)	Diploma in Early Childhood Education	75%
Family and Community Social Services (GHF)	Child and Youth Care; Child and Youth Worker; Developmental Services Worker; or Social Service Worker diplomas	75%
Justice Studies (GMP)	Diploma in Community and Justice Services; Law and Security Administration; Police Foundations; or Protection, Security and Investigation	75%
Kinesiology (GHK)	Diploma in Fitness and Health Promotion; Fitness and Lifestyle Management; or Health, Wellness and Fitness	75%
Media Studies (GMT)	Diploma in Digital Communications; Image Arts/Photography; Journalism; Media Communications or Public Relations	75%
Psychology (GMA)	Diploma in General Arts and Science	75%

Transfer credit assessment: If you are transferring from a high-affinity diploma program you may be eligible to receive the following transfer credits:

Up to **5.0 credits** granted for a completed two-year recognized diploma with the minimum cumulative average for the respective program. Equivalent to approximately 10 courses/1 year.

Up to **10.0 credits** granted for a completed three-year recognized diploma with the minimum cumulative average for the respective program. Equivalent to approximately 20 courses/2 years.

An official Transfer Credit Assessment will be included with your offer of admission.

Once enrolled at the University, your course sequencing may be adjusted based on your transfer credits. For example, your first year may include courses from semester one to eight.

Vulnerable sector screening: Depending on your Transfer Credit Assessment, the placement/internship component of your program can begin as early as your first semester at the University. You may be required to complete a Vulnerable Sector Screening before your placement/internship begins. Please visit guelphhumber.ca/placements for additional details.

University or General College Transfer Applicants

If you have completed coursework at university or other college programs, you may be eligible to receive transfer credit for similar or applicable coursework.

Admission average: University applicants must have a minimum cumulative average of 70% for consideration.

General college transfer applicants must have a minimum cumulative average of 75% to be considered for admission.

Subject requirements: Please refer to the chart (right) for high school subject requirements per program. You may have completed the equivalent of these subject requirements through college or university coursework, which will be determined through course syllabi evaluations once you apply. Specific college course equivalents for the courses in the chart can be found on our website.

Program and OUAC Code	Subject Requirements
Business (GDB)	> ENG4U > any 4U math
Early Childhood Studies (GHE)	> ENG4U
Family and Community Social Services (GHF)	> ENG4U
Justice Studies (GMP)	> ENG4U
Kinesiology (GHK)	> ENG4U > any 4U math > any two from SBI4U, SCH4U, SPH4U or PSE4U/PSK4U
Media Studies (GMT)	> ENG4U
Psychology (GMA)	> ENG4U

Transfer credit assessment: Your completed postsecondary coursework will be assessed for relevance and credit awarded where applicable. Transcripts, in addition to course syllabi and other supporting documents, will be evaluated at the time of admission to determine potential transfer credit. An official Transfer Credit Assessment will be included with your offer of admission.

Once enrolled at the University, your course sequencing may be adjusted based on your transfer credits. For example, your first year may include courses from semester one to eight.

Vulnerable sector screening: Depending on your Transfer Credit Assessment, the placement/internship component of your program can begin as early as your first semester at the University. You may be required to complete a Vulnerable Sector Screening before your placement/internship begins. Please visit guelphhumber.ca/placements for additional details.

How to Apply

Apply online: ouac.on.ca (Ontario Universities' Application Centre website) using the 105D form.

Deadline: Deadlines are dependent on your entry date. Please refer to the "Important deadlines" section, page 47.

Application fees: You will pay an OUAC application fee of \$156 for your first three program choices and an assessment fee of \$80. Each additional program choice is \$50. If you remove a program choice and add a new one at the same university, there is no additional fee.

Choose your program and entry point: University of Guelph-Humber programs are listed under the University of Guelph section of the OUAC application. You will only be admitted to the entry point for which you have applied. Your start date cannot be deferred. If you wish to be considered for a different entry point you will be required to change your OUAC application or re-apply through the OUAC.

Winter (January) entry

Business

Are you transferring with a high-affinity business diploma or from another university business program? If so, then you are eligible for winter (January) entry to our Business program. A select number of courses will be available in the winter semester. Note: Commencing studies in January does not guarantee faster program completion.

Summer (May) bridge entry

Early Childhood Studies

Are you transferring with a high-affinity early childhood education diploma? If so, then you are eligible for summer (May) entry to our Early Childhood Studies program. The May to August semester is considered a "bridging semester", which allows you to fast-track your degree. Courses will be in a hybrid format of online and on-campus weekend classes (two per month).

Family and Community Social Services

Are you transferring with a Social Service Worker diploma? If so, then you are eligible for summer (May) entry to our Family and Community Social Services program. The May to August semester is considered a "bridging semester", which allows you to fast-track your degree.

Kinesiology

Are you transferring with a high-affinity kinesiology diploma? If so, then you are eligible for summer (May) entry to our Kinesiology program. From May to August is considered a "bridge" to gain entry into semester five in September. Applications for fall (September) entry are not recommended due to limited space availability.

Fall (September) entry

September entry for transfer students is available **for all programs**.

Rank: If you apply to more than one program at the University of Guelph-Humber, you can expect to receive only one offer of admission from the University. The highest ranked choice will be considered first. Only in the event that you are not admissible to your highest choice will your next choice be considered. If you want to reorder your UofGH program rankings, please amend your application on the OUAC website.

Required documents: Submit any and all official transcripts from high school and postsecondary institution(s) attended by the respective deadline under "Important deadlines" on page 47, in addition to any other documentation that may be requested.

Once all documents have been received your application will be reviewed for admission. You are encouraged to apply and submit all documentation as soon as possible. Postsecondary students currently enrolled in studies are encouraged to send interim grades. Due to space limitations within programs, admission consideration cannot be guaranteed for applications and documents that are received after the deadline dates. Should you choose to re-apply for a future entry point you will be required to re-submit your documents.

Official Ontario college and university transcripts can be requested online through the OUAC. A service fee does apply. You may also be required to request the originating institution(s) send your official transcripts in a sealed envelope directly to the University at the address provided.

Send documents to:

University of Guelph-Humber
Admission Services
207 Humber College Blvd
Toronto, ON M9W 5L7

Please note: Documents submitted in support of an application become the property of the University and will not be returned. Documents are protected under provincial privacy legislation.

English language requirements: You will be required to provide proof of English proficiency if English is not your first language and you have studied less than four years in an English language school (minimum high school level). Please visit guelphhumber.ca/futurestudents for more information.

Tracking your application

Once we've received your application, we will email and mail you your login and password to WebAdvisor, our online student system. This account allows you to track your application status and lists all the documents required. You can expect to receive a decision as early as three weeks following the submission of all required official documents.

Important deadlines

Winter (January) entry

November 15, 2016: Application deadline.
Apply online at ouac.on.ca.

December 1, 2016: Document deadline.
Send in all official transcripts (high school and postsecondary) and any other documents requested.

Summer (May) bridge entry

February 1, 2017: Application deadline.
Apply online at ouac.on.ca.

March 1, 2017: Document deadline. Send in all official transcripts (high school and postsecondary) and any other documents requested.

Fall (September) entry

May 1, 2017: Application deadline.
Apply online at ouac.on.ca.

June 1, 2017: Document deadline. Send in all official transcripts (high school and postsecondary) and any other documents requested.

Please see page 48 of the Viewbook for a complete list of important dates.

DOCUMENT CHECKLIST

- Official high school transcripts
- Official transcripts from all postsecondary institutions attended
- Detailed course syllabi
(Required for university and general college transfer applicants.)
- English proficiency results
(If applicable, please see page 42 for more information.)
- Activities form
(If applicable, will be sent to you for completion.)
- Supplemental information
(Optional. Any additional documents you wish to submit to support your application outlining circumstances that may have impacted your academic performance.)

Please allow ample time for collection of documents prior to document deadlines.

Accept your offer

If you receive an offer of admission, you will receive an email and an offer package in the mail. To accept your offer, do so online at ouac.on.ca by the deadline indicated in your offer letter.



THINK AHEAD: Mark Your Calendar!

High School Applicants

January 11, 2017

OUAC application deadline for September 2017.

Late January 2017

First round of offers of admission sent.

February 3, 2017

OUAC recommended last day to submit changes or additional choices to an application to be considered for early admission.

February 28, 2017

Deadline to apply to the Founders' Academic Merit Scholarship.

Early March 2017

Second round of offers of admission sent.

April 15, 2017

Registrar's Need-Based Bursary application deadline.

Transcripts due for Canadian applicants outside of Ontario.

Deadline to re-order your program rankings on your OUAC application, if applicable.

Late April 2017

Final round of offers of admission sent.

May 1, 2017

Application deadline for applicants who have been out of high school for seven months or more.

Deadline for Student Profile.

May 26, 2017

Deadline for all applicants to receive an admission decision.

June 1, 2017

Last day to accept an offer of admission on ouac.on.ca.

Deadline for residence applications.

Document deadline for applicants who have been out of high school for seven months or more.

Transfer, Mature and International Applicants

October 3, 2016

Residence applications start to be accepted for transfer students applying for January entry.

November 15, 2016

Transfer student application deadline for winter (January) 2017 entry.

December 1, 2016

Document deadline for transfer students applying for winter (January) 2017 entry.

February 1, 2017

Transfer student application deadline for summer (May) 2017 entry.

Residence applications start to be accepted for transfer students applying for May entry.

March 1, 2017

Document deadline for transfer students applying for summer (May) 2017 entry.

International student application and document deadline for fall (September) 2017 entry.

May 1, 2017

Application deadline for mature and transfer students applying for fall (September) 2017 entry to all programs.

June 1, 2017

Document deadline for mature and transfer students applying for fall (September) 2017 entry to all programs.

Deadline for residence applications for fall (September) entry.

Note: Beginning in December, mature, transfer and international student applications are reviewed on an ongoing basis. Applicants can expect to receive a decision as early as three weeks following the submission of all required documents.



EXPERIENCE FIRST-HAND

Get a feel for what life will be like as a University of Guelph-Humber student!

On-campus events

For full details on all of our events and to register, visit guelphhumber.ca/futurestudents.

Fall Information Day

November 13, 2016

Learn about the University, your program of interest, speak with program heads and campus services representatives, tour campus and more.

Program Preview Day: Business and Media Studies

March 5, 2017

Discover our Business and Media Studies programs by joining us on campus for information sessions hosted by our faculty, current students and alumni.

March Break Tours

March 13-17, 2017

Led by current University of Guelph-Humber students, tours are a great opportunity to see our dynamic learning environment in Toronto and get a feel for the small-campus community.

Program Preview Day: Applied Sciences

April 2, 2017

Discover our Early Childhood Studies, Family and Community Social Services, Justice Studies, Kinesiology and Psychology programs by joining us on campus for information sessions hosted by our faculty, current students and alumni.

Next Steps

May 18 & 25, 2017

To help you with any remaining questions, this event offers another opportunity to speak with key support services staff and current students, and take part in an interactive session on your next steps.

Campus tours

Tours of campus, led by current students, are available throughout the year. Book a tour online at guelphhumber.ca/futurestudents.

Questions? Contact us

416.798.1331 ext. 6056
guelphhumber.ca/futurestudents
info@guelphhumber.ca

FIND US ON:



uoguelphhumber



guelphhumber



ChooseGuelphHumber



guelphhumber

Say Cheese!

We are proud to have students as part of our team. In 2015-16 the following students contributed to photography for publications like this Viewbook.



Christina Tanel, Student Photographer

Christina is a recent graduate of our Media Studies program. Her passion to create is what inspires her work and keeps her looking to learn and grow in this field.



Juan Lasso-Arango, Student Photographer

Juan is a recent graduate of our Psychology program. He is passionate about photography and strives for creativity and originality in his work.

UNIVERSITY OF GUELPH HUMBER

416.798.1331 ext. 6056

info@guelphhumber.ca

guelphhumber.ca/futurestudents



#GHfuturestudent

Doing our part

By using paper from responsible sources made with 10% post-consumer waste, the following resources were saved:



375 kg of solid waste



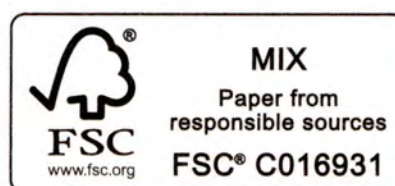
26 trees



46,711 litres of water



1,032 kg of CO₂



FSC® supports responsible forest management worldwide Rainforest Alliance works to conserve biodiversity and sustainable livelihoods

The University of Guelph-Humber makes every effort to ensure the information contained herein is as current and accurate as possible. The University reserves the right to make changes to policies, programs and services described in this publication without prior notice.

This document is available in alternative formats on request.

Environmental impact estimates were calculated using the Environmental Paper Network Paper Calculator Version 3.2. For more information visit www.papercalculator.org.

FSC is not responsible for any calculations on saving resources by choosing this paper.