

UNIVERSITY OF
GUELPH
HUMBER

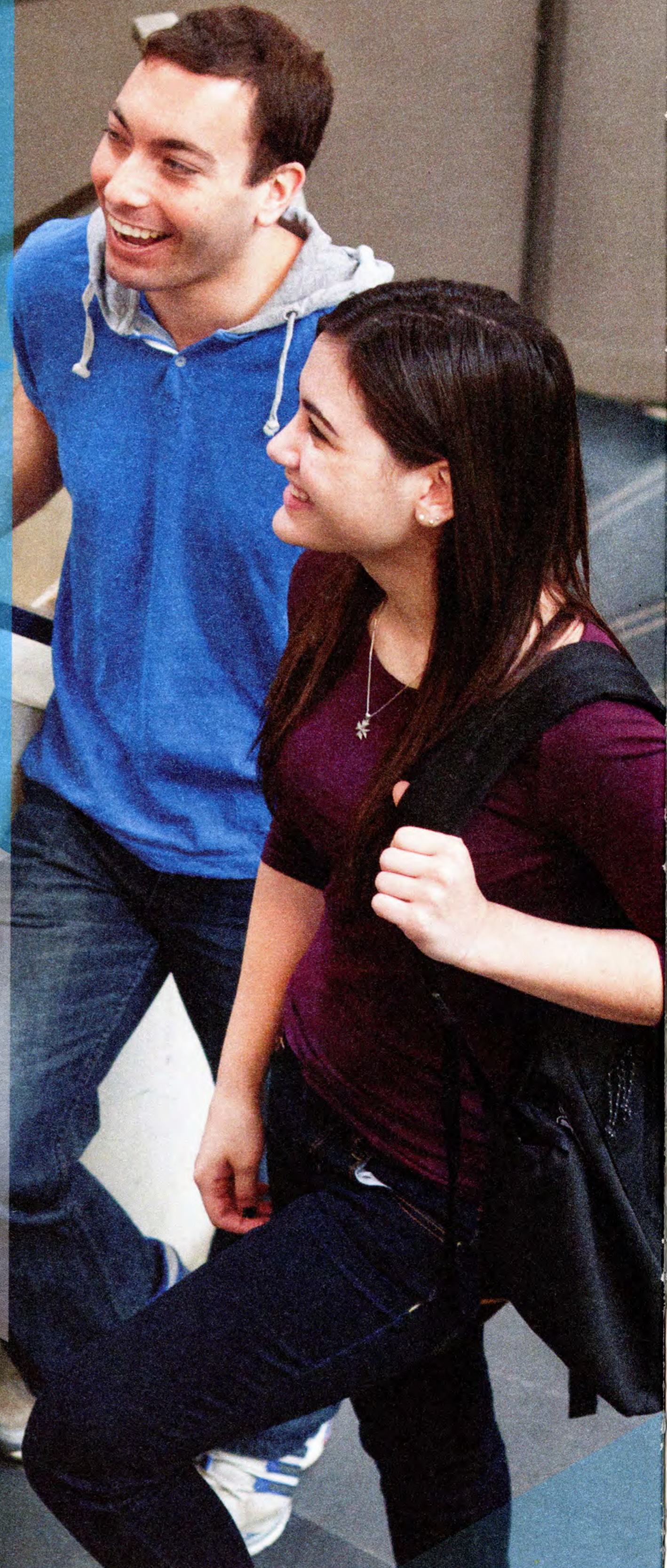
Toronto, ON



FORWARD THINKING, | 2016
PRACTICAL EXPERIENCE.

Inside

WHAT MAKES US DIFFERENT _____	1
SUPPORTING YOUR SUCCESS _____	3
ONE-OF-A-KIND PROGRAMS _____	6
BUSINESS _____	8
EARLY CHILDHOOD STUDIES _____	10
FAMILY AND COMMUNITY SOCIAL SERVICES _____	12
JUSTICE STUDIES _____	14
KINESIOLOGY _____	16
MEDIA STUDIES _____	18
PSYCHOLOGY _____	20
STUDENT SERVICES _____	22
CONNECTIONS _____	27
GETTING INVOLVED _____	28
SPORTS AND RECREATION _____	29
HOUSING _____	30
COMMUTING TO CAMPUS _____	31
SCHOLARSHIPS AND BURSARIES _____	34
TUITION _____	36
UNIVERSITY OF GUELPH _____	37
ADMISSION INFORMATION _____	38
IMPORTANT DATES _____	48
VISIT US _____	49



What Makes Us Different



Our partnership

A **COLLABORATION** between
UNIVERSITY OF GUELPH & HUMBER



Industry connections

EVERY PROGRAM HAS
WORKPLACE EXPERIENCE



2 credentials

EARN AN HONOURS
DEGREE + DIPLOMA
concurrently, in 4 years



Close-knit community

With a **POPULATION OF 4,300**
OUR AVERAGE CLASS SIZE IS
49 STUDENTS



Focused programs

Integration & practical
OF THEORY & EDUCATION
AN INTENSIVE, IMMERSIVE APPROACH



1 location

STUDY IN OUR
INNOVATIVE FACILITY IN
T O R O N T O

WHO WE ARE

The **University of Guelph** is ranked as one of Canada's top comprehensive universities, recognized for the high quality of teaching, research and outstanding facilities. Engaged in a wide variety of academic programs, their 22,446 students and 830 faculty members thrive on the cutting edge of their fields.

&

Humber College Institute of Technology & Advanced Learning is one of the nation's leading educational institutions, a student-focused polytechnic and Canada's largest college.

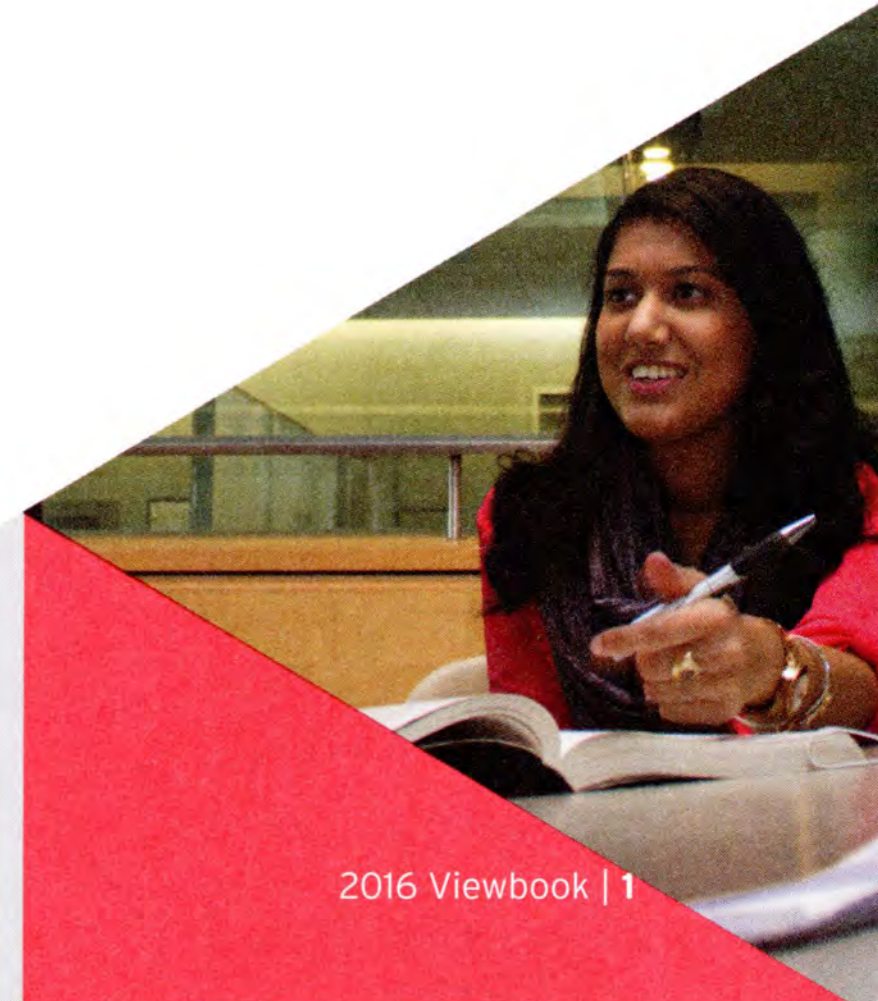
YOU ARE

A student who is **highly motivated** and **goal-oriented**.

Students who **choose us** want:

- > a university education
- > to learn in a culturally diverse environment
- > to do, not just know
- > a meaningful career in their field

UNIVERSITY OF
GUELPH
HUMBER



"We have hired Guelph-Humber graduates because of the level of preparation for working in the field that they gained through their placements."

> Andrea Zirger, Centre for Opportunities, Respect and Empowerment (CORE)





Supporting Your Success

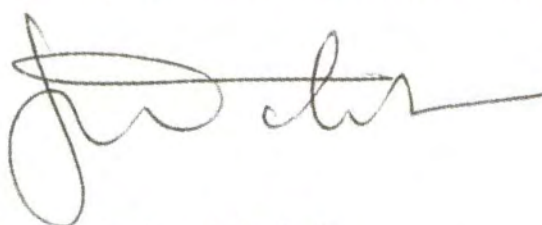
Selecting a university that's right for you is one of the most significant life decisions you will make. It takes careful consideration of what you want to accomplish. I invite you to visit us to see the campus, meet current students and faculty, and imagine yourself growing and learning as part of our close-knit community.

Choosing the University of Guelph-Humber means earning both a university honours degree and a diploma in four years of full-time study. If you want to be challenged academically and put that knowledge into practice while studying, we are the right choice for you. By earning two credentials, you will be better prepared to either move into the workforce or further study.

Your success is not just about earning a university degree and a diploma in four years: it's about taking those credentials and moving forward. For more than 10 years, the University of Guelph-Humber has fostered student success. Read on to learn about some of our current student and alumni successes.

Our unique, integrated curriculum will have you learning inside and outside the classroom. Our small classes allow you to study in a community where you know your professors and fellow students, and where ideas are shared and you build networks before you graduate.

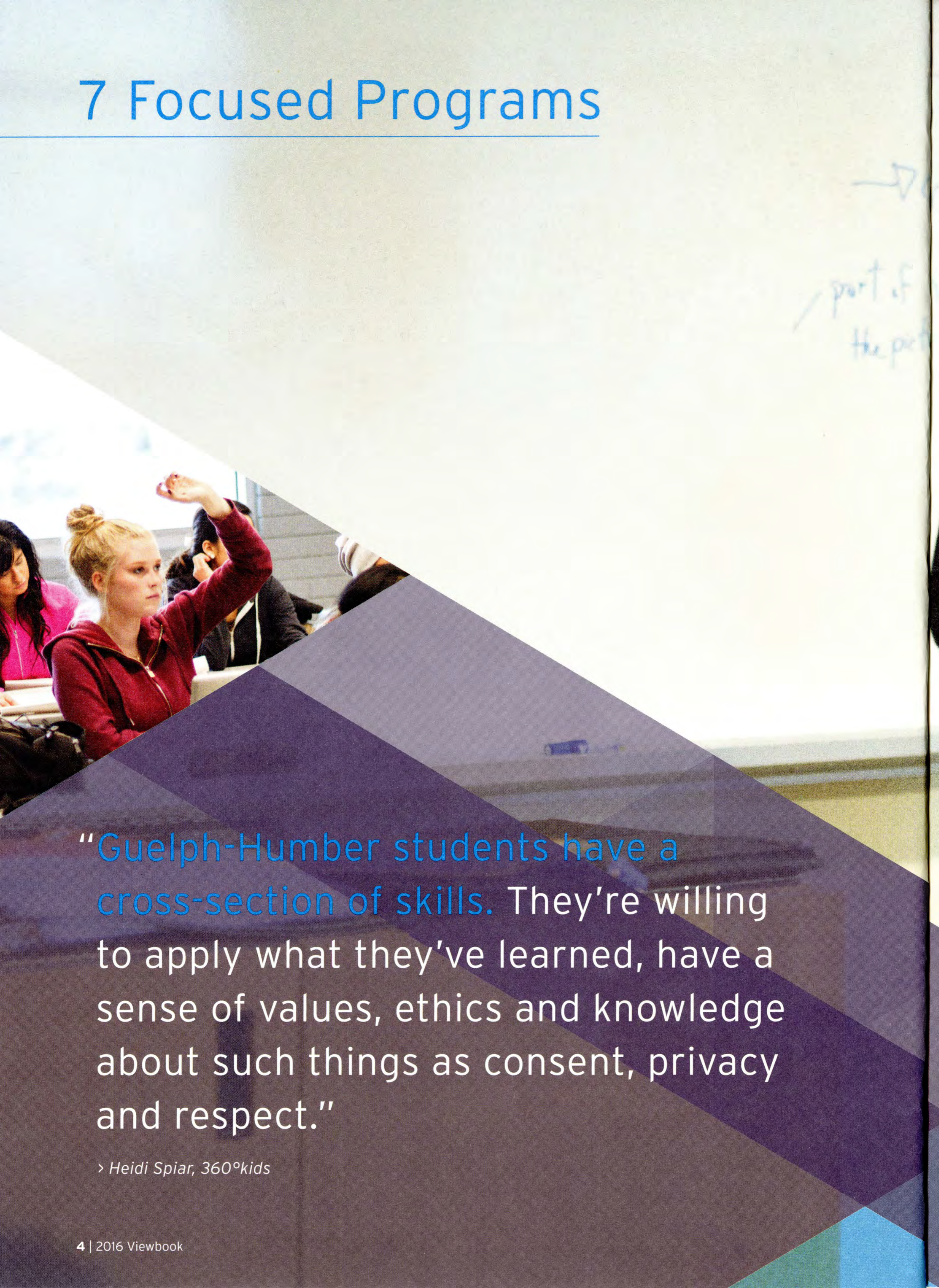
As you take the next step forward and begin your new journey, know that you are not alone. We are committed to helping you achieve your goals and making your years at the University of Guelph-Humber full of memories that will last a lifetime.



Dr. John Walsh

Vice-Provost, University of Guelph-Humber

7 Focused Programs



“Guelph-Humber students have a cross-section of skills. They’re willing to apply what they’ve learned, have a sense of values, ethics and knowledge about such things as consent, privacy and respect.”

> Heidi Spiar, 360°kids



One-of-a-kind Programs

Focused curriculum

Your courses will be focused: curriculum that challenges you academically and demands hands-on experience as you learn. You know what you want, and fewer electives means more content targeted to your area of study and your future career. We continue to be innovators with workplace experience an important part of every program.

Practising experts

Our faculty are experts in their field, keeping one foot in the classroom and one in the workplace and/or research to offer you real-world experience and connect you to professionals. Examples include:

- > Alice Balter, a professor in our Early Childhood Studies and Family and Community Social Services programs, works in health education and promotion focusing on child and adolescent health. She currently conducts research in the areas of sexuality, mental health and professional capacity building.
- > Dennis Chronopoulos, a professor in our Justice Studies program, is an Assistant Crown Attorney with the Ministry of the Attorney General who conducts trials in criminal matters before the Ontario Courts and has served as a Domestic Violence Coordinator.

“On study abroad in London and Berlin, I met industry professionals, explored different cultures and had an unforgettable educational experience.”

- > ***Vanessa Spagnuolo, Media Studies, 3rd year***

International perspectives

Study abroad

You have the opportunity to learn and explore the world. In the International Field Study course, you are part of a small group on an educational adventure. Through professor-guided study tours, you experience concepts discussed in class, first-hand. And because all study abroad courses are partially subsidized by the University, the opportunities are within reach.

Past highlights include:

- > Visiting a Soka elementary school in Tokyo.
- > Studying food security at the World’s Fair in Milan.
- > A lecture on the history and management of the Cannes Film Festival by one of the logistical directors.

Course destinations have included:

- > Argentina > Australia > Austria > Denmark
- > England > France > Germany > Ireland
- > Italy > Japan > Portugal > Spain
- > Sweden > New Zealand > USA

Exchanges

If you participate in one of our international partnerships, or exchanges, you can spend a semester overseas at a foreign university such as the University of Ulster, Northern Ireland or Hanze University of Applied Sciences, Netherlands. You get to travel and study abroad, but can do so while paying University of Guelph-Humber tuition fees (not international student rates).

International faculty will also be coming to you. We are pleased to welcome visiting professors who can share their academic expertise and culture with you. We also encourage our professors to reciprocate the exchange experience in the partner country.



Undergraduate research

A research grant fund gives you the chance to work alongside faculty as a paid research assistant—a rare undergraduate achievement. Through these assistantships, you are able to put classroom knowledge into practice, while also developing skills in conducting experiments, research and data collection. You may also have the opportunity to contribute to research publications.

Research projects students have worked on include:

- › An innovative housing model providing integrated support services to adults with special needs supervised by professor Brenda Elias, Family and Community Social Services.
- › Community-engaged learning in large classes supervised by professor Kerry Ritchie, Kinesiology.
- › Assisting digital storytelling by teenagers to challenge the meanings of identity for young people supervised by professor Mark Lipton, Media Studies.

Program-based societies

Societies are run by students for students and are linked to our academic programs. You can join a society to help plan social and educational events, while developing leadership skills, gaining professional experience and networking.

Direct path to Law School: City University London partnership

The University of Guelph-Humber and The City Law School, City University London have partnered to offer our graduates a prime law school opportunity: an advantage that puts you ahead. Guelph-Humber alumni with a competitive average are eligible for admission to the Graduate Entry LLB (Hons) at The City Law School in London, England; there is no LSAT and our graduates receive reduced tuition. As a University of Guelph-Humber graduate, you can earn a senior status law degree in two years.

Study where the largest law firms in the world are located: London, England. The Graduate Entry LLB (Hons) attracts international students from all over the world—many from Canada. Follow in the footsteps of renowned alumni such as Mohandas Karamchand Gandhi, Margaret Thatcher and Tony Blair. Our student services staff will assist all qualifying Guelph-Humber students with their applications, recommendations and other required documents to ensure your entry to law school overseas is a smooth process.

In six years, a University of Guelph-Humber student can achieve an honours bachelor degree, a college diploma and an LLB.



Business

Do you want a successful career in business? Interested in understanding how markets work and the different ways goods are bought and sold? Do you have a passion for leadership?

Take charge. Learn how to market goods, fund a business, lead others, work ethically, think big and work within a team, but above all focus on your career objectives. Get introduced to a range of different business areas and discover where your interests lie. Our program combines an in-depth knowledge of the business world with the hands-on skills necessary to lead and succeed.

Focused academic program

Start with a foundation in the key areas of business. Courses in your first two years explore marketing, logistics, communications, ethics, organizational behaviour, economics and accounting. In years three and four, you will build a more personalized curriculum. You also have the opportunity to study abroad: see page 6 for details.

Choose to focus your studies in one of six areas of emphasis or select a variety of courses reflecting a range of interests.

Areas of emphasis

Accounting: Complete the courses you need to pursue your CPA when you graduate.

Finance: Learn about banking, insurance, capital projects, investing and portfolio management.

International Business: Explore global currencies, trade and industry practices of Asia Pacific, Europe and Latin America.

Management: Learn the challenges of running various types of enterprises including for-profit, not-for-profit, small and large businesses.

Marketing: Explore how product, price and promotion meet consumer needs and achieve company objectives.

Small Business Management and

Entrepreneurship: Study key strategies for starting and maintaining a successful new venture.

Industry connections

You will take part in up to **300 hours** (minimum 100 hours) of workplace experience tailored to your goals. Placements have included BMO Financial Group, RBC Dominion Securities, Sun Life Financial, Rogers Communications, Free the Children, Dr. Oetker, Ontario Lottery and Gaming Corporation, and Investors Group.

Opportunities

Hands-on practice

In our Business Management Simulation course, you will run a virtual business over one semester—making business decisions and managing the results. In the Planning a Small Business course, you will prepare a business plan for a small business to gain a practical understanding of the process for start-ups. You will work in a team in the Event Management courses to develop, implement and manage a special event in our Art Gallery.

Compete and network

Put your skills to the test and earn valuable experience. You can represent the University at business conferences and competitions against other postsecondary institutions, such as the Wharton Undergraduate Consulting Conference & Case Competition and the Royal Roads University International Undergraduate Case Competition.





Jaylen
McCurbin

Business graduate,
2015

*"Guelph-Humber
perfectly balances
theoretical and practical
experience. It has given
me both the technical
knowledge and soft-
skills needed to excel
in the business world."*



Northview Heights
Secondary School,
Toronto



International
Business
Association

DECA UofGH



Financial Analyst,
Imperial Oil

CPA Candidate

Earn 2 credentials

- > Honours Bachelor of Business Administration
- > Diploma in Business Administration

Admission subject requirements

- > ENG4U, any 4U math and 4 additional 4U/M courses
- > Estimated minimum range for admission: 75%-80%

Consider your future.

Accountant
Brand Manager
Entrepreneur
Financial Advisor
International
Accounts Manager

Marketing Manager
Consultant
Master of Business
Administration

Law School
Master of
Accountancy
Master of Science
in Management

Master of Science
in Marketing
Master of Finance
Chartered
Professional
Accountant (CPA)

Note: Some careers and entry into postgraduate education may require additional study.

Early Childhood Studies

Do you want to help children and make a difference in their lives? Are you passionate and caring? Are you enthusiastic, creative and fun? Do you want to learn more about why and how children do what they do?

Our program focuses on the physical, social, emotional and cognitive development of young children from birth to eight years and their interaction with the world around them. You will learn how to engage children, understand parent-child relations and assess a child's development. You get the know-how to support children individually, as well as work with their families, schools and the community.

Focused academic program

Your first two years look at children as individuals. In your first year, you are introduced to the domains of childhood development and theories and foundations of early childhood. In your second year, you will learn the basics of child anatomy and physiology; how to create curriculum; observation and research skills; and dynamics of relationships.

The third and fourth years of the program expand your focus to children and the community. You will learn how to work with children with special needs, program administration, assessment and intervention, and leadership.

You also have the opportunity to study abroad: see page 6 for the exciting details.

Industry connections

You will complete more than **700 hours** of workplace experience. Past placements include classrooms, hospital pediatric units, children's mental health centres, inclusive learning and therapeutic environments, early learning centres, and community-based/advocacy organizations.

Placement 1: Job shadowing will help introduce you to the range of job opportunities available.

Placement 2: Experience an early learning and care setting.

Placement 3: Participate in a placement related to inclusion and special needs.

Placement 4: Gain knowledge in community-based organizations.

Placements 5 & 6: Building on your previous experience, you will select a year-long setting tailored to your career aspirations and knowledge base.

Note: You will be required to complete a Vulnerable Sector Screening, documentation of immunization and a First Aid/CPR certificate prior to placement.

Opportunities

Assess and support

Develop a comprehensive set of abilities to assess children's development and be able to support and educate children in a meaningful way. Understand how to create interventions and work with children in a variety of settings.

Learn through play

Borrow from our extensive collection of educational and therapeutic materials and toys in the Early Childhood Studies Resource Room to enhance your placements.

Become an RECE

Be work-ready and complement your Honours Bachelor of Applied Science degree by registering as an Early Childhood Educator upon graduation.

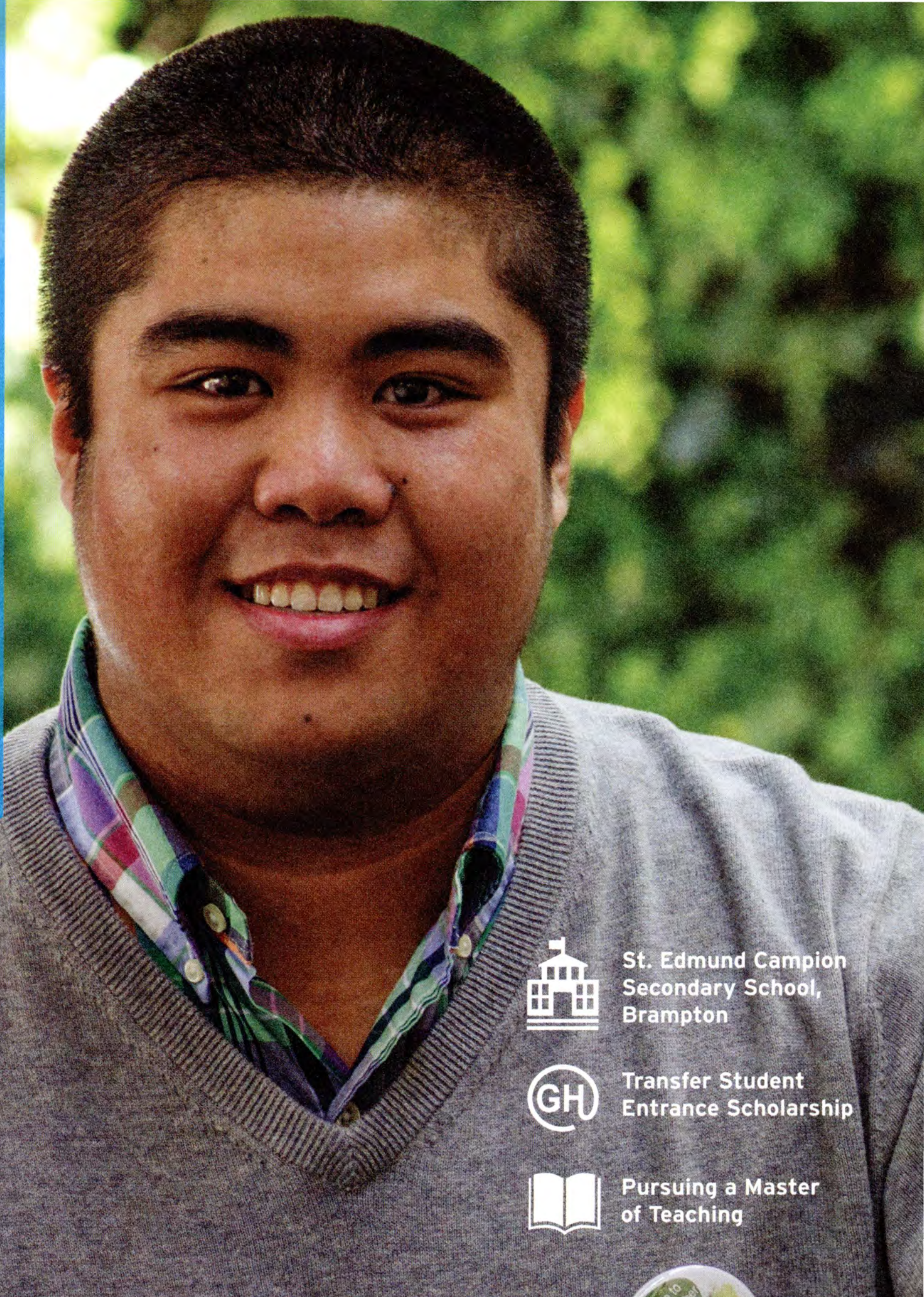




Arin Cunanan

Early Childhood graduate, 2015

"Professors guided my learning and supported me through all the decisions I had to make to develop into the educator I am today. I hope to model their behaviour with the children and families I work with to help them grow and develop."



St. Edmund Campion Secondary School, Brampton



Transfer Student Entrance Scholarship



Pursuing a Master of Teaching

Earn 2 credentials

- > Honours Bachelor of Applied Science in Early Childhood Studies
- > Diploma in Early Childhood Education

Admission subject requirements

- > ENG4U and 5 additional 4U/M courses
- > Estimated minimum range for admission: 75%-80%

Consider your future

Registered Early Childhood Educator
Special Needs Resource Consultant
Childcare Supervisor/Director/Owner
Intensive Behaviour Therapist

Play Therapist
Children's Rights Advocate
Research and Policy Analyst
Bachelor of Education (Teachers College)

Master of Education
Master of Science in Occupational Therapy
Master of Arts in Child Study and Education

Master of Science in Speech-Language Pathology
Master of Child Life Studies
Master of Disability Studies

Note: Some careers and entry into postgraduate education may require additional study.

Family and Community Social Services

Do you want to help others? Do you want to effect change? Are you interested in getting involved with a social issue you are passionate about?

Make a difference in society in a very meaningful way. Our program explores current social issues, and the development and delivery of programs designed to assist individuals, families and communities. You will be exposed to different areas of social service work and learn how to understand the challenges faced by vulnerable populations so you can learn how to deliver impactful services, including counselling, mediation and crisis intervention.

Focused academic program

Courses in your first year focus on understanding human behaviour and issues related to individuals, families and groups in the field of social work. Courses include Social Work in Canada, Couple and Family Dynamics, and Interpersonal Communication Skills.

In your second year, you will engage in theoretical and practical studies in counselling, ethical and professional issues, and working with various vulnerable populations.

In your upper years, you will work with diverse groups and learn theory and techniques in family therapy, case management and social work practice.

You will graduate with important skills and approaches you need for the workplace or further studies in social work—how to listen, how to support someone, understanding boundaries, professionalism, cultural awareness, compassion and self-care.

You also have the opportunity to study abroad: see page 6 for more details.

Industry connections

Starting in your second year, you will earn more than **850 hours** of supervised workplace experience at three different placements. Past placements include children's mental health centres, hospitals, seniors' residences, addiction centres, research clinics, detention centres and correctional institutions.

Placement 1: Initial exposure to a variety of social issues and the day-to-day operations within a community organization.

Placement 2: Continue to learn about agency functions and begin to interact with agency staff, volunteers, clients and the community for one academic year.

Placement 3: Provide direct client services through individual, family, group and/or community interventions in a year-long placement.

Note: You will be required to complete a Vulnerable Sector Screening prior to each placement.

Opportunities

Simulate a community agency

Take advantage of a lab simulating aspects of a typical community agency. The room is equipped with one-way observation mirrors, audiovisual equipment, interview furniture and offices. Use it for research and to practise administrative, interviewing and counselling skills.

Participate in professional development

The Social Services Symposium is an annual themed event that gives you the opportunity to present research and learn from various practitioners and researchers in your field.

Hands-on practice

Courses offer you the opportunity to practise interviewing, counselling, crisis intervention, mediation and conflict resolution. By videotaping the sessions and receiving feedback you can analyze your techniques to help you learn to communicate and help people more effectively.





Annelise Callisto

Family and Community Social Services graduate, 2015

"Providing therapy to children with autism in my placement helped me decide to pursue a career working with children and adults with disabilities."



Emily Carr Secondary School, Woodbridge



Research Assistant



Pursuing a Master of Social Work

Earn 2 credentials

- > Honours Bachelor of Applied Science in Family and Community Social Services
- > Social Service Worker Diploma

Admission subject requirements

- > ENG4U and 5 additional 4U/M courses
- > Estimated minimum range for admission: 75%-80%

Consider your future

Case Manager
Community Youth Worker
Hospice Support Worker
Applied Behaviour Analysis (ABA) Technician

Intensive Behavioural Intervention (IBI) Technician
Social Service Coordinator
Volunteer Coordinator

Mental Health and Addictions Worker
Master of Social Work
Bachelor of Education (Teachers College)
Master of Public Policy

Masters programs in Disability Studies
Law School
Postgraduate certificate in ABA/IBI
Bachelor of Social Work

Note: Some careers and entry into postgraduate education may require additional study.

Justice Studies

Are you interested in work related to our legal system: immigration, social justice, policing, security, parole or probation? Do you want to help people? Is law school in your future?

Accept the challenge and responsibility a career in justice studies holds. Our program gives you the opportunity to gain academic and practical experience in justice issues. Develop strategies for working in a public service role with high-risk individuals in public, private, community and institutional settings, or moving ahead with further educational opportunities.

Focused academic program

In your first year, you will build a foundation in justice and related fields through courses such as Crime and Criminal Justice, Introduction to Law, and Principles of Sociology. In year two, you begin to take courses that touch on various services and how they are delivered, such as counselling, conflict resolution, forensics and policing.

After four years of full-time study, you will earn an **Honours Bachelor of Applied Science in Justice Studies** as well as a college diploma. You will choose which diploma to pursue in your second year:

Community and Justice Services

Focuses on social issues and explores the development of community programs, ways to work with both victims and offenders, and methods of crime prevention.

Or

Police Foundations

Prepares you for a career in the various levels of law enforcement in the Canadian justice system.

Years three and four move on to advanced courses that immerse you in issues such as ethics, equality, rights and freedoms, youth and the law, and criminology.

Throughout your four years, you will be exposed to the justice system: from the rules we follow, to dealing with people and communities, to the hands-on processing of crime scenes and making arrests. Build key skills required in any area of justice such as critical thinking, research methods and how to write effectively. You also have the opportunity to study abroad: for more information see page 6.

Industry connections

Unique to our program, you will take part in at least **200 hours** of community service placements in two justice agencies/organizations.

Past placements include Toronto Police Service, Ontario Justice Education Network, Special Investigations Unit, Yonge Street Mission, The Salvation Army and Ministry of the Attorney General.

Note: You may be required to complete a Vulnerable Sector Screening and/or Criminal Reference Check prior to placement.

Opportunities

Investigate crime scenes

Evaluate staged crime scenes in our very own crime scene investigation (CSI) room. You can use mock court to role-play a case. Learn investigative techniques and how to handle evidence.

Observe social issues

In the Canadian Social Problems course, you will take part in a street walk with classmates and faculty in downtown Toronto to observe and discuss social issues, such as poverty and homelessness.

Meet people in the field

Take specialized field trips to places such as Maplehurst Correctional Complex, the Ontario Police College and local courthouses. Guest speakers and visiting professors lend their expertise to your education.

Join the society

Join the Criminal Justice Honour Society, Alpha Phi Sigma. The society promotes academic excellence, community service, educational leadership and unity.





**Chantel
Glenster**

Justice Studies
graduate, 2015

*"My Issues in Ethnicity
and Class professor
showed me how to
think objectively, and
formulate and voice my
own opinions. Overall, he
helped me identify and
overcome obstacles."*



**St. Marguerite
d'Youville Secondary
School, Brampton**



**Guelph-Humber
Student Association**

**Member,
Alpha Phi Sigma**



Pursuing a law degree

Earn 2 credentials

- > Honours Bachelor of Applied Science in Justice Studies
- > Diploma in Community and Justice Services or Police Foundations

Admission subject requirements

- > ENG4U and 5 additional 4U/M courses
- > Estimated minimum range for admission: 75%-80%

Consider your future

Victim Services
Worker
Crime Analyst
Corporate
Investigator
Police Officer
Probation Officer

Border Services
Officer
Court Worker
Law School
Master of Arts in
Criminology

Bachelor
of Education
(Teachers College)
Master of Public
Administration
Master of Social
Work

Master of Business
Administration
Master of Arts/
Science in Forensic
Psychology

Note: Some careers and entry into postgraduate education may require additional study.

Kinesiology

Do you want to teach people how to adopt healthier lifestyles? Are athletics and physical fitness important to you? Would you like to be a part of new performance and health research?

Turn your passion for health and fitness into a future in kinesiology and help address today's health concerns. Our program focuses on the science of the body and human movement. You will learn how the body works, how to make it work better, what causes health issues and how to prevent illness. You will develop a strong scientific background and practical skills that will enable you to apply your knowledge to essential roles in health promotion, fitness and lifestyle assessments, rehabilitation, training and research.

Focused academic program

In the first two years of the program you will learn the fundamentals of the human body through courses such as Biochemistry and Metabolism; Human Anatomy; and Cell Biology, while developing applied skills in courses such as Health Counselling and Behaviour Change; Exercise Prescription; and Fundamentals of Fitness Testing. In the third and fourth years, your courses will focus on performance and clinical applications of exercise and nutrition theory.

You will also engage in independent research. Embedded in our program is hands-on experience through practicum courses, labs and placements. Our study abroad course offers you the opportunity for additional first-hand experience: see page 6 for more details.

Industry connections

You will complete more than **240 placement hours** during your final two years. On campus, in your third year, you will work one-on-one with a client to help reach their fitness goals through a personal training placement. Off campus, you will work with organizations offering applied experience or research.

Placements have included Princess Margaret Cancer Centre, Ontario Lung Association, Aim2Walk Neurological Rehabilitation Centre, Toronto and Peel District school boards, YMCA, cardiac rehabilitation facilities, and several university athletic and varsity departments.

Opportunities

Learn through labs

Labs extend your classroom content with applied techniques and hands-on lessons. They are integrated into every year of study and enhance your learning experience of anatomy, exercise prescription, biomechanics, fitness assessment and more.

Choose career-relevant practicums

You will take at least four practicum courses, focusing on complementary and advanced exercise training and testing, to gain hands-on experience in an area of interest. Courses include Functional Ability Evaluation; Athletic Bandaging and Taping Techniques; Group Strength and Athletic Training; Musculoskeletal Disorders; and Forensic Kinesiology.

Complete research

Our program offers unique, valuable research experience through placement hours for research-based work, literature review or thesis courses and research assistant positions with University faculty.

Get certified

With your degree, you will be eligible to pursue the following designations with several professional organizations: Registered Kinesiologist; Certified Personal Trainer; Certified Exercise Physiologist; Certified Strength and Conditioning Specialist; Fitness Instructor Specialist; and Functional Capacity Evaluator.





Jordan Bates

Kinesiology,
4th year

"I really enjoyed the exercise assessment protocols. I have gone through Wingate, VO2 Max and strength tests, all of which helped my understanding of course material—and were a lot of fun."



**Southwood
Secondary School,
Cambridge**



**Founding Co-Chair of
the Canadian Obesity
Network, Guelph-
Humber Chapter**

**Residence, Front
Desk Assistant**

Intramural ice hockey



**Pursuing a career
as a Registered
Kinesiologist**

Earn 2 credentials

- > Honours Bachelor of Applied Science in Kinesiology
- > Diploma in Fitness and Health Promotion

Admission subject requirements

- > ENG4U, any 4U math, any 2 courses from SBI4U, SCH4U, SPH4U or PSE4U and 2 additional 4U/M courses
- > Estimated minimum range for admission: 75%-80%

Consider your future

Registered
Kinesiologist

Exercise
Physiologist

Wellness

Coordinator

Research Assistant

Occupational
Health and Safety
Specialist

Master of Physical
Therapy

Master of
Occupational
Therapy

Bachelor
of Education
(Teachers College)

Master of Science

Master of Public
Health

Master of Health
Promotion

Chiropractic College
Naturopathic
College

Medical School

Certified Strength
and Conditioning
Specialist

Note: Some careers and entry into postgraduate education may require additional study.

Media Studies

Interested in storytelling? Do you have an appetite for information? Does your creativity know no bounds? Do you have a flair for technology?

Explore journalism (telling stories), digital communications (telling stories digitally), public relations (telling stories on behalf of others), image arts (telling stories visually) and media business (managing the business of storytelling). Our award-winning students learn how to communicate and develop the skills to use different media platforms to meet tomorrow's needs. We keep pace with an industry that sees our graduates as media professionals with the versatility to work in diverse and changing environments.

Focused academic program

During your first two years, you will be introduced to various media fields and study the historical, social, cultural and ethical aspects of the industry through courses that challenge you to think, read and write critically. Learn how media has developed then look ahead to emerging trends. Following your second year, you will choose one of five specializations.

Specializations

Digital Communications: Create multi-platform content; work with web design, audio and videography.

Image Arts: Learn photographic techniques, video and photo editing and manipulation, and study commercial and art photography.

Journalism: Explore print, broadcast and online journalism with a strong focus on writing, editing and pitching stories.

Media Business: Learn the business of managing media sales, marketing and advertising.

Public Relations: Learn corporate communications, media relations and event management using various tools, including traditional and social media.

You are not limited by your specialization. You can take courses from other areas as well. Third- and fourth-year courses teach you about governance and policy and how to work in a team environment, such as producing a newspaper or television broadcast or promoting and managing a large event.

As part of the Applied Research Project course, you will explore, in depth, a subject of your choice.

Past student projects have included "The United States of Trash: Belonging in Bad Film" and "The Portrayal of Body Image in the Media and its Effects on Men and Women". You also have the opportunity to study overseas: see page 6 for the exciting details.

Industry connections

After third year, you will complete an internship of more than **200 hours**. Placements have included Shaw Media, Universal Music Canada, 680News, TSN, *Lithium Magazine*, Corus Entertainment and Bell Media. A new international internship in Bremen, Germany, is also an exciting course option.

Opportunities

Access technology

Our new multi-purpose production facility has high-definition sound; a green screen; editing suites; facilities for photography, videography, streaming broadcasts; and mobile technology. Also available to you is our integrated newsroom for print, television or radio.

Broadcast your skills

In the two courses, Specialized Reporting and News Editing and Writing, you will produce *Radix*: an online news site. You can also apply your media skills to the Guelph-Humber Media Society, fondly known as GuHu, which can involve you in running the GuHu radio or TV station, or website.

Work as a team

In fourth year, you will work with your classmates to organize EMERGE, a groundbreaking annual media project that showcases all disciplines and includes the first Canadian student media awards.





Natalie Quinlan

Media Studies
graduate, 2013



St John's College,
Brantford



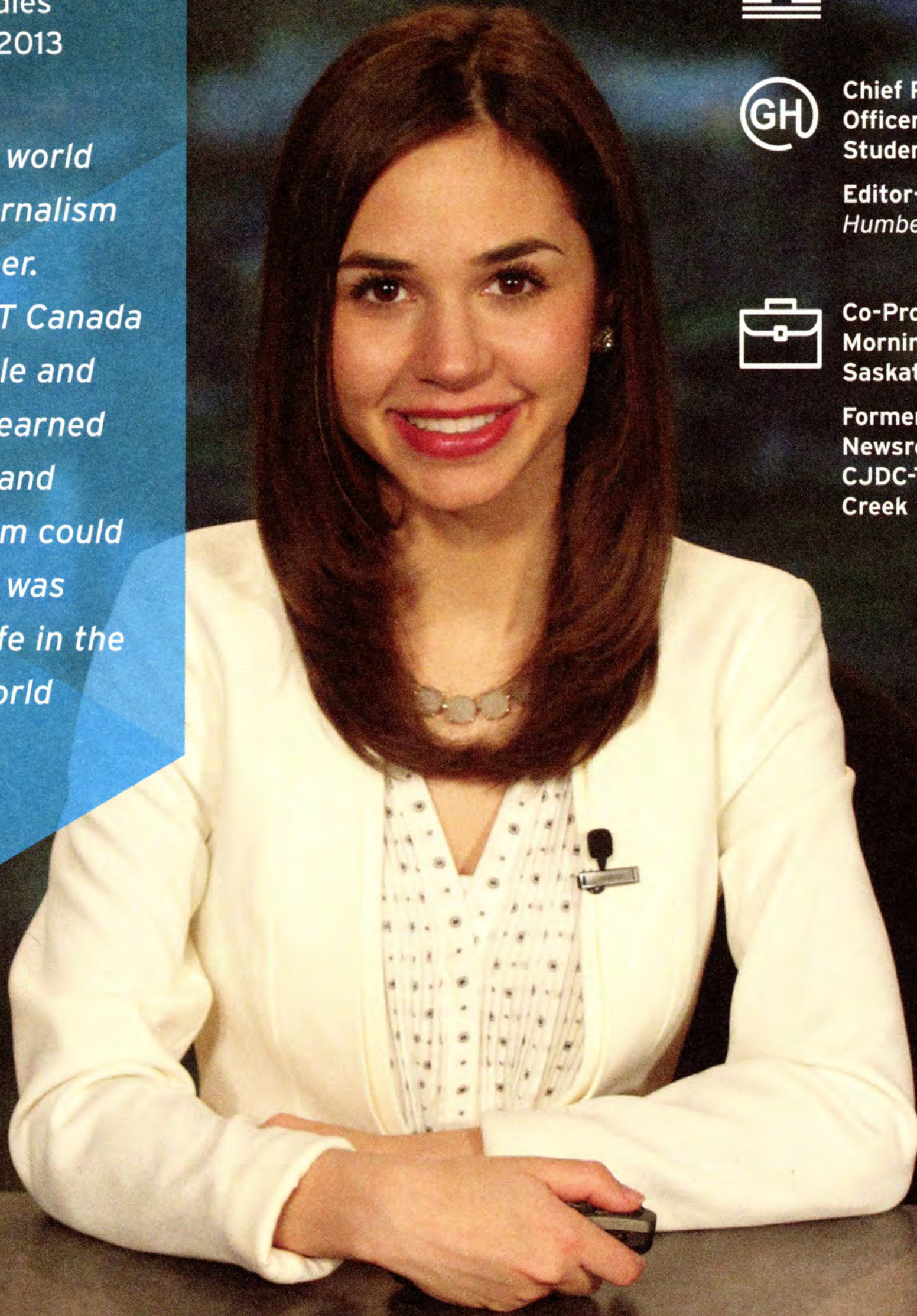
Chief Returning
Officer, Humber
Students' Federation

Editor-in-Chief,
Humberlife



Co-Producer, CTV
Morning Live,
Saskatoon

Former Anchor and
Newsroom Supervisor,
CJDC-TV, Dawson
Creek



"I discovered the world of broadcast journalism at Guelph-Humber. Interning with ET Canada was unforgettable and life-changing. I learned what hard work and loyalty to a dream could accomplish, and was prepared for a life in the ever-evolving world of television."

Earn 2 credentials

- > Honours Bachelor of Applied Arts in Media Studies
- > Diploma in Media Communications

Admission subject requirements

- > ENG4U and 5 additional 4U/M courses
- > Estimated minimum range for admission: 75%-80%

Consider your future

Digital Content Creator
Social Media Specialist
Publicist
Videographer

Media Buyer
Graphic Designer
Journalist (print, radio, TV, online)
Photographer
Art Director

Advertising Specialist
Master of Arts in Communications
Law School
Master of Journalism

Bachelor of Education (Teachers College)
Graduate program in Communication and Culture

Note: Some careers and entry into postgraduate education may require additional study.

Psychology

Interested in learning how people think? Want to understand human emotion and why people behave the way they do? Are you curious about the human brain?

Find your niche. Through our program you will examine theories and research exploring human thought, feeling and behaviour. Study the brain. Learn research skills. Discover how psychology plays a role in every area of society—business, health, sports, entertainment, law, communication and more. Get the mix of theoretical knowledge and experience that will prepare you for continued study or to be competitive in the workplace immediately following graduation.

Focused academic program

A solid foundation in psychology will drive your success. Your first two years introduce you to key concepts and provide foundational courses, including Developmental Psychology; Social Psychology; Research Methods; and Personality. You will also build your skills in critical thinking and effective writing.

In addition to your honours degree and diploma, you have the option to pursue **one of three certificates** in years three and four:

Intercultural Relations

Increase your knowledge and skills in the area of intercultural relations and communications.

Organizational Behaviour

Focus on knowledge and skills related to working with groups, and explore the relationship between psychology and industry, organizations and corporations.

Research Skills and Analysis

Expand your knowledge of research methods in psychology and refine your investigative and analytical abilities.

In years three and four, your courses will become more focused and offer more applied study. You will apply learned concepts through courses such as Drugs and Behaviour, Theories of Psychotherapy, and Abnormal Psychology. In your final year, you will choose between an honours seminar and thesis.

You also have the opportunity to study abroad: see page 6 for details.

Industry connections

In the third-year course Applied Study in Psychology, you will integrate psychological theory and research with at least **100 hours** of workplace experience. Placements have included Peel Halton Dufferin Acquired Brain Injury Services, Aphasia Institute, Credit Valley Hospital, The Etobicoke Children's Centre, Ontario Correctional Institute and Community Living Mississauga.

Note: You may be required to complete a Vulnerable Sector Screening prior to placement.

Opportunities

Learn outside the classroom

As part of the optional field course, learn from Elders, community members and local mental health care service providers working among indigenous communities in northern Ontario. Examine challenges and treatments, and explore the future of mental health in these communities and across Canada.

Combine education and social events

Take part in Common Time: weekly workshops, notable guest lecturers and special events that bring together fellow classmates and faculty in an academic and social atmosphere. Many activities are run by the Psych Society.

Gain research experience

Consider applying for a paid research assistant position for additional hands-on experience. Students have assisted our faculty in studies such as examining coping strategies in marathon runners, exploring new treatment approaches addressing anxiety in children, and cross-cultural psychology research.





Kylie Waghorn
Psychology graduate,
2015

"Professors have experience in a range of settings, which really enhances your learning. Instead of just learning the theoretical, you gain an in-depth understanding of how psychology is applied in a variety of contexts."



Sir Wilfrid Laurier
Secondary School,
Ottawa



President,
Psych Society
Research Assistant
Gold Medallion
for Leadership
Excellence



Pursuing a
career as a clinical
psychologist

Earn up to 3 credentials

- > Honours Bachelor of Applied Science in Psychology
- > Diploma in General Arts and Science
- > Optional certificate in: Intercultural Relations, Organizational Behaviour or Research Skills and Analysis

Admission subject requirements

- > ENG4U and 5 additional 4U/M courses
- > Estimated minimum range for admission: 75%-80%

Consider your future

Mental Health
Worker

Case Manager

Group Facilitator

Behavioural
Assistant

Human Resources
Specialist

Research Assistant

Program
Coordinator

Masters/PhD in
Psychology

Medical School

Master of Social
Work

Master of Education

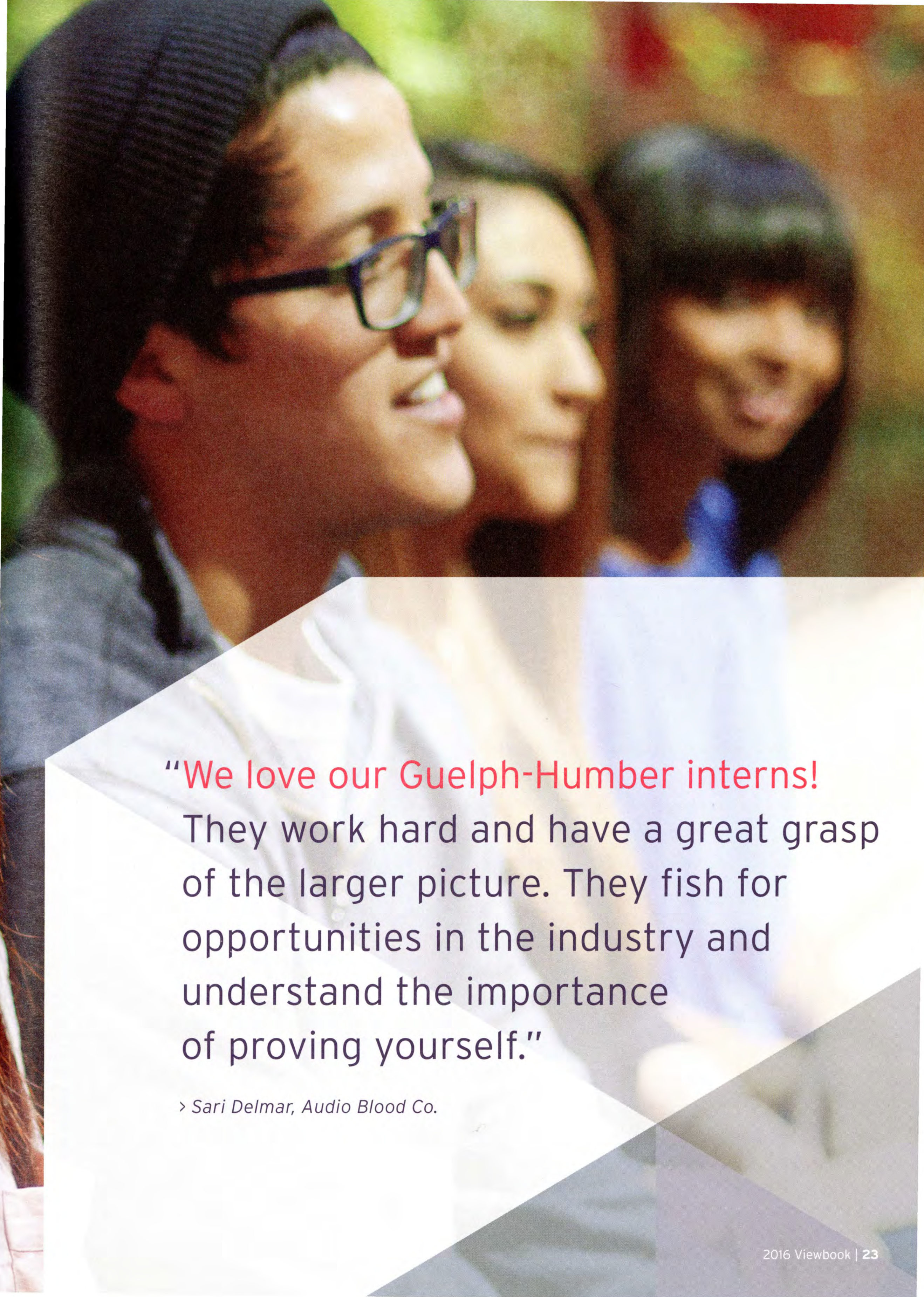
Bachelor
of Education
(Teachers College)

Law School

Note: Some careers and entry into postgraduate education may require additional study.

Student Services





"We love our Guelph-Humber interns!
They work hard and have a great grasp
of the larger picture. They fish for
opportunities in the industry and
understand the importance
of proving yourself."

› *Sari Delmar, Audio Blood Co.*

Student Services

Life as a University of Guelph-Humber student means being involved and part of a close-knit community.

Hello. My name is...

We'll know you in the Student Services office. We pride ourselves on a high level of student support. We are here for your success!

Our small student population means you have easy access to assistance for all your first-year needs:

- > transitioning to university life
- > meeting other first-year students
- > financial advice
- > course selection
- > placement services
- > career planning
- > student employment

Here, it's about people

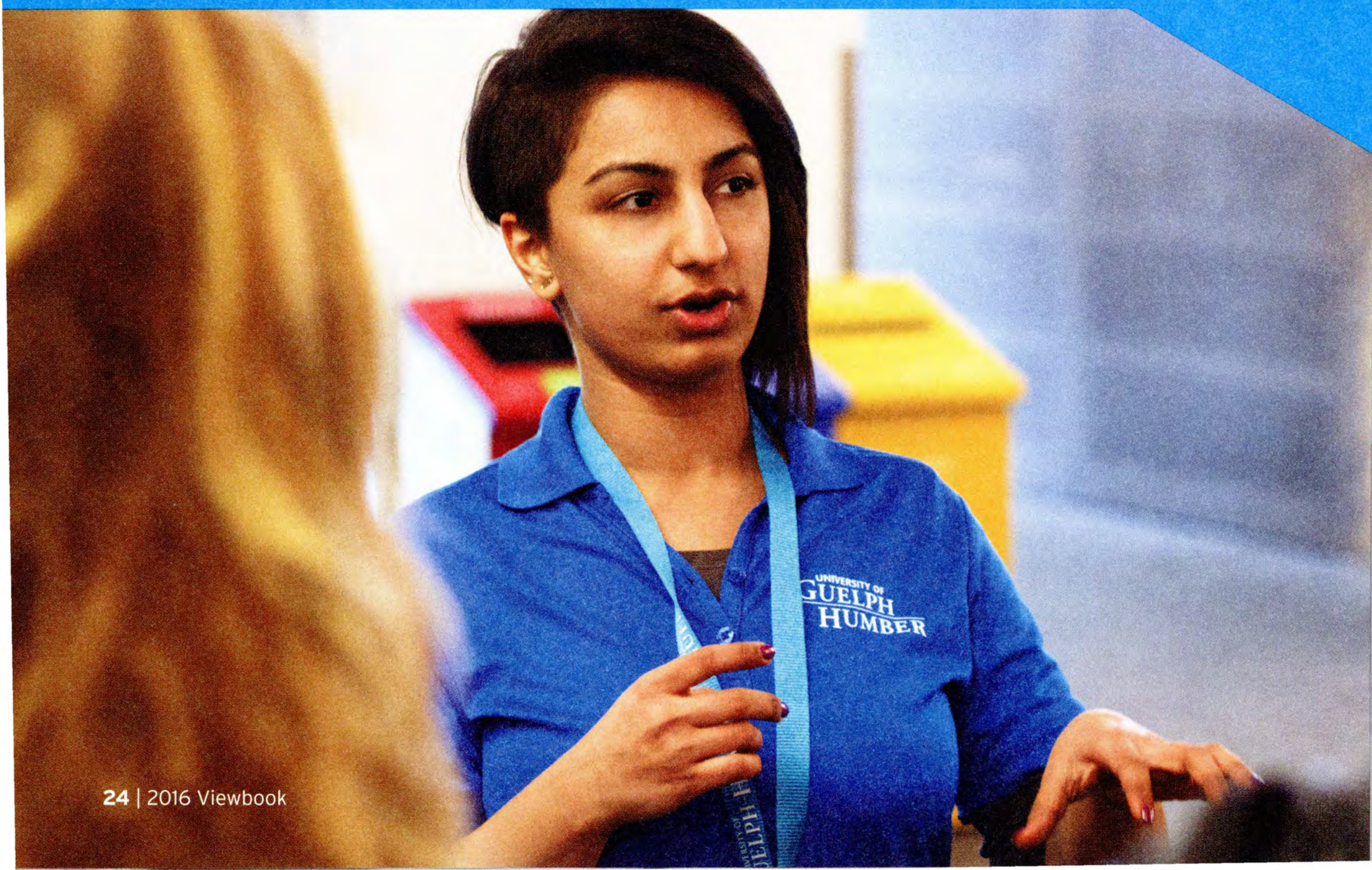
Every program has a dedicated Academic Advisor, Career & Placement Coordinator and

Academic Liaison Librarian in place to support all your program-specific needs. You can also rely on Support Peers: current students who work alongside staff, trained to help you with "how to" questions and to navigate campus life.

"At Guelph-Humber, I had an amazing experience. The staff was personable and easy to talk to about any issues. They also care about the students and want to help you succeed."

> *Allyson Schroeter, Early Childhood graduate*

Every new student can rely on support from the Student Transition and Resource Team (START) Leaders: senior students who are knowledgeable about the resources available to you. They offer you a student perspective on what campus life is really like, because they've been in your shoes!



Careers start here

You can launch your career starting in year one with career staff to guide you and provide one-on-one assistance. We are here to help you network, support you with your placement, develop your professional skills and build confidence as you begin your job search—whether it is for part-time work as a student or your future career.

Work on campus

Working on campus is not only convenient, it's also a great way to meet people, gain professional experience and contribute to the future of the University. There are many jobs on campus that we can help you find. Ask about our work-study program that employs students for jobs such as Social Media Assistant, Student Photographer, Tour Guide or roles in departmental offices.

Support for all

Student Wellness and Accessibility Centre

You can find the Health Centre, Accessible Learning Services and Counselling Services in one location for seamless, holistic support.

Public Safety

Your safety is paramount. Campus Security patrols the campus 24 hours a day, 7 days a week. The Campus Walk Program provides a walking partner for anyone who wishes to be accompanied to their vehicle, residence or elsewhere on campus.

Other support services and facilities include:

- > Aboriginal Resource Centre
- > Accounting Centre
- > Bookstore
- > Child Care
- > Interfaith Services
- > International Centre
- > Learning Commons
(individual and group study areas)
- > Library
- > Math Centre
- > Media Equipment Centre
- > Peer Tutoring
- > Student Financial Services
- > Writing Centre

More information about services can be found at guelphhumber.ca/futurestudents.

“A key aspect is being able to speak to professors who are professionals in your industry. This gives you a unique perspective on academic coursework, a realistic outlook on potential careers and an abundance of networking opportunities.”

> *Anthony Narine, Justice Studies graduate*



CHELSEA HOTEL



“Interning in Public Relations at the Chelsea Hotel gave me the hands-on experience needed to fully understand what I had learned in class and explore my career goals. My experience built my organizational and interpersonal skills, and I am now more confident in my abilities.”

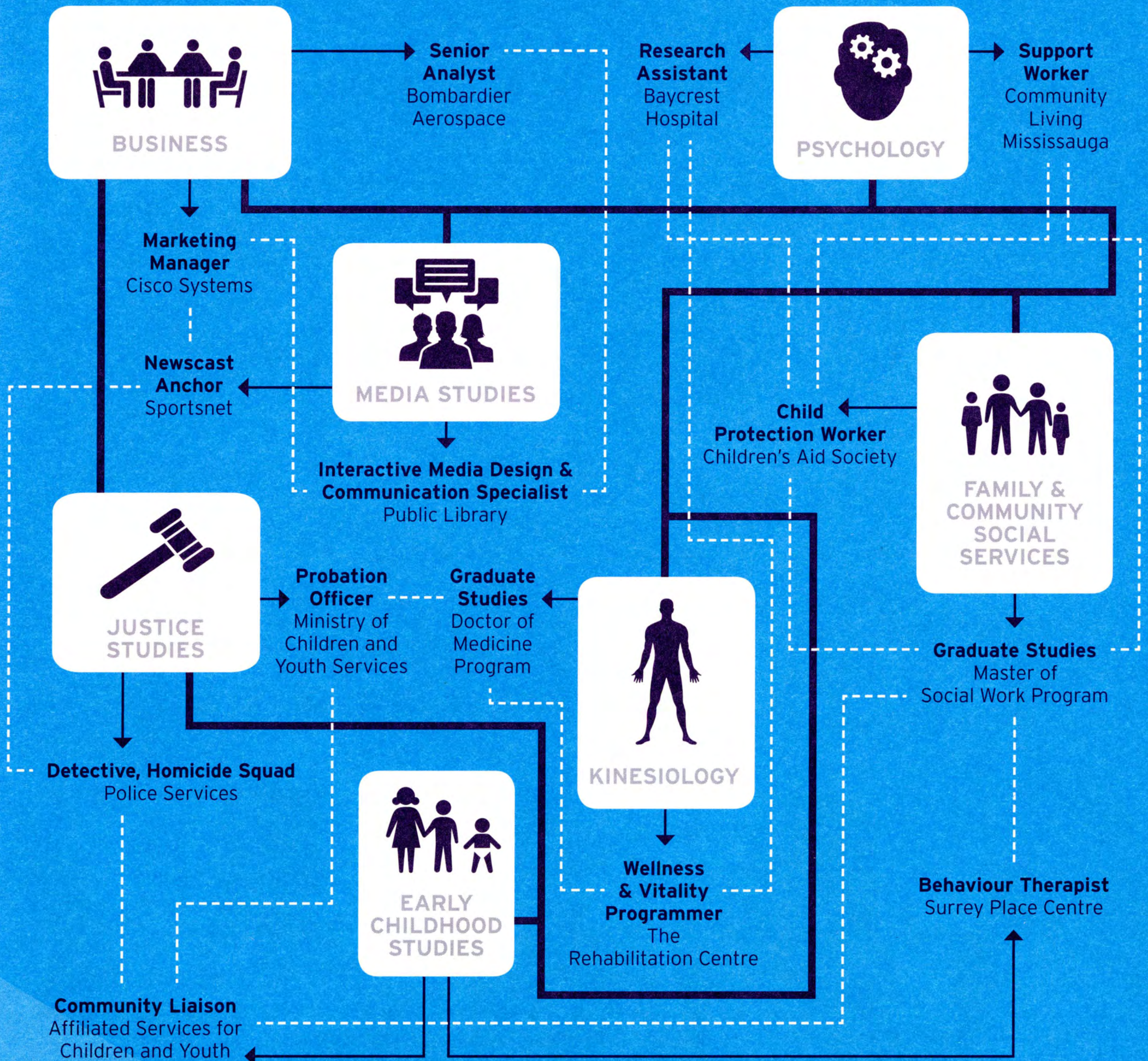
> *Kailey MacDougall, Media Studies graduate*

Connections

Make our small class sizes, work experience opportunities and close-knit community work for you, after graduation.

You may not realize it, but your four years at the University of Guelph-Humber will be four years spent establishing a professional network. When you graduate you will know most, if not all, of your graduating class. Alumni Services will help facilitate connections, keep you informed and stay

connected with the University, your peers and employers after graduation. Your fellow graduates, former professors and University support staff act as a web of industry professionals for references, advice and employment connections.



Getting Involved

Make friends, build your skills and have fun by participating in activities on campus. Connect with the Student Life department to get involved!

Events and programs

We want you to make the most of your university experience by participating in events designed for you as a first-year student to meet people and get acquainted with the University:

First Year Experience (FYE) Program - Meet other first-year students in your program. Connect online throughout the summer and meet at Orientation for an exclusive First Year Experience event. Mentoring and support from your FYE leader will continue through your first year.

Kick Start - Use this summer event to help prepare yourself and your family for your transition from high school to university life.

Orientation - Connect with other incoming students at this fun, students-only, official welcome to life at the University. We'll get you set for classes and show you how to get involved.

"For me, the connections and everlasting friendships forged at the University are undeniably as valuable as the education itself."

> *Marco Febbraro, Justice Studies graduate*

Clubs and societies

Explore your interests, make friends, network and have fun with a club or society.

Like the City of Toronto, our student body is a cultural community; many of our clubs reflect this. Clubs target the things you like to do for fun. If you can't find what you're looking for you can start your own! Societies are related to our seven academic programs and offer a new realm of activities outside of class with a focus on your field of interest.

"Being a part of the Guelph-Humber community was one of the best parts of university. I was able to grow, develop skills and meet some amazing people that I continue to stay in contact with after graduation."

> *Meghan DeClerq, Media Studies graduate*

Student government

Interested in the political life and advocating for your fellow students? Consider becoming active in student government.



Sports and Recreation

Balance your academic life with a healthy and active lifestyle. Whether you prefer individual workouts, recreational play, competitive sports or watching from the sidelines, there's something for everyone's definition of active.

Athletic Centre

As a University of Guelph-Humber student, you have access to the Athletic Centre on campus, including gymnasiums, weight room, cardio centre, aerobic studios and multi-purpose sports fields.

Just for fun

Make friends and have fun with a range of recreational sports on campus, including intramural or extramural leagues. Check out what the Fitness Centre has to offer, such as Extreme Bootcamp, Gentle Yoga or Zumba. And for those thinking outside of the norm, Athletics organizes off-campus activities that have included treetop trekking and indoor rock climbing.

Varsity athletics

Compete against other universities and colleges in the province and throughout the country. You can try out for either the University of Guelph Gryphons or Humber Hawks. For more information, visit University of Guelph Athletics at gryphons.ca or Humber Athletics at athletics.humber.ca.

University of Guelph Gryphons

- M Baseball
- M W Basketball
- M W Cross-Country
- W Field Hockey
- W Figure Skating
- M Football
- M W Golf
- M W Hockey
- M W Lacrosse
- M W Nordic Skiing
- M W Rowing
- M W Rugby
- M W Soccer
- M W Swimming
- M W Track & Field
- M W Volleyball
- M W Wrestling

Humber Hawks

- M W Badminton
- M Baseball
- M W Basketball
- M W Cross-Country
- M W Curling
- M W Golf
- M W Indoor Soccer
- M W Rugby
- M W Soccer
- W Softball
- M W Volleyball

"Athletics is a second family. It's very social and makes you part of something great. If you're not an athlete you can be a fan! I have met so many people watching games and cheering on the Humber Hawks."

> *Maria Christina De Rose, Kinesiology graduate*



Housing

Living away from home will build your independence and you'll meet many new people whether you live on or off campus.

Residence

Live with and learn from people with diverse backgrounds and experiences, and build your independence by living in residence. Our residence facilities are located just a two-minute walk from the University of Guelph-Humber building. As a first-year student your room will be single style. You can choose from themed floors, such as co-ed, health and wellness or quiet study—whichever is right for you!

Community kitchens that can be used for group cooking, an exercise room, recreational space, a dining hall and laundry facilities are all available to you. Dining plans are required if you live in residence and you can use your plan at food service outlets across campus. You will select from three dining plan sizes to accommodate your appetite.

You should account for approximately \$8,302 to \$10,731 per academic year for your dining plan and accommodations.

Details about the online application will be included with an offer of admission. You are encouraged to apply as soon as you receive an offer of admission, as space is limited. The deadline to apply for residence for September 2016 is June 1, 2016.

Off campus

Are you planning to live near campus? You can find resources through the Off-Campus Connection program to help you find off-campus living accommodations, community events and tips for living away from home for the first time. Visit humber.ca/offcampusconnection.

"Living in residence helped me meet people and there were a ton of other opportunities to get involved in. It really did become my home away from home!"

> *Erin Cochrane,
Media Studies graduate*



Commuting to Campus

Our campus location makes commuting a great option.

By transit

The campus is easily accessible by the Toronto, York Region, Mississauga, Brampton and GO transit systems. We have included a few transit commute examples for locations in the Greater Toronto Area.

City	Transit system	From	How to get to campus
Toronto	TTC	Finch Station (Yonge-University Line)	36A Finch West bus
Toronto	TTC	Kipling Station (Bloor-Danforth Line)	191 Express bus
Toronto	TTC	Wilson Station (Yonge-University Line)	96E Wilson bus
Mississauga	MiWay	City Centre Bus Terminal/Square One	107 Express bus north (Sept to May)
Mississauga	MiWay	Clarkson GO Station	110 bus north to City Centre Bus Terminal, transfer to 107 Express bus north (Sept to May)
Mississauga	MiWay	Meadowvale Town Centre	42 bus east, transfer to 22 bus east
Brampton	Brampton Transit/Züm	Bramalea City Centre	501 bus east, transfer to 50 bus south
Brampton	Brampton Transit/Züm	Downtown Transit Terminal	501 bus east, transfer to 50 bus south
Brampton	Züm	Shoppers World	511/511A bus east
Vaughan	YRT/Viva	Promenade Terminal	77 bus west, transfer to 7 bus south
Vaughan	YRT/Viva	Vaughan Mills Mall	85 or 85C bus west, transfer to 7 bus south
Multiple	GO	Various	Bus 35 with stops in Brampton, Malton, Toronto and Yorkdale Mall and connections to other GO bus routes

Please note: Transit routes are subject to change and you are encouraged to independently research getting to the University of Guelph-Humber. Many routes have a variety of transit options. For more detailed information please contact the specific transit system.

By car

If you drive to campus, you can purchase a parking permit for the fall/winter (\$465-\$578*) or summer (\$293.25*) semesters.

Take Highway 427 to the Finch Avenue exit. Travel east on Finch Avenue West and turn right onto Humber College Blvd. Proceed to Entrance A.

*Estimates based on 2015-2016 rates.

Location



Scholarships and Tuition





“University of Guelph-Humber students have a solid knowledge base, professional conduct and are high achievers.”

> *Anne Crisci, City of Toronto - Court Services*

Scholarships and Bursaries

Scholarships, bursaries and awards are a great way to support your educational expenses.

Renewable Entrance Scholarship

When you apply as a Canadian high school student you will automatically be considered for a Renewable Entrance Scholarship, based on your admission average.

Entrance (first year) award levels	
Scholarship	Final Admission Average
\$5,000	90% or above
\$4,000	85-89.9%
\$3,000	80-84.9%
\$2,000	75-79.9%

Renewal - We continue to reward your academic achievement!

Your scholarship is renewable for three years.

Scholarship Renewal Amount	Average
\$3,000	90% or above
\$2,000	85-89.9%
\$1,000	80-84.9%

If you are awarded a Renewable Entrance Scholarship, you will automatically be considered for each renewal year. To renew your scholarship, you must maintain a 100% course load in the fall and winter semesters with a minimum 80% average. We will base your renewal amount on your cumulative average of the fall and winter semesters before the year of renewal.

► **You can be a recipient of both the Founders' Academic Merit Scholarship and the Renewable Entrance Scholarship, for a possible total of \$34,000 over four years of full-time study!**

Transfer Student Entrance Scholarship

When you apply as a college student with a completed diploma or a university student with one year of university courses, you will be automatically considered for the Transfer Student Entrance Scholarship based on your final cumulative average. Please refer to the chart (below) for award levels.

International Student Entrance Scholarship

International students are automatically considered for the International Student Entrance Scholarship. Please refer to the chart (below) for award levels.

Award levels for Transfer and International Student Entrance Scholarships	
Scholarship	Final/Cumulative Average
\$5,000	90% or above
\$4,000	85-89.9%
\$3,000	80-84.9%
\$2,000	75-79.9%

All applicants will receive an estimate of their entrance scholarship amount included in their offer of admission. An increase in your final/cumulative admission average may increase your scholarship amount.

Founders' Academic Merit Scholarship

\$20,000

We are proud to recognize ten outstanding students each year who have demonstrated high academic achievement and superior leadership ability and potential. Each recipient receives \$5,000 per academic year over four years of full-time study, for a total of \$20,000.

To be considered for this scholarship you must be entering postsecondary studies for the first time at the University and have a minimum 90% admission average. To retain the scholarship in your second, third and fourth years you must be a full-time student and maintain a cumulative average of 80%. Apply online by February 28, 2016 at guelphhumber.ca/futurestudents.

Registrar's Need-Based Entrance Bursary

\$2,000

Based on a combination of academics and financial need. Apply online by April 15, 2016.

Available to high school applicants only.

Specialist High Skills Major Entrance Award

\$500

The University will award a \$500 scholarship to qualifying applicants who have completed one of the Specialist High Skills Majors (SHSMs) listed below and have a minimum final admission average of 80%. No additional application is needed, but to be considered for the SHSM Entrance Award check off the applicable box on your OUAC application. Available to high school applicants only.

Students may be eligible to receive this scholarship for completing one of the following SHSM Red Seals:

- > Arts and Culture
- > Business
- > Health and Wellness
- > Information and Communications Technology
- > Justice, Community Safety and Emergency Services
- > Non-profit
- > Sports

In-course awards

To recognize achievements and financial need, we offer a variety of awards to students in each year of study. Check online at guelphhumber.ca/sfs to see our full range of academic merit scholarships, need-based bursaries, and community involvement, volunteerism and leadership scholarships.

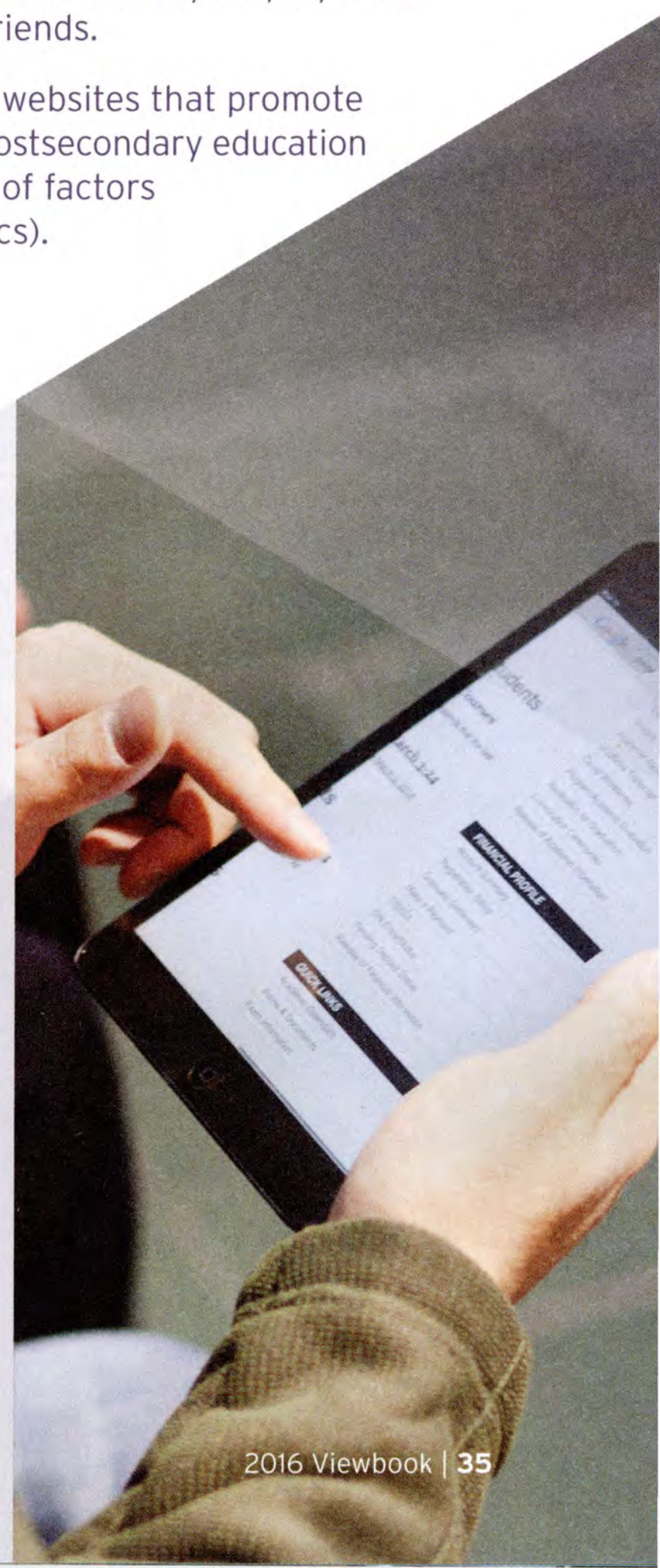
University of Guelph scholarships

The University of Guelph's most prestigious entrance scholarships are also available to University of Guelph-Humber students. These scholarships range from \$8,000 to \$34,000 and require an online application submitted by January 25, 2016.

Visit uoguelph.ca/registrar/studentfinance to learn more.

How to find additional scholarships and funding

- Research government grants, such as OSAP.
- Look into programs offered by employers of your family and friends.
- Search online for websites that promote scholarships for postsecondary education based on a range of factors (not just academics).



Tuition

University is an investment in your future. Knowing the costs can help you plan ahead and meet your goals.

Tuition and fees

Estimated for domestic students only.

Item	Fall & Winter Semesters
Tuition (based on program)	\$6,200-\$8,300
Student Fees*	\$993

*Mandatory student fees include athletics, technology, health care and dental.

Other expenses

Everyone's needs vary. Below is a list of estimated costs for education-related expenses. Select those that apply to you to help estimate your financial needs.

Item	Fall & Winter Semesters
Books	\$1,000
Parking Permits	\$465-\$578
Transit Passes	\$896-\$1,400

Residence

Item	Fall & Winter Semesters
Accommodation	\$5,952-\$7,331
Food (on-campus meal plan)	Option 1 - \$2,350 Option 2 - \$2,850 Option 3 - \$3,400

International student fees

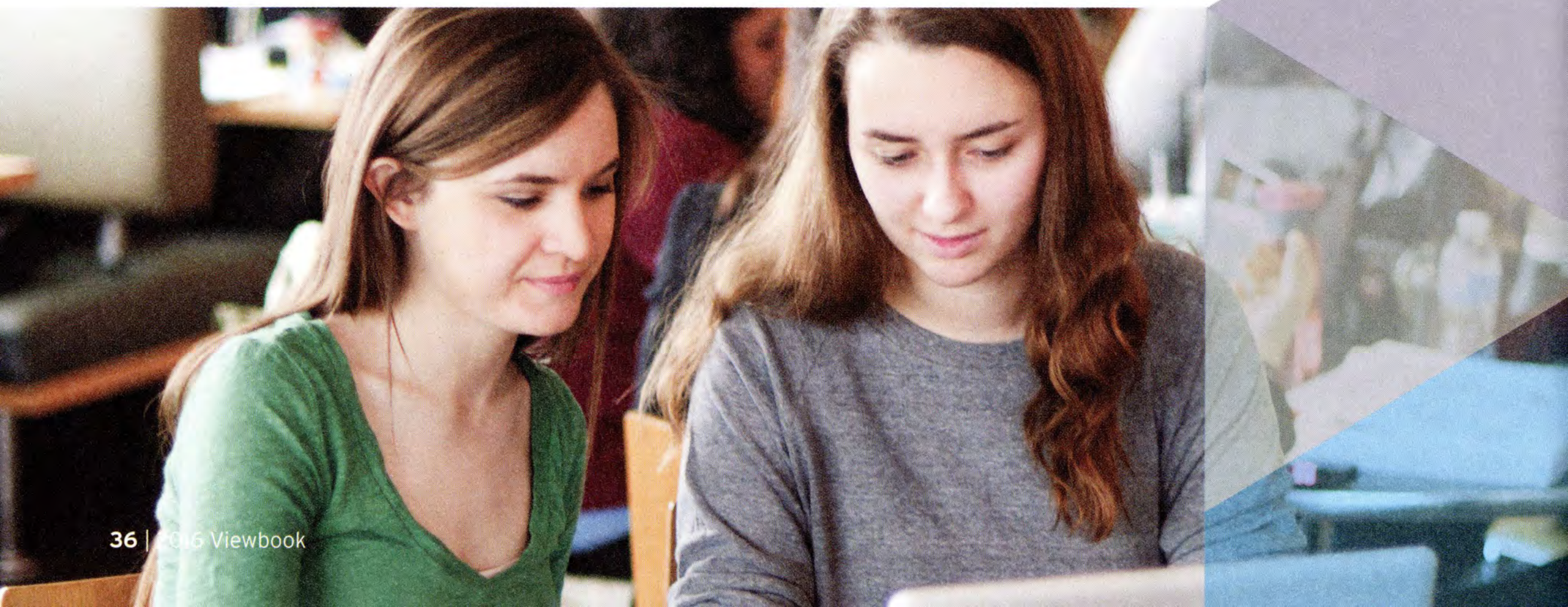
Item	Fall & Winter Semesters
Tuition (based on program)	\$19,309-\$21,221
Student Fees	\$993
Health Insurance	\$575

For a complete list of fees visit guelphhumber.ca/futurestudents.

Please note: All values listed are estimates only based on 2015-16 rates and therefore subject to change.

Payment timeline

The University of Guelph-Humber operates on a semester billing system to help you spread out the cost of tuition. Tuition and fees are collected prior to the start of each semester, for that semester. There is a \$200 deposit required in early August for fall tuition. Students moving into residence will also have a payment due in July.



University of Guelph

One of the top comprehensive universities in Canada.

We are dedicated to protecting and cultivating the essentials for quality of life—water, food, environment, health, community, commerce and culture.

As a University of Guelph student, you are put at the centre of everything we do. You are the learner—the visionary of our future. Establish yourself at a university with an internationally recognized reputation, a challenging variety of academic programs, state-of-the-art facilities, award-winning faculty and a population of 22,446 students. Find yourself in an environment and community in which you can thrive on every level.

Degree programs

- › Bachelor of Applied Science
- › Bachelor of Arts
- › Bachelor of Arts and Sciences
- › Bachelor of Bio-Resource Management
- › Bachelor of Commerce
- › Bachelor of Computing
- › Bachelor of Engineering
- › Bachelor of Landscape Architecture
- › Bachelor of Science
- › Bachelor of Science in Agriculture
- › Bachelor of Science in Environmental Sciences
- › Doctor of Veterinary Medicine

Beyond the classroom

- › More than 30 co-op programs.
- › 67 international exchange programs in 35 countries.
- › Extensive varsity and intramural athletic programs that involve over 16,500 students campus-wide.
- › More than 150 non-academic student clubs.
- › First-year residence guarantees* with a variety of accommodation choices.
- › Express GO Transit service from Brampton and Mississauga makes commuting to campus a convenient option.
- › Food services ranked #1 in Canada for 10 years in a row!

Location

The University of Guelph is located less than one hour west of Toronto. The city of Guelph, with its historic limestone architecture, thriving downtown core and its abundance of entertainment opportunities, is consistently rated as one of Canada's most livable cities. Guelph is home to internationally recognized music festivals, such as the Hillside Summer Festival and the Guelph Jazz Festival. With all the amenities of a big city, coupled with a small-town feel, you will find a campus and city that offer you a perfect balance of academics and community.

How to apply

All applicants can begin their applications in early October 2015. The online form is available at ouac.on.ca.

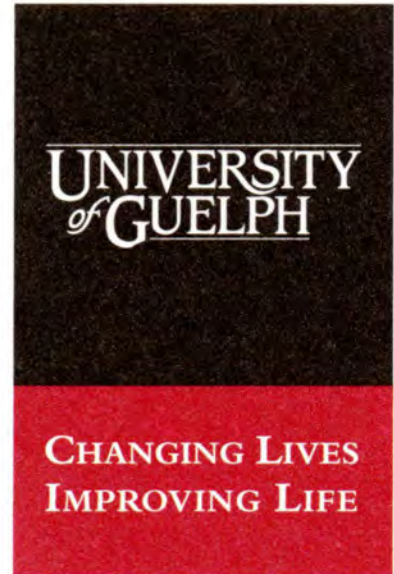
Canadian high school students are encouraged to apply by January 13, 2016 in order to be considered for all rounds of admission. Transfer and international students should visit uoguelph.ca for specific application deadlines.

**Please note: Residence is guaranteed for all first-year students provided they apply and submit their deposit by the June 1, 2016 deadline.*

Come visit us—book a tour

For more information about the University of Guelph, contact:

Admission Services
519.824.4120 ext. 58721
admission.uoguelph.ca
admission@registrar.uoguelph.ca



Admission Information



I am currently enrolled in an Ontario high school

> HIGH SCHOOL APPLICANT

Apply online: ouac.on.ca (Ontario Universities' Application Centre website) using the 101 form.

Deadline: January 13, 2016.

Choose your program: University of Guelph-Humber programs are listed under the University of Guelph section of the OUAC application.

Rank: Applying to more than one program at the University of Guelph-Humber? Rank your preferences on the application. You will only be considered for admission to the highest ranked program. If you want to reorder your program rankings, please amend your application on the OUAC website.

Requirements: Ontario Secondary School Diploma (OSSD) and your top six 4U/M courses, including the subject requirements noted in the chart.

English language requirements: You will be required to provide proof of English proficiency if English is not your first language and you have studied less than four years in an English language school (minimum high school level). Please refer to the "International Applicant" section, page 42, for more information.

Grade submission: Currently enrolled full-time in an Ontario high school? Your grades will automatically be submitted by your high school.

Repeated courses: The University will use the highest grade reported from a Ministry-approved institution for any repeated courses.

Have you been away from high school for seven months or more?

Please apply using the 105D form by May 1, 2016. You must meet high school student admission requirements and will be required to submit your official high school transcripts in addition to an activities form that details your activities during your time off, including any high school upgrading. Please submit these documents to Admission Services by June 1, 2016.

Advanced Placement and International Baccalaureate: Please see respective sections on page 43.

Ontario application codes and subject requirements

Program and OUAC Code	Subject Requirements	Minimum Admission Range
Business (GDB)	> ENG4U > any 4U math > four additional 4U/M courses	75%-80%
Early Childhood Studies (GHE)	> ENG4U > five additional 4U/M courses	75%-80%
Family and Community Social Services (GHF)	> ENG4U > five additional 4U/M courses	75%-80%
Justice Studies (GMP)	> ENG4U > five additional 4U/M courses	75%-80%
Kinesiology (GHK)	> ENG4U > any 4U math > any two from SBI4U, SCH4U, SPH4U or PSE4U > two additional 4U/M courses	75%-80%
Media Studies (GMT)	> ENG4U > five additional 4U/M courses	75%-80%
Psychology (GMA)	> ENG4U > five additional 4U/M courses	75%-80%

Please note: (a) The non-academic component of 4U/M Co-op courses is not considered for admission requirements. (b) Courses valued at 1.5 credits or greater will be considered equivalent to one credit. (c) The University will only accept Ontario Ministry of Education approved courses.

Timing of offers

Date	Basis of Calculation
February	Top six completed 4U/M (or equivalent courses), including subject requirements. Where six 4U/M courses are not available, completed 3U/M courses, including subject requirements, will be used.
April	Semestered Schools: Top six completed 4U/M (or equivalent courses), including subject requirements. Where six 4U/M courses are not available completed 3U/M courses, including subject requirements, will be used. Non-Semestered Schools: Top six completed or in-progress 4U/M courses.
Mid-May	Top six completed or in-progress 4U/M courses, including subject requirements.

Please note: If you do not receive an offer of admission in the first round of offers sent, there remains the opportunity for you to receive an offer in subsequent rounds.

High School Student Profile: This is your opportunity to tell us about factors beyond your control that may have impacted your grades. If your admission average is between 70-74.9% submitting a Student Profile is required to be considered for admission. For more information, please visit guelphhumber.ca/futurestudents. Submit online by May 1, 2016.

Accepting your offer

Students who are offered admission will receive an email and offer package. If you wish to accept your offer, do so online at ouac.on.ca by June 1, 2016. You can track your application at ouac.on.ca.

Please see page 48 for a complete list of important dates.

I am applying from another province within Canada

OUT OF PROVINCE HIGH SCHOOL APPLICANT

Apply online: ouac.on.ca (Ontario Universities' Application Centre website) using the 105D form.

Deadline: January 13, 2016.

Choose your program: University of Guelph-Humber programs are listed under the University of Guelph section of the OUAC application.

Rank: Applying to more than one program at the University of Guelph-Humber? Rank your preferences on the application. You will only be considered for admission to the highest ranked program. If you want to reorder your program rankings, please amend your application on the OUAC website.

Transcripts: You should arrange to have your most current grade results sent to Admission Services by April 15, 2016. Documentation must be submitted in a sealed envelope from the originating institution.

Applicants from BC: Please have your school forward an official transcript of your final semester mid-term marks in time to receive an offer.

Admission and subject requirements

To be considered for admission, high school applicants must have a minimum admission average of 75-80%, including subject requirements.

Applicants must have a high school diploma with the following provincial requirements:

British Columbia - Four acceptable academic grade 12 courses, inclusive of subject requirements.

Alberta - Five 30 or 31 level courses, inclusive of subject requirements.

Manitoba - Five full courses at senior level 4, with a minimum of three 40S courses, inclusive of subject requirements.

Program and OUAC Code	British Columbia	Alberta	Manitoba
Business (GDB)	> English 12 > Pre-Calculus 12, Calculus 12 or Principles of Math 12	> English 30-1 > Math 30 or Math 31	> English Language Arts 40S > one from Pre-Calculus Math 40S, Calculus 45A or Applied Mathematics 40S
Early Childhood Studies (GHE)	> English 12	> English 30-1	> English Language Arts 40S
Family and Community Social Services (GHF)	> English 12	> English 30-1	> English Language Arts 40S
Justice Studies (GMP)	> English 12	> English 30-1	> English Language Arts 40S
Kinesiology (GHK)	> English 12 > Pre-Calculus 12, Calculus 12 or Principles of Math 12 > two from Biology 12, Chemistry 12 or Physics 12	> English 30-1 > Math 30 or Math 31 > two courses from Biology 30, Chemistry 30 or Physics 30	> English Language Arts 40S > one from Pre-Calculus Math 40S, Calculus 45A or Applied Mathematics 40S > two courses from Biology 40S, Chemistry 40S or Physics 40S
Media Studies (GMT)	> English 12	> English 30-1	> English Language Arts 40S
Psychology (GMA)	> English 12	> English 30-1	> English Language Arts 40S

Please visit guelphhumber.ca/futurestudents for a complete listing of provincial admission requirements.

Repeated courses: The University will use the highest grade reported from a Ministry-approved institution for any repeated courses.

English language requirements: You will be required to provide proof of English proficiency if English is not your first language and you have studied less than four years in an English language school (minimum high school level). Please refer to the "International Applicant" section, page 42, for more information.

Advanced Placement and International Baccalaureate: Please see respective sections on page 43.

High School Student Profile: This is your opportunity to tell us about factors beyond your control that may have impacted your grades. If your admission average is between 70-74.9% submitting a Student Profile is required to be considered for admission. For more information, please visit guelphhumber.ca/futurestudents. Submit online by May 1, 2016.

Tracking your application

Once we've received your application, we will email and mail you your login and password to WebAdvisor. This account allows you to track your application status and lists all the documents required.

Accepting your offer

Students who are offered admission will receive an email and an offer package in the mail. To accept an offer, you must do so online at ouac.on.ca by June 1, 2016.

I am attending postsecondary for the first time and I am over 21 years of age

(and away from high school for at least two full years)

> MATURE APPLICANT

Apply online: ouac.on.ca (Ontario Universities' Application Centre website) using the 105D form.

Deadline: May 1, 2016.

Choose your program: University of Guelph-Humber programs are listed under the University of Guelph section of the OUAC application.

Rank: Applying to more than one program at the University of Guelph-Humber? Rank your preferences on the application. You will only be considered for admission to the highest ranked program. If you want to reorder your program rankings, please amend your application on the OUAC website.

Required documents: Submit all official high school transcripts by June 1, 2016 in addition to any other documents that may be requested. Documents must be submitted in a sealed envelope from the originating institution or requested from the OUAC.

You will be required to complete an activities form that details your activities following high school, including any high school upgrading.

Repeated courses: The University will use the highest grade reported from a Ministry-approved institution for any repeated courses.

English language requirements: You will be required to provide proof of English proficiency if English is not your first language and you have studied less than four years in an English language school (minimum high school level). Please refer to the "International Applicant" section, page 42, for more information.

Subject requirements

To be considered for admission, applicants must have a minimum admission average of 75-80%, including program-specific requirements.

Three 4U/M courses, including program-specific subject requirements, should be completed: see chart.

Ontario application codes and subject requirements

Program and OUAC Code	Subject Requirements
Business (GDB)	> ENG4U > any 4U math > one additional 4U/M course
Early Childhood Studies (GHE)	> ENG4U > two additional 4U/M courses
Family and Community Social Services (GHF)	> ENG4U > two additional 4U/M courses
Justice Studies (GMP)	> ENG4U > two additional 4U/M courses
Kinesiology (GHK)	> ENG4U > any 4U math > any two from SBI4U, SCH4U, SPH4U or PSE4U
Media Studies (GMT)	> ENG4U > two additional 4U/M courses
Psychology (GMA)	> ENG4U > two additional 4U/M courses

Please note: (a) The non-academic component of 4U/M Co-op courses is not considered for admission requirements. (b) Courses valued at 1.5 credits or greater will be considered equivalent to one credit. (c) The University will only accept Ontario Ministry of Education approved courses.

Mature and Transfer Student Profile: This is your opportunity to tell us about factors beyond your control that may have impacted your grades. If your admission average is between 70-74.9% submitting a Student Profile is required to be considered for admission. For more information, please visit guelphhumber.ca/futurestudents. Submit online by June 1, 2016.

Tracking your application

Once we've received your application, we will email and mail you your login and password to WebAdvisor. This account allows you to track your application status and lists all the documents required. You can expect to receive a decision as early as three weeks following the submission of all required documents.

Please see page 48 for a complete list of important dates.

I am applying from a country other than Canada

INTERNATIONAL APPLICANT

You are considered an international applicant if you are not a Canadian Citizen, Permanent Resident or Protected Person, and you have attended high school or postsecondary school inside or outside of Canada.

Apply online: ouac.on.ca (Ontario Universities' Application Centre website) using the 105F form.

Deadline: March 1, 2016.

Choose your program: University of Guelph-Humber programs are listed under the University of Guelph section of the OUAC application.

Rank: Applying to more than one program at the University of Guelph-Humber? Rank your preferences on the application. You will only be considered for admission to the highest ranked program. If you want to reorder your program rankings, please amend your application on the OUAC website.

Transcripts and required documents: Official high school and college/university transcripts should be sent directly to the University of Guelph-Humber from the originating institution in a sealed envelope.

International applications are individually assessed on country-specific data. Country-specific admission requirements can be found at guelphhumber.ca/futurestudents.

You should include among your senior level courses specific subject requirements at the advanced level that are required for admission to the degree program of your choice. Fulfilling minimum requirements does not guarantee entry.

Students meeting the minimum requirements will be considered for admission on an ongoing basis as soon as all required documentation has been received. The document deadline is March 1, 2016.

English language requirements: You will be required to provide proof of English proficiency if English is not your first language and you have studied less than four years in an English language school (minimum high school level). Successful completion of the University of Guelph's Open Learning and Education Support advanced level of the English Language Certificate Program is considered an acceptable form of testing for English proficiency. Proof of English proficiency must be provided with your required documents.

Exam	Admission Requirements
CAEL	Minimum 70
IELTS	6.5, no band less than 6
MELAB	85 (Composition score of 83, Overall 3)
PTE	Minimum overall score 60 with no score less than 60 in the individual components
TOEFL	Paper 600; Computer 250; TWE 5; Internet 89 (no scaled score less than 21)

Tracking your application

Once we've received your application, we will email and mail you your login and password to WebAdvisor. This account allows you to track your application status and lists all the documents required. You can expect to receive a decision as early as three weeks following the submission of all required documents.



Other Curriculum

Advanced Placement (AP)

Advanced Placement exam results of four or more may qualify for university credit to a maximum of 2.0 credits (four courses). Official transcripts are required.

International Baccalaureate (IB)

Ontario high school students registered in an IB program will automatically have their IB courses converted into Ontario U- and M-level equivalents. If you are applying with an IB diploma, you require a minimum score of 24 with six subjects: three higher level and three standard level, including subject-specific requirements for the program to which you are applying. If you are currently enrolled in IB, submit your predicted IB final results. Transfer credit may be given for higher level courses with grades of five or better.

Document Submission

Admission Services

For questions and to submit your documents, please contact us at:

416.798.1331 ext. 6056

info@guelphhumber.ca

University of Guelph-Humber

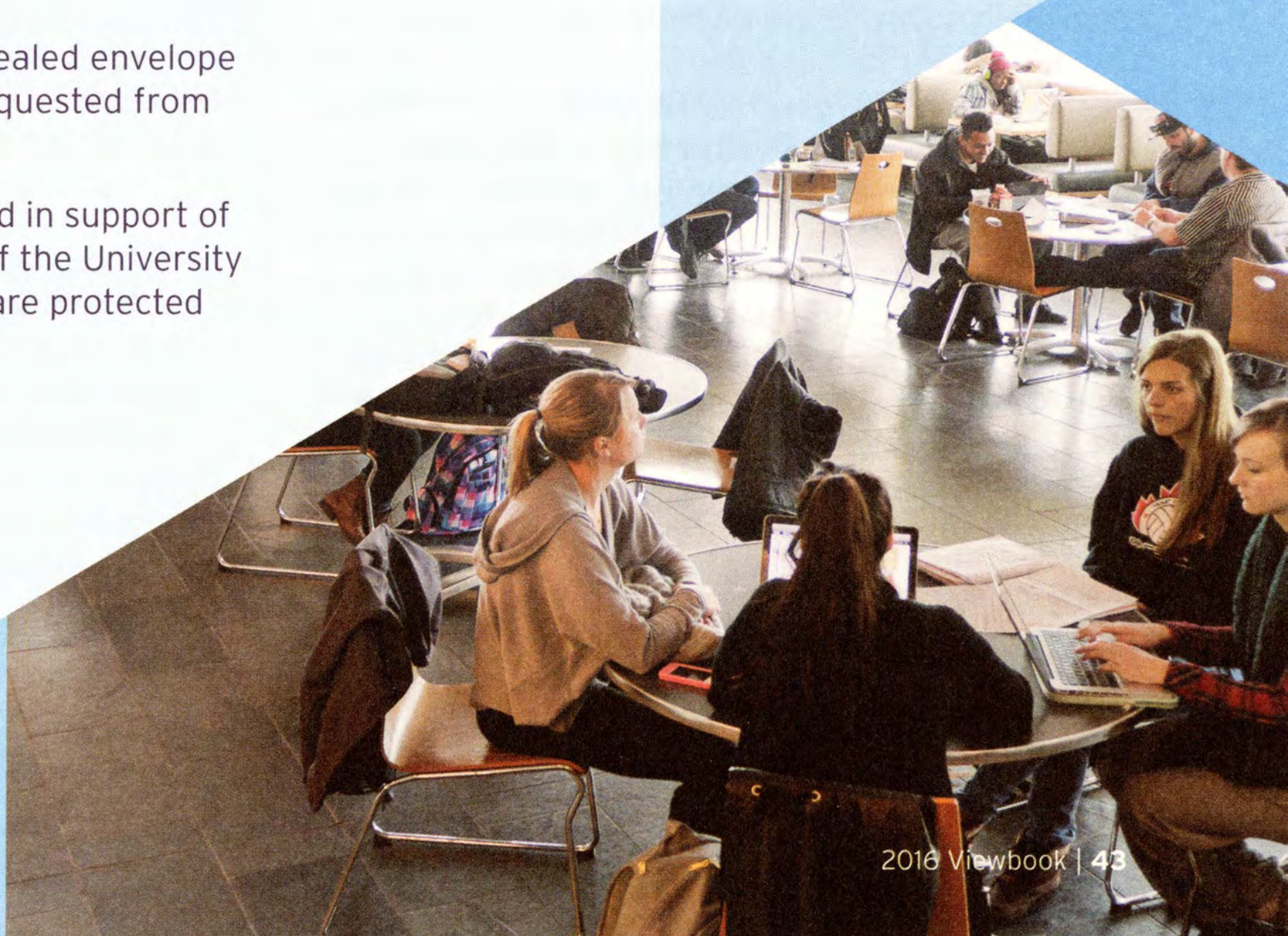
Admission Services, GH103

207 Humber College Blvd

Toronto, ON M9W 5L7

Documents must be submitted in a sealed envelope from the originating institution or requested from the OUAC when applicable.

Please note that documents submitted in support of an application become the property of the University and will not be returned. Documents are protected under provincial privacy legislation.



I am applying from or have attended another college or university

Whether you are looking for a change, have been working or want to upgrade your credentials, we value the contributions you bring to the classroom.

We welcome transfer students into all of our programs, striving to make each program accessible to students with diverse academic backgrounds.

> TRANSFER APPLICANT

Transfer students fall into one of three categories:

- Transferring from a diploma program that has been deemed “high-affinity”
- Transferring from any other diploma program
- Transferring from a university program

Each category has the same application deadline(s), fees and potential for awards and scholarships.

College High-Affinity Transfer Applicants

High-affinity diplomas

A high-affinity college diploma program is one that has been determined to have academic alignment with a University of Guelph-Humber program and has met the specific subject area requirements expected from the high school curriculum. Diplomas must be granted by a recognized institution. Students transferring from high-affinity diploma programs are eligible to receive a block of pre-determined transfer credit based on successful diploma completion.

Admission average

Students transferring from a high-affinity diploma program (see chart) may be considered for admission based on a minimum cumulative average of 75% upon completion of the diploma. If your cumulative admission average is between 70-74.9% you may be considered for admission with the submission of a Mature and Transfer Student Profile. Possession of the minimum requirements for entry does not guarantee admission.

Program and OUAC Code	High-Affinity Diplomas
Business (GDB)	Diploma in Accounting; Business Administration; Finance; Management; or Marketing
Early Childhood Studies (GHE)	Diploma in Early Childhood Education
Family and Community Social Services (GHF)	Child and Youth Worker; Developmental Services Worker; or Social Service Worker diplomas
Justice Studies (GMP)	Diploma in Community and Justice Services; Law and Security Administration; Police Foundations; or Protection, Security and Investigation
Kinesiology (GHK)	Diploma in Fitness and Health Promotion; Fitness and Lifestyle Management; or Health, Wellness and Fitness
Media Studies (GMT)	Diploma in Digital Communications; Image Arts/Photography; Journalism; Media Communications or Public Relations
Psychology (GMA)	Diploma in General Arts and Science; diplomas listed above for Business, Early Childhood Studies, Family and Community Social Services, and Justice Studies may be considered high-affinity

Transfer credit assessment

If you are transferring from a high-affinity diploma program you may be eligible to receive the following transfer credits:

Up to **5.0 credits** granted for a completed two-year recognized diploma with a minimum cumulative average of 75%. Equivalent to approximately 10 courses.

Up to **10.0 credits** granted for a completed three-year recognized diploma with a minimum cumulative average of 75%. Equivalent to approximately 20 courses.

An official transfer credit assessment will be included with your offer of admission.

Please note: Your transfer credit will be assessed upon admission to the University of Guelph-Humber. Credit will not be granted for college certificates, incomplete diplomas or if less than two years of a college diploma program has been completed.

Vulnerable sector screening

Depending on your transfer credit assessment, the placement/internship component of your program can begin as early as your first semester at the University. You may be required to complete a Vulnerable Sector Screening before your placement/internship begins. Please visit guelphhumber.ca/placements for additional details.

University or College Non High-Affinity Transfer Applicants

Students who have completed coursework or programs at university or other (non high-affinity) college programs may be eligible to receive transfer credit for similar or applicable coursework.

Admission average

University applicants must have a minimum cumulative average of 70% for consideration. College transfer applicants must have a minimum cumulative average of 75% to be considered for admission. If your cumulative admission average is between 70-74.9% you may be considered for admission with the submission of a Mature and Transfer Student Profile. Possession of the minimum requirements for entry does not guarantee admission.

Subject requirements

Below is a list of high school subject requirements per program. You may have completed the equivalent of these subject requirements through college or university coursework, which will be determined through evaluating course syllabi once you apply.

Program and OUAC Code	Subject Requirements
Business (GDB)	> ENG4U > any 4U math
Early Childhood Studies (GHE)	> ENG4U
Family and Community Social Services (GHF)	> ENG4U
Justice Studies (GMP)	> ENG4U
Kinesiology (GHK)	> ENG4U > any 4U math > any two from SBI4U, SCH4U, SPH4U or PSE4U
Media Studies (GMT)	> ENG4U
Psychology (GMA)	> ENG4U

Transfer credit assessment

Your completed postsecondary coursework will be assessed for relevance and credit awarded where applicable. Transcripts in addition to course syllabi and other supporting documents will be evaluated at the time of admission to determine potential transfer credit. An official transfer credit assessment will be included with your offer of admission.

Vulnerable sector screening

Depending on your transfer credit assessment, the placement/internship component of your program can begin as early as your first semester at the University. You may be required to complete a Vulnerable Sector Screening before your placement/internship begins. Please visit guelphhumber.ca/placements for additional details.

How to Apply

Apply online: ouac.on.ca (Ontario Universities' Application Centre website) using the 105D form.

Deadline: Deadlines are dependent on your entry date. Please refer to the "Important deadlines" section, page 47.

Choose your program and entry point: University of Guelph-Humber programs are listed under the University of Guelph section of the OUAC application. Please note: You will only be admitted to the entry point for which you have applied. Your start date cannot be deferred. If you wish to be considered for a different entry point you will be required to change your OUAC application or re-apply through the OUAC.

Winter (January) entry

Business

Are you transferring from a completed high-affinity business diploma program? If so, then you are eligible to get started on your business degree in winter 2016. A select number of courses will be available in the winter semester. Note: Commencing studies in January does not guarantee faster program completion.

Summer (May) bridge entry

Early Childhood Studies

Are you transferring from an early childhood education high-affinity diploma program? If so, then you are eligible for May entry to Early Childhood Studies. The May to August semester is considered a "bridging semester", which allows you to fast-track your degree.

Family and Community Social Services

Are you transferring from a Social Service Worker diploma program? If so, then you are eligible for May entry to Family and Community Social Services. You must complete a pre-admission university course to be eligible for May admission. The May to August semester is considered a "bridging semester", which allows you to fast-track your degree.

Kinesiology

Are you transferring from a kinesiology high-affinity diploma program? If so, then you are eligible for May entry to Kinesiology. The May to August semester is considered a "bridging semester" to semester five of the Kinesiology program in September. Applications for September entry are not recommended due to limited space availability.

Fall (September) entry

September entry for transfer students is available **for all programs**.

Rank: Applying to more than one program at the University of Guelph-Humber? Rank your preferences on the application. If you want to reorder your program rankings, please amend your application on the OUAC website.

Required documents: Submit any and all official transcripts from high school and postsecondary institution(s) attended by the respective deadline under "Important deadlines" on page 47, in addition to any other documentation that may be requested.

Once all documents have been received your application will be reviewed for admission. You are encouraged to apply and submit all documentation as soon as possible. Postsecondary students currently enrolled in studies are encouraged to send interim grades. Due to space limitations within programs, admission consideration cannot be guaranteed for applications and documents that are received after the deadline dates. Should you choose to re-apply for a future entry point you will be required to re-submit your documents.

Please note: Documents submitted in support of an application become the property of the University and will not be returned. Documents are protected under provincial privacy legislation.

Official Ontario college and university transcripts can be requested online through the OUAC. A service fee does apply. You may also be required to request the originating institution(s) send your official transcripts in a sealed envelope directly to the University at the address provided.

Send documents to:

University of Guelph-Humber
Admission Services, GH103
207 Humber College Blvd
Toronto, ON M9W 5L7

Document checklist

- Official high school transcripts
- Official transcripts from all postsecondary institutions attended
- Detailed course syllabi (for students applying from non high-affinity diploma and university programs)
- English proficiency results (if required) please see guelphhumber.ca/futurestudents for more information
- Activities form (if required)
- Mature and Transfer Student Profile (if required)

English language requirements: You will be required to provide proof of English proficiency if English is not your first language and you have studied less than four years in an English language school (minimum high school level). Please visit guelphhumber.ca/futurestudents for more information.

Assessment fee: In order to assess your application, you are required to submit a non-refundable \$70 assessment fee to the OUAC. If you are currently attending full-time studies in the final year of a Canadian high school or CEGEP and have not previously attended a postsecondary institution this fee does not apply. More details can be found at ouac.on.ca.

Mature and Transfer Student Profile: This is your opportunity to tell us about factors beyond your control that may have impacted your grades. If you anticipate your cumulative average will be within the 70-74.9% range, it is essential that you complete the Student Profile. Submit online by the document deadline for your entry point, see "Important deadlines", right. For more information, please visit guelphhumber.ca/futurestudents.

Tracking your application

Once we've received your application, we will email and mail you your login and password to WebAdvisor. This account allows you to track your application status and lists all the documents required. You can expect to receive a decision as early as three weeks following the submission of all required official documents.

Important deadlines

Winter (January) entry

November 15, 2015: Application deadline. Apply online at ouac.on.ca.

December 1, 2015: Document deadline. Send in all official transcripts (high school and postsecondary) and any other documents requested.

Summer (May) bridge entry

February 1, 2016: Application deadline. Apply online at ouac.on.ca.

March 1, 2016: Document deadline. Send in all official transcripts (high school and postsecondary) and any other documents requested.

Fall (September) entry

May 1, 2016: Application deadline. Apply online at ouac.on.ca.

June 1, 2016: Document deadline. Send in all official transcripts (high school and postsecondary) and any other documents requested.

Please see page 48 of the Viewbook for a complete list of important dates.

Important Dates: Mark Your Calendar!

High School Applicants

January 13, 2016

Application deadline for September 2016.

February 2016

Offers of admission begin to be made to high school students with high academic standing who qualify based on available grade data.

February 5, 2016

Recommended last day to submit changes or additional choices to an application through the OUAC.

February 28, 2016

Deadline to apply to the Founders' Academic Merit Scholarship.

April 2016

Second round of offers will be made to high school students who qualify based on available grade data.

April 15, 2016

Registrar's Need-Based Bursary application deadline.

Transcripts due for Canadian applicants outside of Ontario.

May 2016

All remaining offers of admission will be made.

May 1, 2016

Application deadline for applicants who have been out of high school for seven months or more.

May 27, 2016

All high school applicants will receive an admission decision.

June 1, 2016

Last day for high school students to accept an offer of admission on ouac.on.ca.

Deadline for residence applications.

Document deadline for applicants who have been out of high school for seven months or more.

Transfer, Mature and International Applicants

November 15, 2015

Transfer student application deadline for winter (January) 2016 entry.

December 1, 2015

Document deadline for transfer students applying for winter (January) 2016 entry.

February 1, 2016

Transfer student application deadline for summer (May) 2016 entry.

March 1, 2016

Document deadline for transfer students applying for summer (May) 2016 entry.

International student application and document deadline for fall (September) 2016 entry.

May 1, 2016

Application deadline for mature and transfer students applying for fall (September) 2016 entry to all programs.

June 1, 2016

Document deadline for mature and transfer students applying for fall (September) 2016 entry to all programs.

Deadline for residence applications for fall (September) entry.

Note: Beginning in December, mature, transfer and international student applications are reviewed on an ongoing basis. Applicants can expect to receive a decision as early as three weeks following the submission of all required documents.

Visit Us

Get a feel for what life will be like as a University of Guelph-Humber student!

On-campus events

Fall Information Day

November 15, 2015

Program Preview Day: Business and Media Studies

March 6, 2016

March Break Tours

March 14-18, 2016

Program Preview Day: Applied Sciences

April 3, 2016

Next Steps

May 19 & May 26, 2016

Campus tours

Tours of campus, led by current students, are available throughout the year. Book a tour online at guelphhumber.ca/futurestudents.

Doing Our Part

The University of Guelph-Humber saved the following resources by printing the 2016 Viewbook on paper from responsible sources made with 10% post-consumer waste.

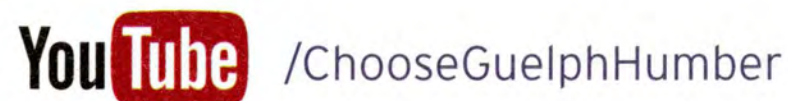
Environmental impact estimates were calculated using the Environmental Paper Network Paper Calculator Version 3.2. For more information visit www.papercalculator.org.

FSC® is not responsible for any calculations on saving resources by choosing this paper.

Questions? Contact us

416.798.1331 ext. 6056
guelphhumber.ca/futurestudents
info@guelphhumber.ca

FIND US ON:



FSC® supports responsible forest management worldwide Rainforest Alliance works to conserve biodiversity and sustainable livelihoods

Say Cheese!

We are proud to have students as part of our team. In 2014-15 we had the following people contribute to photography for publications like this one.



Jillian Fernandes Student Photographer

Jillian is a fourth-year digital communications Media Studies student. She is combining her passion for photography with design as a graphic designer.



Christina Tanel Student Photographer

Christina is a fourth-year image arts Media Studies student. Her passion to create is what inspires her work and keeps her looking to learn and grow in this field.

UNIVERSITY OF
GUELPH
HUMBER

416.798.1331 | info@guelphhumber.ca
guelphhumber.ca/futurestudents

FIND US ON:



The University of Guelph-Humber makes every effort to ensure the information contained herein is as current and accurate as possible. The University reserves the right to make changes to policies, programs and services described in this publication without prior notice.